

Product datasheet for **MG205809**

Cyp2j13 (BC016446) Mouse Tagged ORF Clone

Product data:

Product Type:	Expression Plasmids
Product Name:	Cyp2j13 (BC016446) Mouse Tagged ORF Clone
Tag:	TurboGFP
Symbol:	Cyp2j13
Mammalian Cell Selection:	Neomycin
Vector:	pCMV6-AC-GFP (PS100010)
E. coli Selection:	Ampicillin (100 ug/mL)
ORF Nucleotide Sequence:	>MG205809 representing BC016446 Red=Cloning site Blue=ORF Green=Tags(s)

TTTTGTAATACGACTCACTATAGGGCGGCCGGGAATTCGTCGACTGGATCCGGTACCGAGGAGATCTGCC
GCC**CGATCGCC**

ATGCTCGAAGCCGCGGACTCCCTGGCAGCTGCCTTCTGGGCAGCTCTCCATCTCCGGACTCTGCTGCTAG
CTGCTGTACACCTTCCTTTTTCTGGCTGACTACCTCAAAGCCGGCGCCCAAGAAGTACCCGCCAAGGCC
GCCGCGTTGCCCTTTGTGGGCAACTCGTTCAGATGGACTTGACGCAGTCGCATCTGGCAGTTCAGAAG
TTTGTGAAGAAGTATGGGAATGTTATCAGTCTTGATTTTCGGAATCAAGTCTGCAGTCATTATAAGCAGCC
TGCCTTTAATCAAAGAAGCCTTTTCTCACCTGGATGAAAACCTTTATAAATCGCCGTATATTTCCCTTACA
AAGACAGATCTTTAATGGAAATGGATTGATCTTCTCCAGTGGCCAGACATGGAAGGAACAAAGGAGGTTT
GCCCTGATGACTGAGGAACTTTGGACTGGGAAAGAAGAGCTTAGAGCATCGAATTCAGGAGGAGGCCCT
CCCACCTGGTGGAGGCTATAGGGGAAGAGGAAGGACAGCCTTTTGATCCTCACTTCAAGTCTACAGTGC
AGTTTCCAATATCATTGCTCCATCACCTTTGGGGAACGGTTTGAGTACCATGACAGTCAGTTTCAGGAG
CTGCTGCAGTTACTGGATAAAGCCATGTACTGGGTACCACCTCCCTAATGGTCCATTACCCAGGCAAGA
CTACTACAAGTTTCAATGAAGAAAACCTTATCTGCAGCACTCTGGACCTTCTCCTTGCTGGAACAGAGAC
AACATCCTCAACTACGATGGGCTCTGCTCTACATGGCCCTATACCCAGAAGTCCAAGAAAATGTACAG
GCTGAAATTGACCGAGTGATTGGCCAGTCGAAGCATCCCAGCCTGGCTGACAGAGACTCCATGCCCTACA
CCAATGCTGTTGTCATGAAATCTGAGAATGGGCAATAGTGTCCCTCTGAATATCCCAGGGAAGTGGC
AGTTGACACTACACTGGCTGGATTTCACTTGCCAAAGGAAAGCGAGCTTGCCCTCGGAGAACAATTGGCCA
GGTTTGAGCTCTTTATTTTTTCACTGCCTTGTGCAAAAATTTACCTTCAAGCCCCAGCCAATGAGAA
CC

ACGCGTACGCGGCCGCTCGAG - GFP Tag - GTTTAA



[View online »](#)

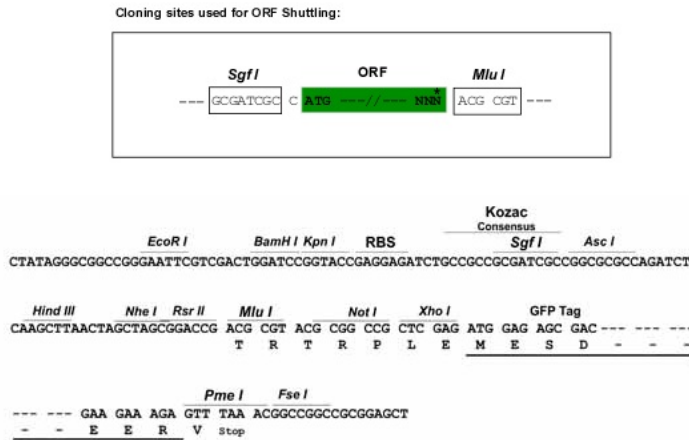
Protein Sequence: >MG205809 representing BC016446
Red=Cloning site Green=Tags(s)

MLEAADSLAAAFWAALHLRLLLLAAVTFLFLADYLKSRPKNYPPRPPRLPFVGNFQMDLTQSHLAVQK
 FVKYGNVISLDFGIKSAVIISLPLIKEAFSHLDENFINRRIFFLQRQIFNGNGLIFSSGQTWKEQRRF
 ALMTRLNFGGLKKSLEHRIQEEASHLVEAIGEEEGQPFDPHFKIYSAVSNIICSITFGERFEYHDSQFQE
 LLQLLDKAMYLGTTSLMVHYPGKTTTSFNEENLICSTLDLFLAGTETTSSTLRWALLYMALYPEVQENVQ
 AEIDRVIGQSKHPSLADRDSMPYTNNAVVHEILRMGNSVPLNIPREYAVDRTL LAGFHLPKSESELASENNWP
 GLSSLFFSLPLCKNLPSPPQMRT

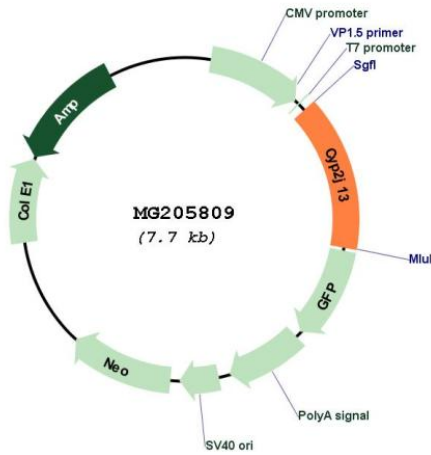
TRTRPLE - GFP Tag - V

Restriction Sites: SgfI-MluI

Cloning Scheme:



Plasmid Map:



ACCN: BC016446

ORF Size:	1124 bp
OTI Disclaimer:	The molecular sequence of this clone aligns with the gene accession number as a point of reference only. However, individual transcript sequences of the same gene can differ through naturally occurring variations (e.g. polymorphisms), each with its own valid existence. This clone is substantially in agreement with the reference, but a complete review of all prevailing variants is recommended prior to use. More info
OTI Annotation:	This clone was engineered to express the complete ORF with an expression tag. Expression varies depending on the nature of the gene.
Components:	The ORF clone is ion-exchange column purified and shipped in a 2D barcoded Matrix tube containing 10ug of transfection-ready, dried plasmid DNA (reconstitute with 100 ul of water).
Reconstitution Method:	<ol style="list-style-type: none"> 1. Centrifuge at 5,000xg for 5min. 2. Carefully open the tube and add 100ul of sterile water to dissolve the DNA. 3. Close the tube and incubate for 10 minutes at room temperature. 4. Briefly vortex the tube and then do a quick spin (less than 5000xg) to concentrate the liquid at the bottom. 5. Store the suspended plasmid at -20°C. The DNA is stable for at least one year from date of shipping when stored at -20°C.
RefSeq:	BC016446 , AAH16446
RefSeq Size:	1512 bp
RefSeq ORF:	1124 bp
Locus ID:	230459
Cytogenetics:	4 C5