

Product datasheet for **MG205773**

Lipt1 (NM_001037918) Mouse Tagged ORF Clone

Product data:

Product Type: Expression Plasmids
Product Name: Lipt1 (NM_001037918) Mouse Tagged ORF Clone
Tag: TurboGFP
Symbol: Lipt1
Synonyms: EG623661
Mammalian Cell Selection: Neomycin
Vector: pCMV6-AC-GFP (PS100010)
E. coli Selection: Ampicillin (100 ug/mL)
ORF Nucleotide Sequence: >MG205773 representing NM_001037918
 Red=Cloning site Blue=ORF Green=Tags(s)

TTTTGTAATACGACTCACTATAGGGCGCCGGGAATTCGTCGACTGGATCCGGTACCGAGGAGATCTGCC
 GCC**CGATCGCC**

ATGCTAATTCACCTTTCAATGAAGAATTGCTTCCGATTACTTTGTCAGCACAAGGTCCCAGCAGCTGGCT
 TAAAAGCCACCCACACATGGGCTCATTTACAGTCGATCTCCAATGATGTATATGAAATCTGGCTTT
 TGAAGACTGGATCCAGCACCACATACATCTAGAAGGCAAGCCGATTCTTTTCTTTGGAGAAATTCCT
 TCTGTCGTCATCGGCAGGCATCAGAATCCGTGGCAGGAATGTAACCTCCATCTGATGAGACAGGAAGGAA
 TCAAAGTGGCTCGGAGGAAGAGTGGAGGAGGAGCCGTGTACCACGACATGGTAACATCAACCTCACCTT
 CTTTACCACAAAACCAAGTATGACAGAATGAAAATCTGAAACTAATCGTGAGAGCTCTGAATGCTGTC
 CAACCCAGCTGGATGTGCAGCCTACAAAAAGTTTGACCTGCTACTCGACGGGCAGTTTAAATCTCAG
 GAACCGCATCAAAGATCGGCCGGACTGCCGCGTACCACCACTGCACCTTGCTATGCAGCACAACCGGAC
 AGCTCTGTCTTCTCGCTGAAGAGCCCGTACTGCGGGATAAAGAGCAACGCCACTCCCAGCATCCCTTCC
 GCTGTCAAAAACCTTCTGGAAAGAGATTCCACGCTGACCTGTGAAGTTCTGATGAGTGGGTGGCTGCAG
 AGTACGCGCGCATCATCAAGTTGATGGTCACGTCAACCTAATAAACCTGCAGATGAGACGATGTTCCC
 TGAATAAACCGCAAAGTCAAGGAAGTCAAAAGTTGGGAGTGGGTATACGGCAGGACTCCCAAGTTTACC
 GTGGACACCACGTTTCATGTGCCGATGAGCAGGCGCATTGGAAATCCAAGTGTTCATGGATGTAAGA
 ACGGACGAATCGAAACCTGCGCTATTAAGGCACCCGATCACTGGCTGCCGCTGGAATAGGTGAGAAATT
 AAAGTCAAGTTTCATCGGCAGCAAATTCGCCCGTTGAAACCACCTGTAACGAATGTATTACTGAGA
 ACATGTCCAGGCGACCATCACTTACACAGTAAATGGTACATTCTGTGTGAAAAAATCAGGGGGATAATG

ACGCGTACGCGGCCGCTCGAG - GFP Tag - GTTTAA



[View online »](#)

Protein Sequence: >MG205773 representing NM_001037918
 Red=Cloning site Green=Tags(s)

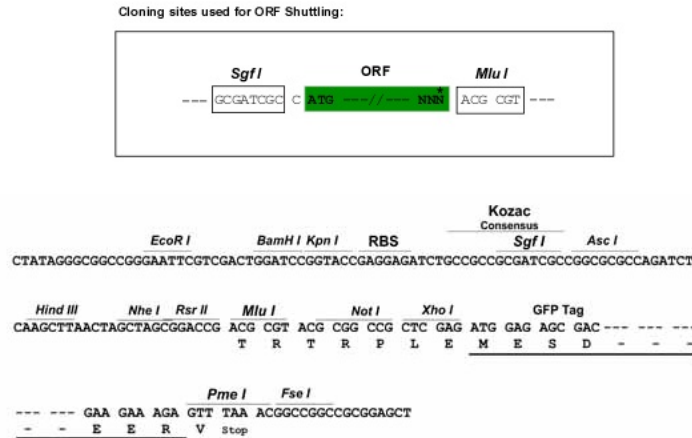
MLIPLSMKNCFRLLCQHKVPAAGFKSPPTHGLILQSSISNDVYENLAFEDWIHDHIIHLEGKPIFLWRNSP
 SVVIGRHQNPWQECNLHLMRQEGIKLARRKSGGGAVYHDMGNINLTFFTTKKYDRMENLKLIVRALNAV
 QPQLDVQPTKKFDLLLDGQFKISGTASKIGRTAAYHHCTLLCSTNRTALSSSLKSPYCGIKSNATPSIPS
 AVKNLLERDSTLTCEVLMSAVAAEYAAHHQVDGHVNLINPADETMFPGINRKVKELQSWEWVYGRTPKFT
 VDTTFHVPYEQAHLEIQVFMVDKNGRIETCAIKAPDHWLPLEIGEKLNSFFIGSKFCPVETLLTNVLLR
 TCPGDHHLHSKWYILCEKIRGIM

TRTRPLE - GFP Tag - V

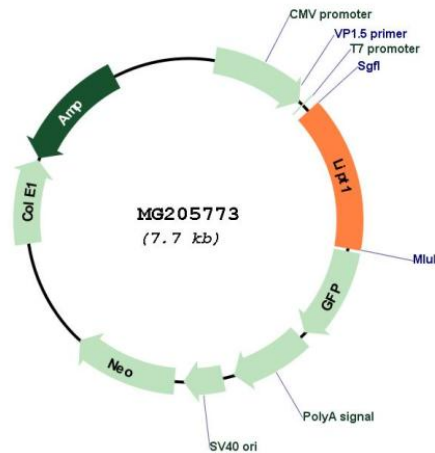
Restriction Sites:

SgfI-MluI

Cloning Scheme:



Plasmid Map:



ACCN:

NM_001037918

ORF Size:	1119 bp
OTI Disclaimer:	The molecular sequence of this clone aligns with the gene accession number as a point of reference only. However, individual transcript sequences of the same gene can differ through naturally occurring variations (e.g. polymorphisms), each with its own valid existence. This clone is substantially in agreement with the reference, but a complete review of all prevailing variants is recommended prior to use. More info
OTI Annotation:	This clone was engineered to express the complete ORF with an expression tag. Expression varies depending on the nature of the gene.
Components:	The ORF clone is ion-exchange column purified and shipped in a 2D barcoded Matrix tube containing 10ug of transfection-ready, dried plasmid DNA (reconstitute with 100 ul of water).
Reconstitution Method:	<ol style="list-style-type: none">1. Centrifuge at 5,000xg for 5min.2. Carefully open the tube and add 100ul of sterile water to dissolve the DNA.3. Close the tube and incubate for 10 minutes at room temperature.4. Briefly vortex the tube and then do a quick spin (less than 5000xg) to concentrate the liquid at the bottom.5. Store the suspended plasmid at -20°C. The DNA is stable for at least one year from date of shipping when stored at -20°C.
RefSeq:	NM_001037918.4
RefSeq Size:	2645 bp
RefSeq ORF:	1122 bp
Locus ID:	623661
UniProt ID:	Q8VCM4
Cytogenetics:	1 B
Gene Summary:	Catalyzes the transfer of the lipoyl group from lipoyl-AMP to the specific lysine residue of lipoyl domains of lipoate-dependent enzymes.[UniProtKB/Swiss-Prot Function]