

Product datasheet for **MG205644**

Pcyt1a (NM_009981) Mouse Tagged ORF Clone

Product data:

Product Type: Expression Plasmids
Product Name: Pcyt1a (NM_009981) Mouse Tagged ORF Clone
Tag: TurboGFP
Symbol: Pcyt1a
Synonyms: Cctalpha; CTalpha; Ctpct; Ctalpha
Mammalian Cell Selection: Neomycin
Vector: pCMV6-AC-GFP (PS100010)
E. coli Selection: Ampicillin (100 ug/mL)
ORF Nucleotide Sequence: >MG205644 representing NM_009981
 Red=Cloning site Blue=ORF Green=Tags(s)

TTTTGTAATACGACTCACTATAGGGCGCCGGGAATTCGTCGACTGGATCCGGTACCGAGGAGATCTGCC
 GCC**CGATCGCC**

ATGGATGCACAGAGTTCAGCTAAAGTCAATTCGAGGAAGAGGAGGAAAGAGGCACCTGGCCCTAATGGAG
 CAACAGAGGAAGATGGAATTCCTTCCAAAGTGCAGCGTTGCGCAGTTGGTTTACGGCAGCCAGCTCCTTT
 TTCTGATGAAATTGAAGTTGACTTTAGTAAGCCCTATGTCAGGGTGACTATGGAAGAAGCCTGCAGGGGA
 ACTCCGTGTGAGCGGCCGTGAGAGTTTATGCGGATGGAATATTTGACTTGTTCCTACTCTGGTCATGCC
 GGGCTCTGATGCAAGCAAAGAACCTTTCCCTAATACGTATCTAATTGTGGGAGTCTGCAGTGATGAGCT
 AACGCACAACCTCAAGGGCTTCACTGTGATGAACGAGAATGAGCGCTATGACGCCGTGCAGCACTGCCGC
 TACGTGGACGAGGTGGTGCAGAACGCCCTGGACTCTGACGCCTGAGTTCTGGCAGAGCACCGGATTG
 ATTTTGTGCGCCATGACGACATCCCTATTCTTCTGCAGGGAGCGATGATGTGTATAAGCACATCAAGGA
 CGCAGGCATGTTTGTCCACACAGAGGACAGAAGGTATCTCCACATCAGACATCATCACCCGATTGTC
 CGTGACTATGATGTGTATGCAAGACGGAACCTACAGAGGGGTACACTGCCAAGGAGTCAATGTGACGT
 TTATCAACGAGAAGAAATACCACTTGAAGAACGAGTTGATAAAGTAAAGAAGAAAGTGAAGATGTGGA
 GAAAAAGTCAAAAGAGTTTGTGCAGAAGGTGGAAGAGAAGAGCATCGACCTCATCCAGAAGTGGGAGGAG
 AAGTCCCGAGAGTTCATTGGAAGTTTCTGAAATGTTTGGTCCAGAAGGAGCACTGAAGCACATGCTGA
 AGGAGGGAAAAGGTCGGATGCTGCAGGCCATCAGTCCCAAGCAGAGCCCAAGCAGCAGCCCTACTCATGA
 GCGCTCCCCCTCCCTCCTTTCCGGTGGCCCTTCTCTGGCAAGACTTCCCATCTTCTCCCCAGCAAGT
 CTTTCTAGGTGCAGGGCTGTGACCTGTGACATCAGCGAGGATGAAGAGGAC

ACCGTACGCGGCCGCTCGAG - GFP Tag - GTTTAA



[View online »](#)

Protein Sequence: >MG205644 representing NM_009981
 Red=Cloning site Green=Tags(s)

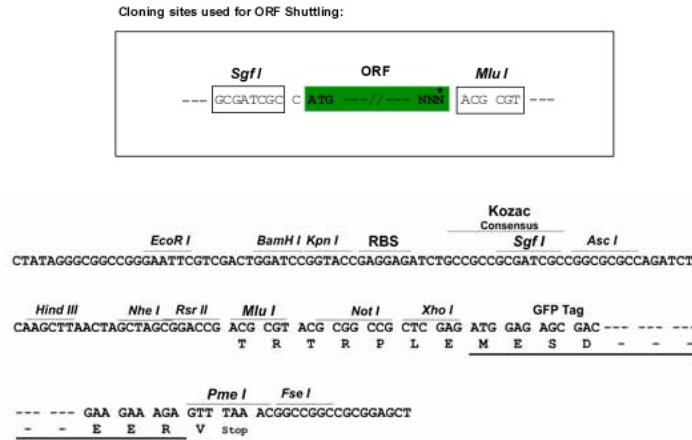
MDAQSSAKVNSRKRKEAPGPNGATEEDGIPSKVQRCVGLRQPAPFSDEIEVDFSKPYVVRTMEEACRG
 TPCERPVRVYADGIFDLFHSGHARALMQAKNLFNPTYLIVGVCSDELTHNFKGFTVMNENERYDAVQHC
 YVDEVVRNAPWTLTPEFLAEHRIDFVAHDDIPYSSAGSDDVYKHIKDAGMFAPQRTREGISTSDIITRIV
 RDYDVYARRNLQRGYTAKELNVSFINEKKYHLQERVVKVKKVKDVEEKSKFVQKVEEKSIDLIQKWE
 KSREFIGSFLEMFGPEGALKHMLKEGKGRMLQAI SPKQSPSSP THERSPSPSFRWPFSGKTS PSSSPAS
 LSRCAVTCDISDEED

TRTRPLE - GFP Tag - V

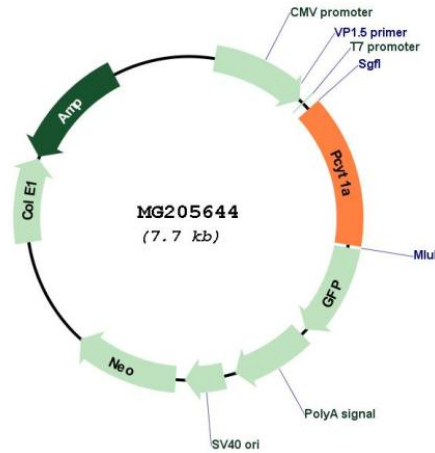
Restriction Sites:

SgfI-MluI

Cloning Scheme:



Plasmid Map:



ACCN:

NM_009981

ORF Size:	1101 bp
OTI Disclaimer:	The molecular sequence of this clone aligns with the gene accession number as a point of reference only. However, individual transcript sequences of the same gene can differ through naturally occurring variations (e.g. polymorphisms), each with its own valid existence. This clone is substantially in agreement with the reference, but a complete review of all prevailing variants is recommended prior to use. More info
OTI Annotation:	This clone was engineered to express the complete ORF with an expression tag. Expression varies depending on the nature of the gene.
Components:	The ORF clone is ion-exchange column purified and shipped in a 2D barcoded Matrix tube containing 10ug of transfection-ready, dried plasmid DNA (reconstitute with 100 ul of water).
Reconstitution Method:	<ol style="list-style-type: none">1. Centrifuge at 5,000xg for 5min.2. Carefully open the tube and add 100ul of sterile water to dissolve the DNA.3. Close the tube and incubate for 10 minutes at room temperature.4. Briefly vortex the tube and then do a quick spin (less than 5000xg) to concentrate the liquid at the bottom.5. Store the suspended plasmid at -20°C. The DNA is stable for at least one year from date of shipping when stored at -20°C.
RefSeq:	NM_009981.4
RefSeq Size:	1663 bp
RefSeq ORF:	1104 bp
Locus ID:	13026
UniProt ID:	P49586
Cytogenetics:	16 22.69 cM
Gene Summary:	Controls phosphatidylcholine synthesis.[UniProtKB/Swiss-Prot Function]