

Product datasheet for **MG205602**

Fibp (BC031716) Mouse Tagged ORF Clone

Product data:

Product Type:	Expression Plasmids
Product Name:	Fibp (BC031716) Mouse Tagged ORF Clone
Tag:	TurboGFP
Symbol:	Fibp
Synonyms:	2010004G08Rik; 2010005N21Rik; 3010027N18Rik
Mammalian Cell Selection:	Neomycin
Vector:	pCMV6-AC-GFP (PS100010)
E. coli Selection:	Ampicillin (100 ug/mL)
ORF Nucleotide Sequence:	>MG205602 representing BC031716 Red=Cloning site Blue=ORF Green=Tags(s)

TTTTGTAATACGACTCACTATAGGGCGGCCGGAATTCGTCGACTGGATCCGGTACCGAGGAGATCTGCC
GCC**CGATCGCC**

ATGACCAGCGAACTAGACATTTTCGTGGGGAACACGACCCTTATAGATGAAGACGTGTATCGCCTCTGGC
TGGATGGTTACTCAGTGAACGATGCAGTGGCTCTGCGAGTACGCTCCGGAATCTTGGAGCAGACGGGAGC
CACCACAGGAGTGTGCAGAGCGACACCATGGACCACTACCGCACCTTTCACATGCTTGAGCGTCTGCTG
CACGCGCCGCGAAGCTGTGCACCAGCTCATCTCCAGATTCCCTCCCGACAGACACTCCTCATCG
AGAGGTACTACACCTTTGATGAGGCCTTTGTTCCGGGAGGTCTTGGCAAGAAGCTGTCCAAGGGTACCAA
GAAAGACCTGGATGACATCAGCACCAAAACAGGAATTACTCTCAAGAGCTGCCGGAGGCAGTTTGACAAC
TTTAAACGAGTCTTCAAGGTGGTGAAGAAATGCGGGGCTCCCTGGTGGACAACATCCAGCAGCACTTCC
TCCTCTCTGACCGGCTAGCCAGGGATTACGCAGCCATCGTCTTTTTTGCCAAACCGCTTTGAAACAGG
AAAGAAAAGCTGCAGTACCTGAGCTTTGGGGACTTTGCCTTCTGTGCAGAGCTTATGATCCAGAAGCTGG
ACCCTTGGAGCCGTGGTGAGGCCCCCACTGACCCAGACTCTCAGGTGGACGACATGGATGTGGACTTAG
ATAAGGAGTTTCTCAAGACTTGAAGGAGCTCAAGTTCTCGTGGCTGACAAGGACCTCCTGGACCTGCA
TAAGAGCCTGGTGTCACTGCCCTCCGGGAAAGCTGGGTGTCTTCTCTGAGATGGAACCAACTCAAG
AATCTGTCTCGGGGCTGGTGAACGTGGCTGCCAAGCTGACCCACAATAAGGATGTCAGAGACCTATTTG
TGGACCTCGTGGAGAAGTTTGTGGAACCTGCCGCTCTGACCACTGGCCACTGAGTGATGTGCGGCTCTT
CCTCAGCCAGTATTCAGCGTCAGTCCACTCCCTGGATGGCTTCCGGCACCCAGGCACTCTGGACCGCTAC
ATGGGCACCTCCGTGGCTGCCTTCTGCGCCTCTATCATGAT

ACGCGTACGCGGCCGCTCGAG - GFP Tag - GTTTAA



[View online »](#)

Protein Sequence: >MG205602 representing BC031716
 Red=Cloning site Green=Tags(s)

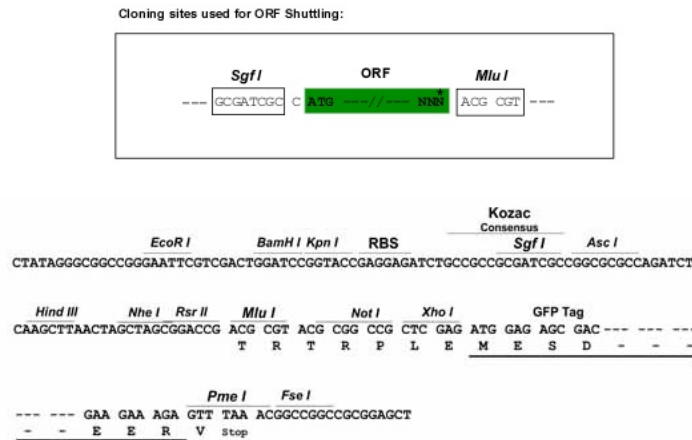
MTSELDIFVGNTTLLIDEDVYRLWLDGYSVNDAAVALRVRSGLILEQTGATTGVLQSDTMDHYRTFHMLERLL
 HAPPKLLHQLIFQIPPSRQTLIIERYTFDEAFVREVLGKKLSKGTKKLDDISTKTGITLTKSCRRQFDN
 FKRVFKVVEEMRGLVDNIQQHFLLSDRLARDYAAIVFFANNRFETGKKLQYLSFGDFAFCAELMIQNW
 TLGAVGEAPTDPSQVDDMDVDLDKEFLQDLKELKVLVADKDLLDLHKS LVCTALRGKLG VFSMETNFK
 NLSRGLVNVAAKLTHNKDVRDLFVDLVEK FVEPCRS DHWPLSDVRLFLSQYSASVHSLDGRFRHQALWDRY
 MGLRGCLLLRYHD

TRTRPLE - GFP Tag - V

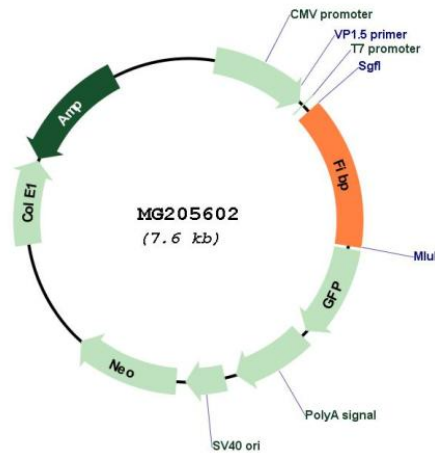
Restriction Sites:

SgfI-MluI

Cloning Scheme:



Plasmid Map:



ACCN:

BC031716

ORF Size:	1094 bp
OTI Disclaimer:	The molecular sequence of this clone aligns with the gene accession number as a point of reference only. However, individual transcript sequences of the same gene can differ through naturally occurring variations (e.g. polymorphisms), each with its own valid existence. This clone is substantially in agreement with the reference, but a complete review of all prevailing variants is recommended prior to use. More info
OTI Annotation:	This clone was engineered to express the complete ORF with an expression tag. Expression varies depending on the nature of the gene.
Components:	The ORF clone is ion-exchange column purified and shipped in a 2D barcoded Matrix tube containing 10ug of transfection-ready, dried plasmid DNA (reconstitute with 100 ul of water).
Reconstitution Method:	<ol style="list-style-type: none">1. Centrifuge at 5,000xg for 5min.2. Carefully open the tube and add 100ul of sterile water to dissolve the DNA.3. Close the tube and incubate for 10 minutes at room temperature.4. Briefly vortex the tube and then do a quick spin (less than 5000xg) to concentrate the liquid at the bottom.5. Store the suspended plasmid at -20°C. The DNA is stable for at least one year from date of shipping when stored at -20°C.
RefSeq:	BC031716 , AAH31716
RefSeq Size:	1234 bp
RefSeq ORF:	1094 bp
Locus ID:	58249
Cytogenetics:	19 A
Gene Summary:	May be involved in mitogenic function of FGF1 (By similarity). May mediate with IER2 FGF-signaling in the establishment of laterality in the embryo (By similarity).[UniProtKB/Swiss-Prot Function]