

## Product datasheet for **MG205596**

### **Pld5 (BC100428) Mouse Tagged ORF Clone**

#### Product data:

Product Type:	Expression Plasmids
Product Name:	Pld5 (BC100428) Mouse Tagged ORF Clone
Tag:	TurboGFP
Symbol:	Pld5
Synonyms:	B230365F16Rik
Mammalian Cell Selection:	Neomycin
Vector:	pCMV6-AC-GFP (PS100010)
E. coli Selection:	Ampicillin (100 ug/mL)
ORF Nucleotide Sequence:	>MG205596 representing BC100428 Red=Cloning site Blue=ORF Green=Tags(s)

GACGTTGTATACGACTCCTATAGGGCGGCCGGAATTCGTCGACTGGATCCGGTACCGAGGAGATCTGCC  
GCC**GGCGGCC**

ATGGGAGAGGATGAGGATGGACTCTCAGAGAAGAATTGCCAAAATAAATGTCGAATTGCTCTTGTGGAAA  
ACATTCCTGAAGGCCTTAACTACTCTGAAGATGCCCGTTTCACCTACCGCTCTTCCAAGGCTGGATGAA  
CTTACTCAACATGGCCAAAAAGTCTGTGGACATAGTGTCTTCCATTGGGACCTCAACCACACTCACCCA  
GCTGCATGTCAGGGTCAACGTCTCTTTGAGAAGTTGCTCCAGCTGACGTCGCAAAACATCGAAGTCAAGC  
TGGTGAGCGACGTGACCGCAGATTCAAAGTATTAGAAGCCTTGAAGTTAAAGGGTGCTGAGGTGACATA  
CATGAACATGACCGCCTACAACAAGGGCCGGCTGCAAGTCGTCCTTCTGGATTGTGGACAAACAGCATGTG  
TACATTGGCAGTGCAGGCTTAGACTGGCGATCGCTTGGACAGATGAAAGAACTCGGTGTCATCTTCTACA  
ACTGCAGCTGCCTGGTCCTAGATTTACAAGGATATTCGCTTTATATAGCTCATTAAAAATCAAGAGCAG  
AGTACCTCAGACCTGGTCCAAGAGACTCTATGGAGTCTATGACAATGAGAAGAAGCTTACGCTCCAATTG  
AACGAAACCAAGTCACAGGCCTTTGTGTCGAACTCTCCAAACTCTTTGCCCTAAAAACAGAAGCTTTG  
ACATCGATGCCATCTACAGCGTGATTGACGATGCCAAACAGTACGTGTACATTGCCGTACCCGACTACCT  
GCCTATCTCCAGCAGCAGCAGCAAAAGGACTTACTGGCCAGATTTAGATGGGAAGATAAGAGAAGCATT  
GTTTTACGAAGCGTTAAAGTCCGGCTGCTCATAAGCTTCTGGAAGGAGACTGATCCCCTACGTTCACT  
TCATCTCGTCTCTTAAAGCTATTTGCACTGAAATAGCCAAGTGCAGTTTGAAGTTAAATTTTTGATCT  
GGAAAGAGAGAATGCTTGTGCAACGAAAGAACAAAGAACCAGACCTTTCCCAAATTAACCACAACAAG  
TACATGGTGACAGACGGGCAGCTTACATCGAAATTTTGAC

**ACCGT**ACGCGGCCGCTCGAG - GFP Tag - GTTTAA



[View online »](#)

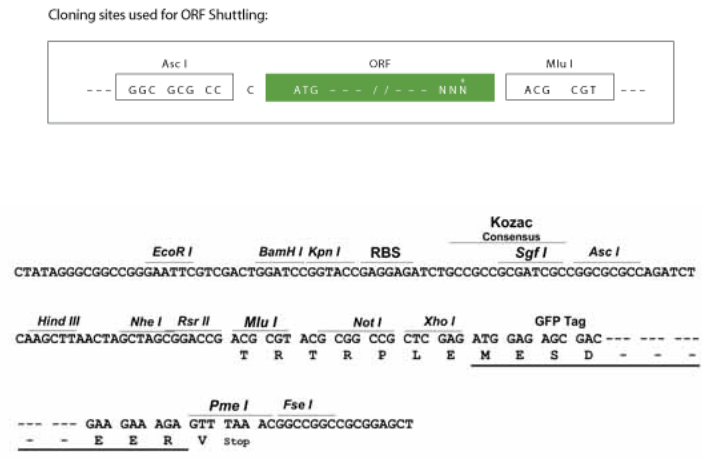
**Protein Sequence:** >MG205596 representing BC100428  
 Red=Cloning site Green=Tags(s)

MGEDDGLSEKNCQNKCRIVALVENIPEGLNYSAPFHLPLFQGMNLLNMAKKSVDIVSSHDLNHTHP  
 AACQOQRLFEKLLQLTSQNIIEVKLVSDVTADSKVLEALKLGAEVYMNMTAYNKGRQLQSSFWIVDKQHV  
 YIGSAGLDWRSLGQMKELGVIFYNCSCSLVLDLQRIFALYSSLKFKSRVPQTWSKRLYGVYDNEKKLQLQL  
 NETKSQAFVSNPKLFCPKNRSFDIDAIYSVIDDAKQYVYIAVTDYLPISSTSSKRTYWPDLDGKIREAL  
 VLRSVKVRLLIISFWKETDPLTFNFISLKAICTEIANCSLKVKFFDLERENACATKEQKNQTFPKLNRNK  
 YMVTGAAAYIGNFD

TRTRPLE - GFP Tag - V

**Restriction Sites:** AscI-MluI

**Cloning Scheme:**



**ACCN:** BC100428

**ORF Size:** 1092 bp

**OTI Disclaimer:** The molecular sequence of this clone aligns with the gene accession number as a point of reference only. However, individual transcript sequences of the same gene can differ through naturally occurring variations (e.g. polymorphisms), each with its own valid existence. This clone is substantially in agreement with the reference, but a complete review of all prevailing variants is recommended prior to use. [More info](#)

**OTI Annotation:** This clone was engineered to express the complete ORF with an expression tag. Expression varies depending on the nature of the gene.

**Components:** The ORF clone is ion-exchange column purified and shipped in a 2D barcoded Matrix tube containing 10ug of transfection-ready, dried plasmid DNA (reconstitute with 100 ul of water).

**Reconstitution Method:**

1. Centrifuge at 5,000xg for 5min.
2. Carefully open the tube and add 100ul of sterile water to dissolve the DNA.
3. Close the tube and incubate for 10 minutes at room temperature.
4. Briefly vortex the tube and then do a quick spin (less than 5000xg) to concentrate the liquid at the bottom.
5. Store the suspended plasmid at -20°C. The DNA is stable for at least one year from date of shipping when stored at -20°C.

**RefSeq:** [BC100428.1](#)

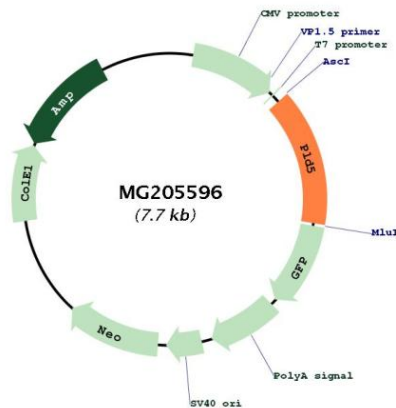
**RefSeq Size:** 1629 bp

**RefSeq ORF:** 1094 bp

**Locus ID:** 319455

**Cytogenetics:** 1 H4

**Product images:**



Circular map for MG205596