

Product datasheet for **MG205570**

C1galt1 (NM_052993) Mouse Tagged ORF Clone

Product data:

Product Type: Expression Plasmids
Product Name: C1galt1 (NM_052993) Mouse Tagged ORF Clone
Tag: TurboGFP
Symbol: C1galt1
Synonyms: 2210410E06Rik; AV284120; T-synthase
Mammalian Cell Selection: Neomycin
Vector: pCMV6-AC-GFP (PS100010)
E. coli Selection: Ampicillin (100 ug/mL)
ORF Nucleotide Sequence: >MG205570 representing NM_052993
 Red=Cloning site Blue=ORF Green=Tags(s)

TTTTGTAATACGACTCACTATAGGGCGGCCGGAATTCGTCGACTGGATCCGGTACCGAGGAGATCTGCC
 GCC**CGATCGCC**

ATGGCCTCTAAATCTTGGCTGAATTTTTAGTCTTCTCTGTGGATCAGCAATAGGGTTTTTTTTATGTT
 CTCAACTCTTGAGTATTTTGTTCGAGAAGAGGCTGCCATTAGCCTAACATGCTTCACAATGACCCCTCA
 TGCAAGGCATTCAGATGACAATGGACACAGTCACCTCAAAGGACAGATGAACTTCAATGCAGATCCAGC
 CAACATAAAGATGAGAACATAGACGTTGCTGAGAACCTCTATCAGAAAGTAAAAATCTTTGTTGGGTTA
 TGACAAGTCCTCAAATCTAGAGAAAAAGCCAAACATGTCAAAGCTACGTGGGCCAGCGTTGTAATAA
 AGTGTATTTATGAGTTCCGGAAGAAAATCAGGACTTCCCTACTGTGGGATTGAAAACCAAAGAGGCAGA
 GAGCAACTATATTGAAAACAATTAAGCTTTCCAGTATGTACATGACCATTATTTAGAAGATGCTGACT
 GGTTTATGAAAGCAGATGACGACACATACGTCATTGTGGACAACCTGAGATGGCTTCTATCAAAGTATGA
 CCCTGAACAACCCATTTACTTTGGGCGAAGATTAAGCCCTATGTGAAGCAGGGATACATGAGCGGAGGA
 GCGGGCTATGTCCTAAGCAAGGAAGCCTTGAGAAGATTTGTTAATGCATTTAAAACAGAAAAGTGTACAC
 ATAGTTCCTCCATCGAAGACTTAGCTCTGGGAAGGTGCATGGAATTAATAATGTAGAAGCTGGAGATTC
 CAGAGATACCATTGGGAAAGAAACCTTCCATCCATTTGTACCAGAACACCACTTAATCAAAGTTATCTA
 CCAAAAACATTTTGGTACTGGAATTACAACCTATTATCCTCCCATAGAGGGTCTGGATGCTGTTCTGATA
 TTGCAGTTTCTTTTCACTATGTTGATGGGACAACCTATGTATGAATTAGAATACCTCGTTTATCGTCTTCG
 TCCATATGGTTGTTTATATAGATATCAACCTGCCTTACCTGAGAATATACTGAAAGAAATTAATCAAGTA
 AACAGAAAGGAAGATACAAAAATAAATTAGGCAACCC

ACCGTACGCGGCCGCTCGAG - GFP Tag - GTTTAA



[View online »](#)

Protein Sequence: >MG205570 representing NM_052993
 Red=Cloning site Green=Tags(s)

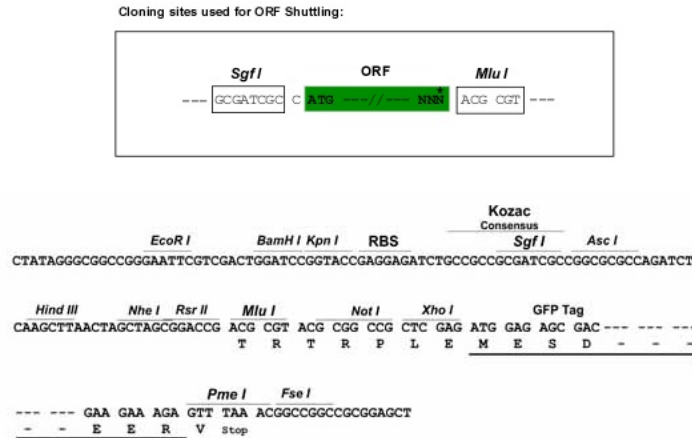
MASKSWLNFLVFLCGSAIGFFLCSQLLSILLREEAAIQPNMLHNDPHARHSDDNHSHLKGQMNFNADSS
 QHKDENIDVAENLYQKVKILCWVMTSPQNLKAKHVKATWAQRCNKVLFMSSEENQDFPTVGLKKEGR
 EQLYWKTIKAFQYVHDHYLEDADWFMKADDDTYIVDNLRWLLSKYDPEQPIYFGRRFKPYVKQGYMSGG
 AGYVLSKEALRRFVNAFKTEKCTHSSSIEDLALGRCMEIINVEAGDSRDTIGKETFHFPVPEHHLIKGYL
 PKTFWYWNYNYPPIEGPGCCSDIAVSFHYVDGTTMYELELYLRYLRPYGCLYRYQPALPENILKEINQV
 NRKEDTKIKLGNP

TRTRPLE - GFP Tag - V

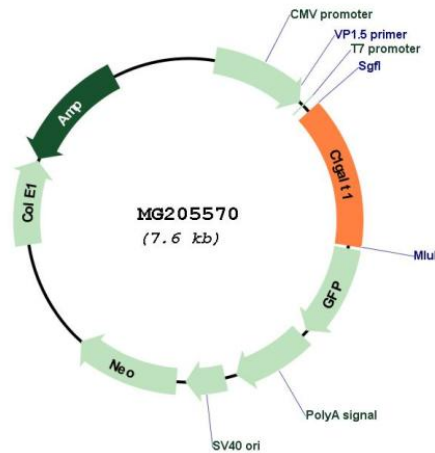
Restriction Sites:

Sgfl-MluI

Cloning Scheme:



Plasmid Map:



ACCN:

NM_052993

ORF Size:	1089 bp
OTI Disclaimer:	The molecular sequence of this clone aligns with the gene accession number as a point of reference only. However, individual transcript sequences of the same gene can differ through naturally occurring variations (e.g. polymorphisms), each with its own valid existence. This clone is substantially in agreement with the reference, but a complete review of all prevailing variants is recommended prior to use. More info
OTI Annotation:	This clone was engineered to express the complete ORF with an expression tag. Expression varies depending on the nature of the gene.
Components:	The ORF clone is ion-exchange column purified and shipped in a 2D barcoded Matrix tube containing 10ug of transfection-ready, dried plasmid DNA (reconstitute with 100 ul of water).
Reconstitution Method:	<ol style="list-style-type: none">1. Centrifuge at 5,000xg for 5min.2. Carefully open the tube and add 100ul of sterile water to dissolve the DNA.3. Close the tube and incubate for 10 minutes at room temperature.4. Briefly vortex the tube and then do a quick spin (less than 5000xg) to concentrate the liquid at the bottom.5. Store the suspended plasmid at -20°C. The DNA is stable for at least one year from date of shipping when stored at -20°C.
RefSeq:	NM_052993.2 , NP_443719.2
RefSeq Size:	1983 bp
RefSeq ORF:	1092 bp
Locus ID:	94192
UniProt ID:	Q9JJ06
Cytogenetics:	6 A1
Gene Summary:	Glycosyltransferase that generates the core 1 O-glycan Gal-beta1-3GalNAc-alpha1-Ser/Thr (T antigen), which is a precursor for many extended O-glycans in glycoproteins. Plays a central role in many processes, such as angiogenesis, thrombopoiesis and kidney homeostasis development.[UniProtKB/Swiss-Prot Function]