

Product datasheet for **MG205504**

Mab21I2 (NM_011839) Mouse Tagged ORF Clone

Product data:

Product Type: Expression Plasmids
 Product Name: Mab21I2 (NM_011839) Mouse Tagged ORF Clone
 Tag: TurboGFP
 Symbol: Mab21I2
 Mammalian Cell Selection: Neomycin
 Vector: pCMV6-AC-GFP (PS100010)
 E. coli Selection: Ampicillin (100 ug/mL)
 ORF Nucleotide Sequence: >MG205504 representing NM_011839
 Red=Cloning site Blue=ORF Green=Tags(s)

GACGTTGTATACGACTCCTATAGGGCGGCCGGAATTCGTCGACTGGATCCGGTACCGAGGAGATCTGCC
 GCCGGCGGCC

ATGATCGCCGCTCAGGCCAAGCTGGTTTACCAGCTCAATAAATACTACACCGAGCGCTGCCAGGCGCGCA
 AGGCTGCGATCGCCAAGACCATCCGAGAAGTCTGCAAGGTAGTGTGCGATGTGCTAAAGGAAGTGGAGGT
 GCAAGAGCCCCGTTTCATCAGCTCTCTGAGTGAGATTGACGCCCGCTACGAGGGGCTGGAGGTAATCTCG
 CCCACCGAGTTCGAGGTGGTACTCTACCTCAACCAGATGGGAGTCTTCAACTTCGTGGACGACGGATCTC
 TGCCCGGCTGTGCCGTGCTCAAACCTAAGCGATGGGCGGAAGCGGAGCATGTCTTTGGTTCGAGTTTC
 CACAGCGTCTGGCTACCTTTCTGCGCGCAAGATCCGCTCGCGTTTCCAGACACTAGTAGCCAGGCGGTG
 GACAAGTGCAGCTACCGGACGTGGTCAAGATGATCGCCGACACTAGTGAGGTCAAGTTGCGCATCAGGG
 AGCGCTACGTGGTGCAAATCACCCAGCGTTCAAGTGCACCGGGATCTGGCCTCGCAGCGCGGCACAGTG
 GCCTATGCCCCACATCCCCTGGCCCGGCCCAATCGGGTGGCGGAGGTCAAGGCCGAAGGTTCAACTTG
 CTCTCAAAGGAGTGTACTCGTACTGGCAAGCAGAGCTCCGCAGAAAGCGACGCTGGGTGCTGCAGT
 TCGGTGAGGCGGAGAACCCTTGTGATGGGCGGCTGTAGAAACAAGTGCCTCTCGGTGCTGAAGACGCT
 GCGGGACCGCCACCTGGAGCTGCCTGGCCAGCCGCTCAATAACTACCACATGAAGACGCTGCTGCTAC
 GAGTGCAGAAACACCCGAGGAAACGGACTGGGACGAGGCTTGTGGGCGACCGTCTGAACGGCATCC
 TGCTACAGCTCATCTCCTGCCTGCAAGTCCGCGCTGCCCTCACTACTTTTTGCCAACCTCGACCTCTT
 CCAGGGTAAGCCCCACTCGGCCCTGGAGAGCGCTGCCAAGCAGACCTGGAGATTGCCAGGAAATCCTC
 ACCAATCCAAAAGCTTGGACAACTA

ACGCGTACGCGGCCGCTCGAG - GFP Tag - GTTTAA



[View online »](#)

Protein Sequence: >MG205504 representing NM_011839
 Red=Cloning site Green=Tags(s)

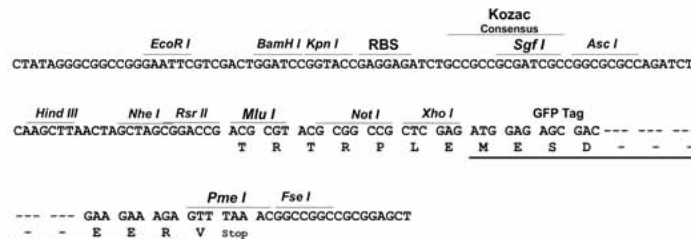
MIAAQAKLVYQLNKYYTERCQARKAAIAKTIREVCKVVSVDVLKEVEVQEPRFISSLSEIDARYEGLEVIS
 PTEFEVVLVLNQMVFNFVDDGSLPGCAVLKLSDGRKRSMWVEFITASGYLSARKIRSRFQTLVAQAV
 DKCSYRDVVKMIADTSEVKLRIRERYVVQITPAFKCTGIWPRSAQWMPHIPWPMPNRVAEVKAEGFNL
 LSKECYSLTGKQSSAESDAWVLQFGEAENRLMGGCRNKCLSVLKTLRDRHLELPGQPLNNYHMKLLLLY
 ECEKHPRETDWDEACLGDRLNGILLQLISCLQCRRCPHYFLPNLDFQGKPHSALESAAKQTWRLAREIL
 TNPKSLDKL

TRTRPLE - GFP Tag - V

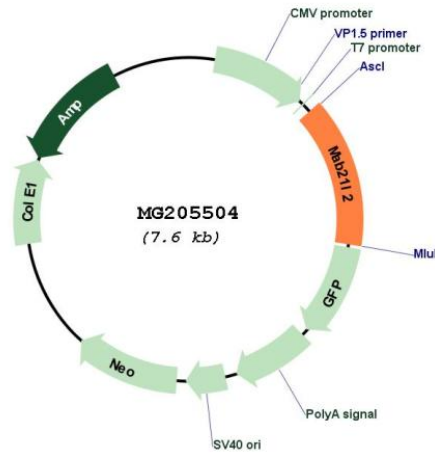
Restriction Sites: AscI-MluI

Cloning Scheme:

Cloning sites used for ORF Shuttling:



Plasmid Map:



ACCN: NM_011839

ORF Size:	1077 bp
OTI Disclaimer:	The molecular sequence of this clone aligns with the gene accession number as a point of reference only. However, individual transcript sequences of the same gene can differ through naturally occurring variations (e.g. polymorphisms), each with its own valid existence. This clone is substantially in agreement with the reference, but a complete review of all prevailing variants is recommended prior to use. More info
OTI Annotation:	This clone was engineered to express the complete ORF with an expression tag. Expression varies depending on the nature of the gene.
Components:	The ORF clone is ion-exchange column purified and shipped in a 2D barcoded Matrix tube containing 10ug of transfection-ready, dried plasmid DNA (reconstitute with 100 ul of water).
Reconstitution Method:	<ol style="list-style-type: none">1. Centrifuge at 5,000xg for 5min.2. Carefully open the tube and add 100ul of sterile water to dissolve the DNA.3. Close the tube and incubate for 10 minutes at room temperature.4. Briefly vortex the tube and then do a quick spin (less than 5000xg) to concentrate the liquid at the bottom.5. Store the suspended plasmid at -20°C. The DNA is stable for at least one year from date of shipping when stored at -20°C.
RefSeq:	NM_011839.4
RefSeq Size:	2703 bp
RefSeq ORF:	1080 bp
Locus ID:	23937
UniProt ID:	Q8BPP1
Cytogenetics:	3 F1
Gene Summary:	Required for several aspects of embryonic development including normal development of the eye, notochord, neural tube and other organ tissues, and for embryonic turning. [UniProtKB/Swiss-Prot Function]