

Product datasheet for **MG205468**

Skap2 (NM_018773) Mouse Tagged ORF Clone

Product data:

Product Type:	Expression Plasmids
Product Name:	Skap2 (NM_018773) Mouse Tagged ORF Clone
Tag:	TurboGFP
Symbol:	Skap2
Synonyms:	2610021A10Rik; AA960083; BB137539; mSKAP55R; RA70; Saps; Scap2; SKAP-HOM
Mammalian Cell Selection:	Neomycin
Vector:	pCMV6-AC-GFP (PS100010)
E. coli Selection:	Ampicillin (100 ug/mL)
ORF Nucleotide Sequence:	>MG205468 representing NM_018773 Red=Cloning site Blue=ORF Green=Tags(s)

TTTTGTAATACGACTCACTATAGGGCGGCCGGAATTCGTCGACTGGATCCGGTACCGAGGAGATCTGCC
GCC**CGATCGCC**

ATGCCAACCCAGCTGTACCTCTTCTCCCGCCCTCTCCCTGAGGAAATTAGGAACCTGTTGGCAGATG
TTGAAACATTTGTGCAGACACACTGAAAGGAGAAAATTTATCCAAGAAAGCCAAGGAAAAGAGAGAATC
TCTCATTAAAGAAGATAAAAGATGTAAGTCTGTCTATCTTCAGGAATTTCAAGACAAAGGTGATGCTGAG
GACGGCGATGAATATGACGATCCCTTTGCTGGCCTGCAGACACGATTTCTTAGCCTCAGAGCGCTACG
ATAAAGATGATGATGGCCCTCTGATGGAAACCAGTTTCTCCATTGCAGCCCAGGACCTTCTTTTTGT
CATAAAGGCTGGCTACCTGGAAAAACGCAGAAAAGATCACAGCTTCTGGGGTTTGAATGGCAGAAACGG
TGGTGTGCGCTCAGCAAAACAGTGTCTATTATTACGGGAGCGATAAAGACAAGCAACAGAAAGGTGAAT
TTGCAATAGATGGCTATGATGTCAGAATGAACAACACCCTTAGGAAGGATGGAAAGAAAGATTGCTGTTT
TGAAATCTGTGCTCCCGACAAACGTATCTATCAGTTTACAGCAGCCTCTCCCAAAGATGCTGAGGAATGG
GTCCAGCAGCTGAAATTTATACTACAAGACCTGGGATCCGACGTTATTCTGAGGATGATGAGGAAAAGAG
GAGAATTATATGATGACGTTGACCATCCTGCTGCCGTGAGCAGCCCGAGAGGCCAGCCAATCGATGA
TGAGATTTATGAGGAGCTCCCAGAGGAGGAAGAGGACACTGCTTCAGTGAAGATGGACGAGCAAGGGAAG
GGAAGTCGGGACAGTGTGCATCACACCTCAGGAGATAAAAGCACTGATTACGCTAATTTTTACCAGGGTC
TGTGGGACTGCACTGGAGCTCTGTCTGATGAGTTGCTCTTAAGCGTGGTATGATTTACATTTAG
CAAGGAATACAATAGATATGGCTGGTGGTAGGAGAGATGAAGGGAGCCATTGGCTTGGTGCCTAAAGCC
TACCTAATGGAGATGTATGATATT

ACGCGTACGCGGCCGCTCGAG - GFP Tag - GTTTAA



[View online »](#)

Protein Sequence:

>MG205468 representing NM_018773
Red=Cloning site Green=Tags(s)

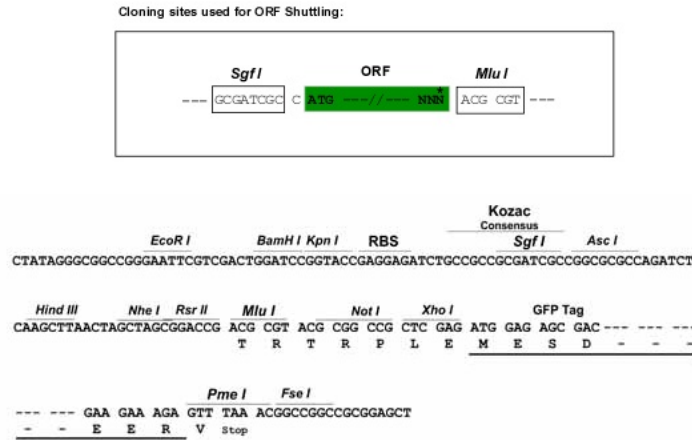
MPNPSCTSSPGPLPEEIRNLLADVETFVADTLKGENLSKKAKEKRESLIKIKDKVSVYLQEFQDKGDAE
 DGDEYDDPFAGPADTISLASERYDKDDGSDGNQFPPIAAQDLPFVIKAGYLEKRRKDHSLGFWEQKR
 WCALSKTVFYFGSDKDKQKGEFAIDGYDVRMNNLTKDGKDKCCFEICAPDKRIYQFTAAASPDAEEW
 VQQLKFIHQDLGSDVIPEDDEERGELYDDVDHPAAVSSPQRSQPIDDEIYEELPEEEEDTASVKMDEQK
 GSRDSVHHTSGDKSTDYANFYQGLWDCTGALSDELDFKRGDVIYILSKEYNRYGWVWVEMKGAIGLVPKA
 YLMEMYDI

TRTRPLE - GFP Tag - V

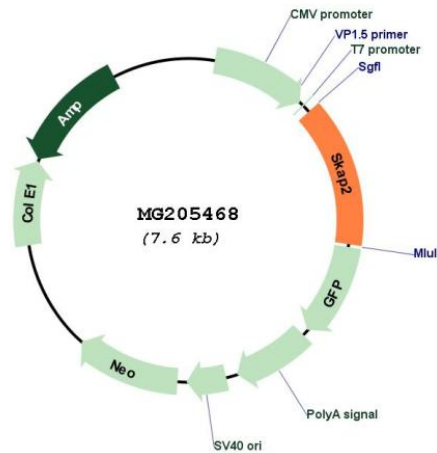
Restriction Sites:

SgfI-MluI

Cloning Scheme:



Plasmid Map:



ACCN:

NM_018773

ORF Size:	1074 bp
OTI Disclaimer:	<p>Due to the inherent nature of this plasmid, standard methods to replicate additional amounts of DNA in E. coli are highly likely to result in mutations and/or rearrangements. Therefore, OriGene does not guarantee the capability to replicate this plasmid DNA. Additional amounts of DNA can be purchased from OriGene with batch-specific, full-sequence verification at a reduced cost. Please contact our customer care team at custsupport@origene.com or by calling 301.340.3188 option 3 for pricing and delivery.</p> <p>The molecular sequence of this clone aligns with the gene accession number as a point of reference only. However, individual transcript sequences of the same gene can differ through naturally occurring variations (e.g. polymorphisms), each with its own valid existence. This clone is substantially in agreement with the reference, but a complete review of all prevailing variants is recommended prior to use. More info</p>
OTI Annotation:	This clone was engineered to express the complete ORF with an expression tag. Expression varies depending on the nature of the gene.
Components:	The ORF clone is ion-exchange column purified and shipped in a 2D barcoded Matrix tube containing 10ug of transfection-ready, dried plasmid DNA (reconstitute with 100 ul of water).
Reconstitution Method:	<ol style="list-style-type: none"> 1. Centrifuge at 5,000xg for 5min. 2. Carefully open the tube and add 100ul of sterile water to dissolve the DNA. 3. Close the tube and incubate for 10 minutes at room temperature. 4. Briefly vortex the tube and then do a quick spin (less than 5000xg) to concentrate the liquid at the bottom. 5. Store the suspended plasmid at -20°C. The DNA is stable for at least one year from date of shipping when stored at -20°C.
RefSeq:	NM_018773.2 , NP_061243.1
RefSeq Size:	1656 bp
RefSeq ORF:	1077 bp
Locus ID:	54353
UniProt ID:	Q3UNDO
Cytogenetics:	6 B3
Gene Summary:	<p>May be involved in B-cell and macrophage adhesion processes. In B-cells, may act by coupling the B-cell receptor (BCR) to integrin activation. May play a role in src signaling pathway. [UniProtKB/Swiss-Prot Function]</p>