

Product datasheet for **MG205460**

Neurod1 (NM_010894) Mouse Tagged ORF Clone

Product data:

Product Type:	Expression Plasmids
Product Name:	Neurod1 (NM_010894) Mouse Tagged ORF Clone
Tag:	TurboGFP
Symbol:	Neurod1
Synonyms:	BETA2; BHF-1; bHLHa3; Nd1; Neurod
Mammalian Cell Selection:	Neomycin
Vector:	pCMV6-AC-GFP (PS100010)
E. coli Selection:	Ampicillin (100 ug/mL)
ORF Nucleotide Sequence:	>MG205460 representing NM_010894 Red=Cloning site Blue=ORF Green=Tags(s)

TTTTGTAATACGACTCACTATAGGGCGGCCGGAATTCGTCGACTGGATCCGGTACCGAGGAGATCTGCC
 GCC**CGATCGC**

ATGACCAAATCATACAGCGAGAGCGGGCTGATGGGCGAGCCTCAGCCCCAAGGTCCCCAAGCTGGACAG
 ATGAGTGTCTCAGTTCTCAGGACGAGGAACACGAGGCAGACAAGAAAGAGGACGAGCTTGAAGCCATGAA
 TGCAGAGGAGGACTCTCTGAGAAACGGGGAGAGGAGGAGGAGGAAGATGAGGATCTAGAGGAAGAGGAG
 GAAGAAGAAGAGGAGGAGGAGGATCAAAAGCCCAAGAGACGGGGTCCAAAAAGAAAAAGATGACCAAGG
 CGCGCCTAGAACGTTTTAAATTAAGGCGCATGAAGGCCAACGCCGCGAGCGGAACCGCATGCACGGGCT
 GAACGCGGCGCTGGACAACCTGCGCAAGGTGGTACCTTGCTACTCCAAGACCCAGAACTGTCTAAATA
 GAGACACTGCGCTTGGCCAAGAACTACATCTGGGCTCTGTGAGAGATCCTGCGCTCAGGCAAAAGCCCTG
 ATCTGGTCTCCTTCGTACAGACGCTCTGCAAGGTTTGTCCCAGCCCACTACCAATTTGGTCGCGGCTG
 CCTGCAGCTCAACCTCGGACTTTCTTGCTGAGCAGAACCCGGACATGCCCCCGCATCTGCCAACC GCC
 AGCGCTTCCTTCCCGTGATCCCTACTCCTACAGTCCCCTGGACTGCCAGCCCGCCCTACGGCACCA
 TGGACAGCTCCACGCTTCCACGTCAAGCCGCCGCCACAGCCTACAGCGCAGCTCTGGAGCCCTTCTT
 TGAAAGCCCCCTAACTGACTGCACGAGCCCTTCTTTGACGGACCCCTCAGCCCGCCGCTCAGCATCAAT
 GGCAACTTCTCTTCAAACACGAACCATCCGCCGAGTTTGAAAAAATTATGCCTTTACCATGCACTACC
 CTGCAGCGACGCTGGCAGGGCCCCAAAGCCACGGATCAATCTTCTTCCGGTGCCGCTGCCCTCGCTG
 CGAGATCCCATAGACAACATTATGTCTTTCGATAGCCATTGCGATCATGAGCGAGTCATGAGTGCCAG
 CTTAATGCCATCTTTCACGAT

ACGCGTACGCGGCCGCTCGAG - GFP Tag - GTTTAA


[View online »](#)

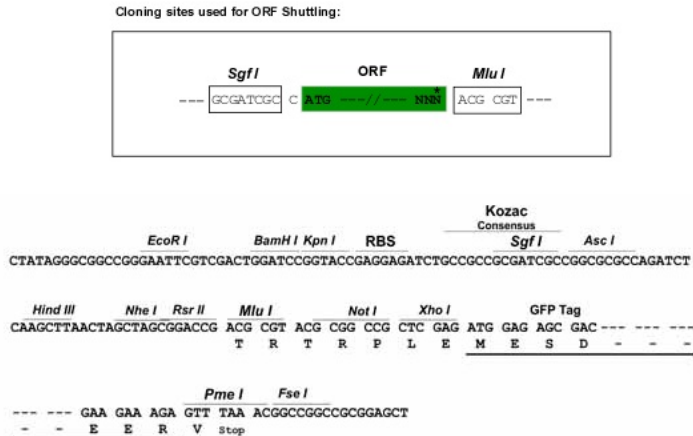
Protein Sequence: >MG205460 representing NM_010894
 Red=Cloning site Green=Tags(s)

MTKSYSESGLMGEPQPQGPPSWTDECLSSQDEEHEADKKEDELEAMNAEEDSLRNGGEEEEDEDELEEE
 EEEEEEDQKPKRRGPKKKKMTKARLERFKLRMKANARERNRMHGLNAALDNLKVVPCYSKTQKLSKI
 ETLRLAKNYIWALSEILRSGKSPDLVSFVQTLCKGLSQPTTNLVAGCLQLNPRTFLPEQNPDMPHPLTA
 SASFPVHPYSYQSPGLPSPPYGTMDSHVHVKPPPHAYSAALEPFFESPLTDCTSPSFDGPLSPPLSIN
 GNFSFKHEPSAEFEKNYAFTMHYPAATLAGPQSHGSIFSSGAAAPRCEIPIDNIMSFDSHSHHERVMSAQ
 LNAIFHD

TRTRPLE – GFP Tag – V

Restriction Sites: SgfI-MluI

Cloning Scheme:



ACCN: NM_010894

ORF Size: 1071 bp

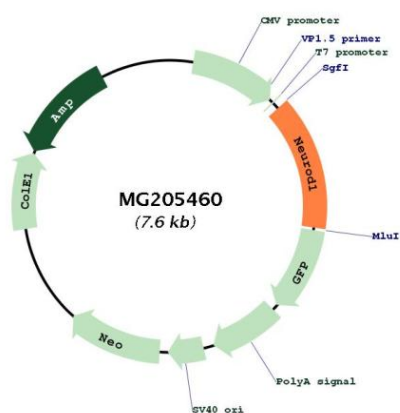
OTI Disclaimer: The molecular sequence of this clone aligns with the gene accession number as a point of reference only. However, individual transcript sequences of the same gene can differ through naturally occurring variations (e.g. polymorphisms), each with its own valid existence. This clone is substantially in agreement with the reference, but a complete review of all prevailing variants is recommended prior to use. [More info](#)

OTI Annotation: This clone was engineered to express the complete ORF with an expression tag. Expression varies depending on the nature of the gene.

Components: The ORF clone is ion-exchange column purified and shipped in a 2D barcoded Matrix tube containing 10ug of transfection-ready, dried plasmid DNA (reconstitute with 100 ul of water).

Reconstitution Method:	<ol style="list-style-type: none"> 1. Centrifuge at 5,000xg for 5min. 2. Carefully open the tube and add 100ul of sterile water to dissolve the DNA. 3. Close the tube and incubate for 10 minutes at room temperature. 4. Briefly vortex the tube and then do a quick spin (less than 5000xg) to concentrate the liquid at the bottom. 5. Store the suspended plasmid at -20°C. The DNA is stable for at least one year from date of shipping when stored at -20°C.
Note:	Plasmids are not sterile. For experiments where strict sterility is required, filtration with 0.22um filter is required.
RefSeq:	<u>NM_010894.3</u>
RefSeq Size:	2495 bp
RefSeq ORF:	1074 bp
Locus ID:	18012
UniProt ID:	<u>Q60867</u>
Cytogenetics:	2 47.58 cM
Gene Summary:	<p>Acts as a transcriptional activator: mediates transcriptional activation by binding to E box-containing promoter consensus core sequences 5'-CANNTG-3'. Associates with the p300/CBP transcription coactivator complex to stimulate transcription of the secretin gene as well as the gene encoding the cyclin-dependent kinase inhibitor CDKN1A. Contributes to the regulation of several cell differentiation pathways, like those that promote the formation of early retinal ganglion cells, inner ear sensory neurons, granule cells forming either the cerebellum or the dentate gyrus cell layer of the hippocampus, endocrine islet cells of the pancreas and enteroendocrine cells of the small intestine. Together with PAX6 or SIX3, is required for the regulation of amacrine cell fate specification. Also required for dendrite morphogenesis and maintenance in the cerebellar cortex. Associates with chromatin to enhancer regulatory elements in genes encoding key transcriptional regulators of neurogenesis.[UniProtKB/Swiss-Prot Function]</p>

Product images:



Circular map for MG205460