

Product datasheet for **MG205382**

L3hypdh (NM_026038) Mouse Tagged ORF Clone

Product data:

Product Type:	Expression Plasmids
Product Name:	L3hypdh (NM_026038) Mouse Tagged ORF Clone
Tag:	TurboGFP
Symbol:	L3hypdh
Synonyms:	2810055F11Rik
Mammalian Cell Selection:	Neomycin
Vector:	pCMV6-AC-GFP (PS100010)
E. coli Selection:	Ampicillin (100 ug/mL)
ORF Nucleotide Sequence:	>MG205382 representing NM_026038 Red=Cloning site Blue=ORF Green=Tags(s)

TTTTGTAATACGACTCACTATAGGGCGGCCGGAATTCGTCGACTGGATCCGGTACCGAGGAGATCTGCC
GCC**CGATCGCC**

ATGGAGGCGCGCTGGCAGTGACCCGGCTGCCCCACACGACTCGAGGACGCCAGCACTGTCGGTGGTGG
ACATGCACACAGGCGGCGAGCCTCTGCGCATCGTGCACGCCGGGTGCCGGAGGTGGCAGGGCCACGTT
GCTGGCCAAGCGTCGCTACATGCGTCAACACCTCGACTACATCCGGCGGCGGCTCGTGTTCGAGCCCGC
GGCCACCGGGACATGTACGGGGCCATCCTGATGCCAGTGAGCTGCCAGACGCACACCTAGGCGTCTGT
TCTTGACAACGAAGGCTACAGTCCATGTGCGGTACGCGGTGCTAGCGCTGGGCGCTTCGCGCTCGA
CTTTGGACTGGTCCCGCTCCCCAGAAGGCGCCCGGAGGCTCAGGTCAACATCCACTGCCCGTGTGGT
CTGGTGACCGCCTTCGTAGAGTGTGAAGGTGGCCGAGTTGCGGCCCTGTGCGCTTCCACAGCGTCCAG
CCTTTGTCCTGGCCTCAGACCTCACAGTGGATGTTCTGGCCATGGAAAGGTGCTGGTGGACATTGCATA
TGGTGGGGCATTATGCGTTTGTAGTGCAGAAAAATTAGGACTTGATGTGTGTCTGCGAAGACGAGG
GACCTTGTGGATGCGGCAAGTGCATTGACAGGAGCAGTGAAGGCACAGTTAAAAACAACCATCTGAGA
GTGAAGACCTTGGTTTTTTGATGGATCCATCTTGACGGATGGAAAAGATGCTTATAGTGAGGAGGCCAC
CACCAACATCTGCGTGTTCGCGATGAACAGGTTGACAGAAGCCCCACCGGCTCGGGAGTGACAGCCAGA
ATTGCTGTCAGTATCATAAGGGGCTCCTGCAGCTGAACCAAGAGCCTTCAAAAGCAGCGCAACTG
GCTCGGTGTTACAGGCTGTGCCGTGAGGGAAGCAAAGTGTGGAGATTTCAAAGCTGTATAGTGGAAAT
TGCAGGACAAGCCATTACACAGGGACAGCAAACCTTGACAGTGGAAAGATGGTGACCCACTAAGGGATGGC
TTTCTTCTCAAG

ACGCGTACGCGGCCGCTCGAG - GFP Tag - GTTTAA



[View online »](#)

Protein Sequence: >MG205382 representing NM_026038
Red=Cloning site Green=Tags(s)

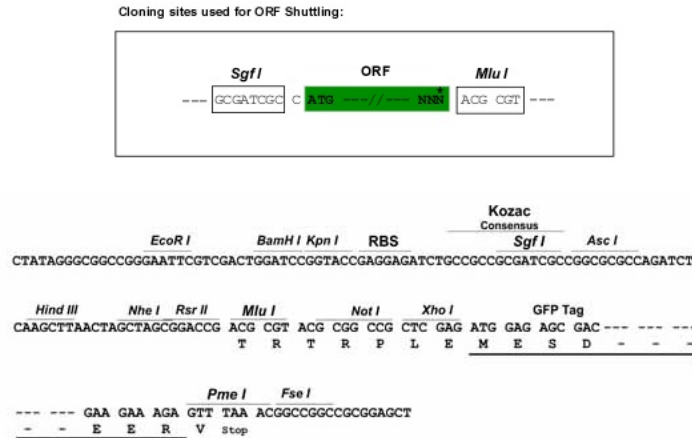
MEALAVTRLPPHDSRTPALSVVDMHTGGEPLRIVHAGCPEVAGPTLLAKRRYMRQHLDYIRRRLVFEP
 GHRDMYGAILMPSELPAHLGLVFLHNEGYSMCGHAVLALGRFALDFGLVPAPPEGAREAQVNIHCPCG
 LVTAFVECEGGRSCGPVRFHVSVPFVLAASDLTDVDPGHGKVLVDIAYGGAFYAFVSAEKLGLDVCSAKTR
 DLVDAASALTGAVKAQFKINHPESEDLGFLYGSILTDGKDAYSEEATTNICVFADQVDRSPTGSGVTAR
 IALQYHKGLLQLNQTRAFKSSATGSVFTGCAVREAKCGDFKAVIVEVAGQAHYGTANLTVEDGDPLRDG
 FLLK

TRTRPLE - GFP Tag - V

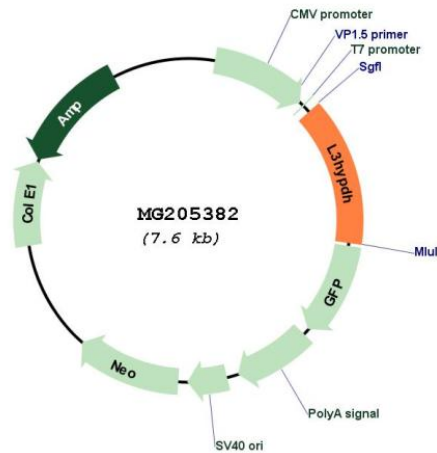
Restriction Sites:

SgfI-MluI

Cloning Scheme:



Plasmid Map:



ACCN:

NM_026038

ORF Size:	1062 bp
OTI Disclaimer:	The molecular sequence of this clone aligns with the gene accession number as a point of reference only. However, individual transcript sequences of the same gene can differ through naturally occurring variations (e.g. polymorphisms), each with its own valid existence. This clone is substantially in agreement with the reference, but a complete review of all prevailing variants is recommended prior to use. More info
OTI Annotation:	This clone was engineered to express the complete ORF with an expression tag. Expression varies depending on the nature of the gene.
Components:	The ORF clone is ion-exchange column purified and shipped in a 2D barcoded Matrix tube containing 10ug of transfection-ready, dried plasmid DNA (reconstitute with 100 ul of water).
Reconstitution Method:	<ol style="list-style-type: none">1. Centrifuge at 5,000xg for 5min.2. Carefully open the tube and add 100ul of sterile water to dissolve the DNA.3. Close the tube and incubate for 10 minutes at room temperature.4. Briefly vortex the tube and then do a quick spin (less than 5000xg) to concentrate the liquid at the bottom.5. Store the suspended plasmid at -20°C. The DNA is stable for at least one year from date of shipping when stored at -20°C.
RefSeq:	NM_026038.1 , NP_080314.1
RefSeq Size:	1706 bp
RefSeq ORF:	1065 bp
Locus ID:	67217
UniProt ID:	Q9CXA2
Cytogenetics:	12 C3
Gene Summary:	Catalyzes the dehydration of trans-3-hydroxy-L-proline to delta-1-pyrroline-2-carboxylate (Pyr2C).[UniProtKB/Swiss-Prot Function]