

Product datasheet for **MG205319**

Sae1 (NM_019748) Mouse Tagged ORF Clone

Product data:

Product Type:	Expression Plasmids
Product Name:	Sae1 (NM_019748) Mouse Tagged ORF Clone
Tag:	TurboGFP
Symbol:	Sae1
Synonyms:	2400010M20Rik; 2610044L12Rik; AL033372; AOS1; AW743391; D7Ertd177e; HSPC140; Sua1; Uble1a
Mammalian Cell Selection:	Neomycin
Vector:	pCMV6-AC-GFP (PS100010)
E. coli Selection:	Ampicillin (100 ug/mL)
ORF Nucleotide Sequence:	>MG205319 representing NM_019748 Red=Cloning site Blue=ORF Green=Tags(s)

TTTTGTAATACGACTCACTATAGGGCGGCCGGAATTCGTCGACTGGATCCGGTACCGAGGAGATCTGCC
GCC**GCGATCGCC**

ATGGTAGAGAAGGAGGAGGCTGGCGGCGCGCGCGGTGGCATCAGCGAGGAGGAGGCAGCGCAGTATG
ACCGACAGATCCGCCTGTGGGACTGGAGGCCAGAAGCGGCTTCGAGCTTCCCGGTGCTGATTGTTGG
CATGAAAGGACTTGGAGCTGAAATTGCCAAGAATCTTATCCTGGCAGGAGTCAAAGGGCTCACCATGCTG
GACCACGAACAGGTATCTCCAGAAGACCCTGGAGCTCAGTTCTTGATTGACTGGGTCTGTGGCCGCA
ATAGGGCCGAGGCCTCTTTGGAACGAGCCAGAATCTCAATCCCATGGTGGATGTAAGGTGGACTGTA
GGATGTAGAGAAGAAGCCAGAGTCCTTCTCACGAAGTTTGTGCGGTGTGCCTGACTTGTCTCCAGA
GATGTCATCATTAAAGTCGACCAGATCTGTACAGAAACAGCATTAAAGTTCTTACAGGAGATGTCTTTG
GGTACCATGGGTACACCTTTGCGAATCTTGAGAGCATGAATTTGTAGAAGAGAAAACAAAGTTGCCAA
AGTAAGCCAAGGAGTGAAGATGGACCTGAGGCCAAGAGAGCAAAGCTTGATTATCAGAGACAACCATG
GTCAAAAAGAAAGTGCTTTTTGCCCCTGTAAAAGAGGCGCTAGAAGTGGACTGGAGTGGAGAGAAAGCCA
AGGCTGCCCTGAAGCGTACTGCCCCGACTACTTTCTGCTGCAAGTGTGCTGAAATTCGCACAGATAA
AGGAGAGATCCGACTTCTGAGAGCTACAAGGAGGATGCGGAGCTGTGCTGCAGATACGGAATGACGTG
TTGACTCCCTGGGCATCAGTCTGACCTGCTTCCCGATGACTTTGTGAGTACTGCTTCTCTGAGATGG
CCCCAGTATGTGCTGTGGTTGGAGGGATCTTGGCACAGGAAATTTGAAGGCCCTGTCTCAAAGGGACCC
TCCTCACAACTTCTTCTTCTTCGACGGCATGAAGGGGAGTGAATTTGGAGTGCCTTGGTCCCCAG

ACGCGTACGCGGCCGCTCGAG - GFP Tag - GTTTAA



[View online »](#)

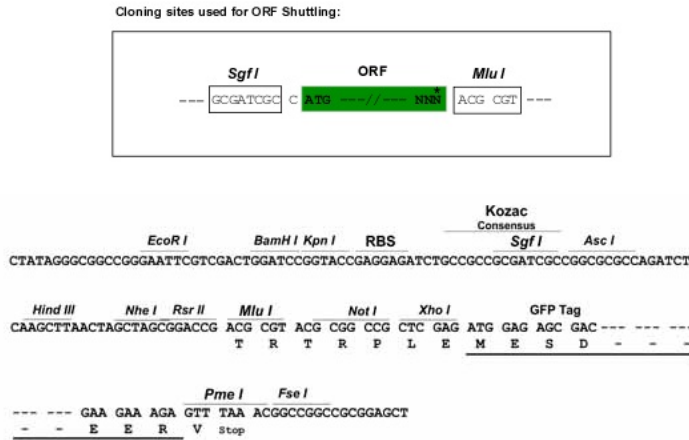
Protein Sequence: >MG205319 representing NM_019748
 Red=Cloning site Green=Tags(s)

MVEKEEAGGGGGGISEEEAAQYDRQIRLWGLEAQKRLRASRVLIVGMKGLGAEIAKNLILAGVKGLTML
 DHEQVSPEDPGAQFLIQTGSVGRNRAEASLERAQNLNPMVDVKVDTEDVEKKPESFFTKFDAVCLTCCSR
 DVIKVDQICHRNSIKFFITGDFVGYHGYTFANLGEHEFVEEKTKVAKVSQGVEDGPEAKRAKLDSSSETTM
 VKKKVLFPCVKEALEVDWSGEKAKAALKRTAPDYFLLQVLLKFRDVKGRDPTSESYKEDAELLQIRNDV
 FDSLGISPDLLPDDFVRYCFSEMAPVCAVVGILAQEIVKALSQRDPPHNNFFFDGMKSGSIVECLGPQ

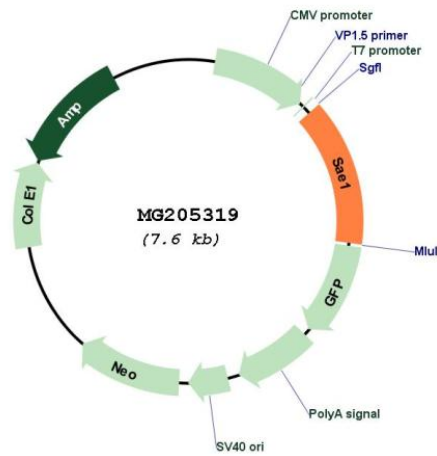
TRTRPLE - GFP Tag - V

Restriction Sites: SgfI-MluI

Cloning Scheme:



Plasmid Map:



ACCN: NM_019748

ORF Size:	1050 bp
OTI Disclaimer:	The molecular sequence of this clone aligns with the gene accession number as a point of reference only. However, individual transcript sequences of the same gene can differ through naturally occurring variations (e.g. polymorphisms), each with its own valid existence. This clone is substantially in agreement with the reference, but a complete review of all prevailing variants is recommended prior to use. More info
OTI Annotation:	This clone was engineered to express the complete ORF with an expression tag. Expression varies depending on the nature of the gene.
Components:	The ORF clone is ion-exchange column purified and shipped in a 2D barcoded Matrix tube containing 10ug of transfection-ready, dried plasmid DNA (reconstitute with 100 ul of water).
Reconstitution Method:	<ol style="list-style-type: none">1. Centrifuge at 5,000xg for 5min.2. Carefully open the tube and add 100ul of sterile water to dissolve the DNA.3. Close the tube and incubate for 10 minutes at room temperature.4. Briefly vortex the tube and then do a quick spin (less than 5000xg) to concentrate the liquid at the bottom.5. Store the suspended plasmid at -20°C. The DNA is stable for at least one year from date of shipping when stored at -20°C.
RefSeq:	NM_019748.3
RefSeq Size:	1871 bp
RefSeq ORF:	1053 bp
Locus ID:	56459
UniProt ID:	Q9R1T2
Cytogenetics:	7 8.88 cM
Gene Summary:	The heterodimer acts as an E1 ligase for SUMO1, SUMO2, SUMO3, and probably SUMO4. It mediates ATP-dependent activation of SUMO proteins followed by formation of a thioester bond between a SUMO protein and a conserved active site cysteine residue on UBA2/SAE2 (By similarity).[UniProtKB/Swiss-Prot Function]