

## Product datasheet for **MG205292**

### Mfap3 (NM\_145426) Mouse Tagged ORF Clone

#### Product data:

Product Type:	Expression Plasmids
Product Name:	Mfap3 (NM_145426) Mouse Tagged ORF Clone
Tag:	TurboGFP
Symbol:	Mfap3
Synonyms:	2610509F16Rik; 2700079M14Rik; AW536327
Mammalian Cell Selection:	Neomycin
Vector:	pCMV6-AC-GFP (PS100010)
E. coli Selection:	Ampicillin (100 ug/mL)
ORF Nucleotide Sequence:	>MG205292 representing NM_145426 Red=Cloning site Blue=ORF Green=Tags(s)

TTTTGTAATACGACTCACTATAGGGCGGCCGGAATTCGTCGACTGGATCCGGTACCGAGGAGATCTGCC  
GCC**CGATCGCC**

ATGAAGCTGCATCACTGCCTGTCCTTCTACTGGTGGTCACTCTTGTCAGCTGCTCTGAGTTTGAAG  
ATGTGGCTCCACTGGGAGCGAATCAAAGTTCTTACAATGCATCATTTCTCCAAGCTTTGAACTCTCAGC  
AGGTTCTACTCGGGTATGATGTCATTATAGTCAAAGAGGGAACAAATGTTTCATTGGAGTGTCTTCTC  
ACGGTGGATCAGTATGGAGAAGTCCACTGGTACAACCAAAGGACAGCAGCTGCACAGCAGAGGTGGAA  
AATGGTTGGTTTCTGATAACTTCTAAATATCACCAGCGTAGCCTTTGATGACCGTGGGCTCTATACATG  
TATCATCACTTCTCCAGCTCGTGCCTCCTATTCGGTACCCCTCCGTGTGATCTTCACCTCTGGAGACATG  
AGTGTCTACTATATGGTTGTCTGCCTGATCGCCTTCACAATCACACTCATCCTGAACGCTCACTCGGCTGT  
GCCTGATGAGCACCCACCTCCGCAAGACTGAGAAGGCCATCAATGAGTTCTTCAGGACCGAGGGGCTGA  
GAAACTCCAGAAGGCCTTTGAGATTGCCAAGCGCATCCCCATCATCACCTCAGCCAAAACCTCGAGCTG  
GCCAAGGTCACACAGTTTAAGACCATGGAGTTTGCCCGATATATTGAGGAACTGGCCAGAAGTGTCCCTC  
TCCCGCCCTTATTCTGAACTGCCGGCCTTTGTTGAGGAAATGTTTGAAGCTGTCCGAGTGGATGACCC  
TGATGACATGGGAGAGAGAATTAAGAGAGACCTGCTTTGGACGCTCAAAGTGGCATCTATGTGATTAAC  
CCAGAGTAGGCCGAAGCAACTCTCTGGTGGAGATTGAGTGTGTTCTCTAAGTGGCAAGGGCAGG  
AGATAGCAGTACAGGTGTCTGTCCACCTTCAGTCAGAGACCAAAGCATTGGGACAGATTCTCAAGACAG  
TAGTCATTTAGCCACCCAGTACCCTGCATCTGCAGAGGGCAGCATTACCACAGAGTGAGCATA

**ACGCGT**ACGCGGCCGCTCGAG - GFP Tag - GTTTAA



[View online »](#)

**Protein Sequence:** >MG205292 representing NM\_145426  
 Red=Cloning site Green=Tags(s)

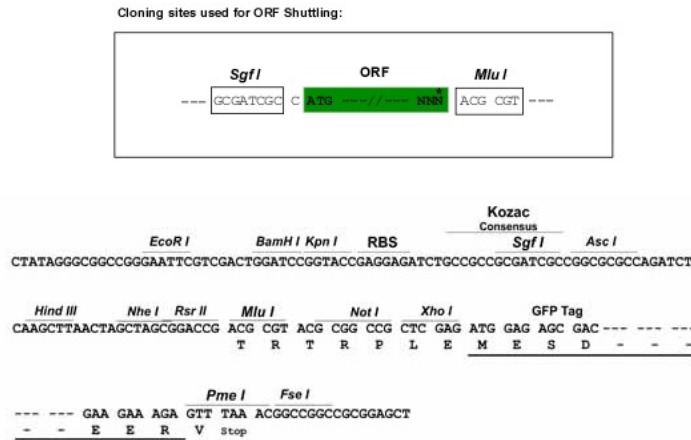
MKLHHCLSFLLVVTLVPAALSLEDVAPLGANQSSYNASFLPSFELSAGSYSGDDVIIVKEGTNVSLECLL  
 TVDQYGEVHWYNSKGQQLHSRGGKWLVDNFLNITSVAFDDRGLYTCIITSPARASYSVTLRVIFTSGDM  
 SVYYMVVCLIAFTITLILNVTRLCLMSTHLRKEKAINFEFFRTEGAELQKAFEIAKRIPITSAKTLEL  
 AKVTQFKTMEFARYIEELARSVPLPPLILNCRAFVEEMFEAVRVDDPDDMGERIKERPALDAQSGIYVIN  
 PELGRSNPPGGSDDDGSLSEQQEIAVQVSVHLQSETKSIGTDSQDSSHFSPPSDPASAEGSIHHRVSI

TRTRPLE - GFP Tag - V

**Chromatograms:** [https://cdn.origene.com/chromatograms/ja1833\\_f07.zip](https://cdn.origene.com/chromatograms/ja1833_f07.zip)

**Restriction Sites:** SgfI-MluI

**Cloning Scheme:**



**ACCN:** NM\_145426

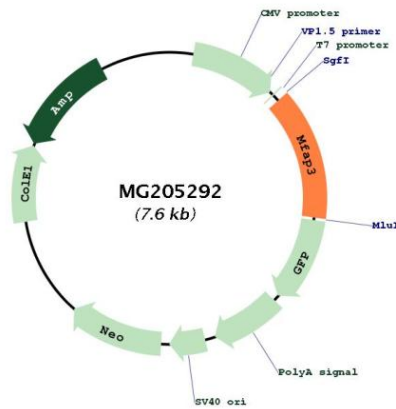
**ORF Size:** 1047 bp

**OTI Disclaimer:** Due to the inherent nature of this plasmid, standard methods to replicate additional amounts of DNA in E. coli are highly likely to result in mutations and/or rearrangements. Therefore, OriGene does not guarantee the capability to replicate this plasmid DNA. Additional amounts of DNA can be purchased from OriGene with batch-specific, full-sequence verification at a reduced cost. Please contact our customer care team at [custsupport@origene.com](mailto:custsupport@origene.com) or by calling 301.340.3188 option 3 for pricing and delivery.

The molecular sequence of this clone aligns with the gene accession number as a point of reference only. However, individual transcript sequences of the same gene can differ through naturally occurring variations (e.g. polymorphisms), each with its own valid existence. This clone is substantially in agreement with the reference, but a complete review of all prevailing variants is recommended prior to use. [More info](#)

- OTI Annotation:** This clone was engineered to express the complete ORF with an expression tag. Expression varies depending on the nature of the gene.
- Components:** The ORF clone is ion-exchange column purified and shipped in a 2D barcoded Matrix tube containing 10ug of transfection-ready, dried plasmid DNA (reconstitute with 100 ul of water).
- Reconstitution Method:**
1. Centrifuge at 5,000xg for 5min.
  2. Carefully open the tube and add 100ul of sterile water to dissolve the DNA.
  3. Close the tube and incubate for 10 minutes at room temperature.
  4. Briefly vortex the tube and then do a quick spin (less than 5000xg) to concentrate the liquid at the bottom.
  5. Store the suspended plasmid at -20°C. The DNA is stable for at least one year from date of shipping when stored at -20°C.
- RefSeq:** [NM\\_145426.1](#)
- RefSeq Size:** 4864 bp
- RefSeq ORF:** 1050 bp
- Locus ID:** 216760
- UniProt ID:** [Q922T2](#)
- Cytogenetics:** 11 B1.3
- Gene Summary:** Component of the elastin-associated microfibrils.[UniProtKB/Swiss-Prot Function]

**Product images:**



Circular map for MG205292