

Product datasheet for **MG205275**

Irf2 (NM_008391) Mouse Tagged ORF Clone

Product data:

Product Type:	Expression Plasmids
Product Name:	Irf2 (NM_008391) Mouse Tagged ORF Clone
Tag:	TurboGFP
Symbol:	Irf2
Synonyms:	9830146E22Rik; AI646973; Irf-2
Mammalian Cell Selection:	Neomycin
Vector:	pCMV6-AC-GFP (PS100010)
E. coli Selection:	Ampicillin (100 ug/mL)
ORF Nucleotide Sequence:	>MG205275 representing NM_008391 Red=Cloning site Blue=ORF Green=Tags(s)

TTTTGTAATACGACTCACTATAGGGCGGCCGGAATTCGTCGACTGGATCCGGTACCGAGGAGATCTGCCGCC**CGATCGCC**

ATGCCGGTGGAAACGGATGCGAATGCGCCCGTGGCTGGAGGAGCAGATAAATTCCAATACGATACCAGGGC
TAAAGTGGCTGAACAAGGAGAAGAAGATTTCCAGATCCCCTGGATGCATGCGGCTCGGCACGGATGGGA
CGTGGAAAAGGATGCTCCGCTCTTCAGAACTGGGCGATCCATACAGGAAAGCATCAACCAGGAATAGAT
AAACCAGATCCAAAACATGGAAAGCAAATTTTCGATGTGCCATGAATTCCTGCCGACATTGAGGAAG
TGAAGGACAGAAGCATAAAGAAAGGAAACAACGCCTTCAGAGTCTACCGGATGCTGCCCTTATCCGAACG
ACCTTCCAAGAAAGGAAAGAAACCAAGACAGAAAAGAAGAGAGATTAAGCACATCAAGCAAGAACCA
GTTGAGTCATCTTTGGGCTTAGTAATGGAGTAAGTGGCTTTTCTCCTGAGTATGCGGTCCTGACTTCAG
CTATAAAAAATGAAGTGGATAGTACGGTGAACATCATAGTTGTAGGACAGTCCCCTCTGGACAGCAACAT
TGAAGATCAAGAGATCGTCACTAACCCGCCAGACATCTGCCAGGTTGTAGAAGTGACCACTGAGAGTGAT
GACCAGCCAGTCAGCATGAGTGAAGTCTACCTCTACAGATTTCTCCTGTGTCTTCTACGCAGAAAAGCG
AACTACCGACAGTGTGGCCAGTGAAGAGAACGCAGAGGGGAGACCACACTGGAGGAAGAGGAGCAT
CGAAGGCAAGCAGTACCTCAGCAACATGGGACACGGAACACCTATCTGCTGCCAGCATGGCGACCTTT
GTCACCTCCAACAAGCCAGATCTGCAGGTCACCATCAAAGAGGATAGCTGTCCGATGCCTTACAACAGCT
CCTGGCCCCCATTACAGACCTTCCCCTTCTGCCCCAGTGACCCCCAGCCAGCAGCATCGGCCAGA
CCGGGAGACCCGGCCAGTGTATCAAGAAGACATCTGATATCACCCAGGCCCGTCAAGAGCTGT

ACGCGTACGCGGCCGCTCGAG - GFP Tag - GTTTAA



[View online »](#)

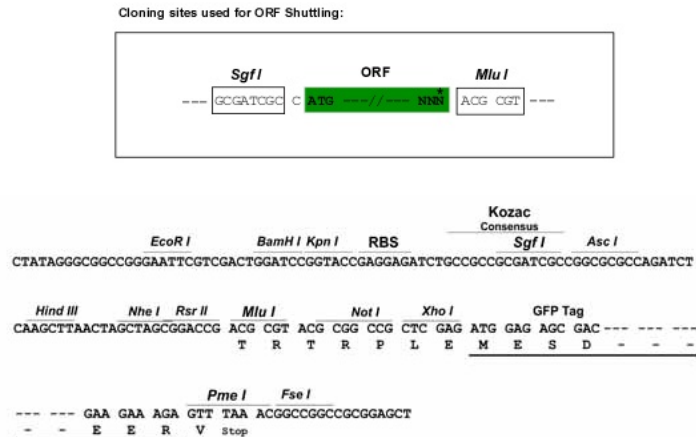
Protein Sequence: >MG205275 representing NM_008391
 Red=Cloning site Green=Tags(s)

MPVERMRMRPWLEEQINSNTIPLKWLNKEKKIFQIPWMHAARHGWDVEKDAPLFRNWAHTGKHQPGID
 KPDPKTWKANFRFCAMNSLPDIEEVKDRSIKKGNNAFRVYRMLPLSERPSKKGKKPKTEKEERVKHIKQEP
 VESSLGLSNGVSGFSPEYAVL TSAIKNEVDSTVNIIVVGQSHLDSNIEDQEIVTNPPDICQVVEVTTESD
 DQPVSMSELYPLQISPVSSYAESSETTDSVASDEENAEGRPHWRKRSIEGKQYLSNMGTRNTYLLPSMATF
 VTSNKPDLQVTIKEDSCMPYNSSWPPFDLPLPAPVPTPSSSRPDRETRASVIKKTSDITQARVKSC

TRTRPLE - GFP Tag - V

Restriction Sites: SgfI-MluI

Cloning Scheme:



ACCN: NM_008391

ORF Size: 1047 bp

OTI Disclaimer: The molecular sequence of this clone aligns with the gene accession number as a point of reference only. However, individual transcript sequences of the same gene can differ through naturally occurring variations (e.g. polymorphisms), each with its own valid existence. This clone is substantially in agreement with the reference, but a complete review of all prevailing variants is recommended prior to use. [More info](#)

OTI Annotation: This clone was engineered to express the complete ORF with an expression tag. Expression varies depending on the nature of the gene.

Components: The ORF clone is ion-exchange column purified and shipped in a 2D barcoded Matrix tube containing 10ug of transfection-ready, dried plasmid DNA (reconstitute with 100 ul of water).

Reconstitution Method:

1. Centrifuge at 5,000xg for 5min.
2. Carefully open the tube and add 100ul of sterile water to dissolve the DNA.
3. Close the tube and incubate for 10 minutes at room temperature.
4. Briefly vortex the tube and then do a quick spin (less than 5000xg) to concentrate the liquid at the bottom.
5. Store the suspended plasmid at -20°C. The DNA is stable for at least one year from date of shipping when stored at -20°C.

RefSeq: [NM_008391.4](#), [NP_032417.3](#)

RefSeq Size: 2484 bp

RefSeq ORF: 1050 bp

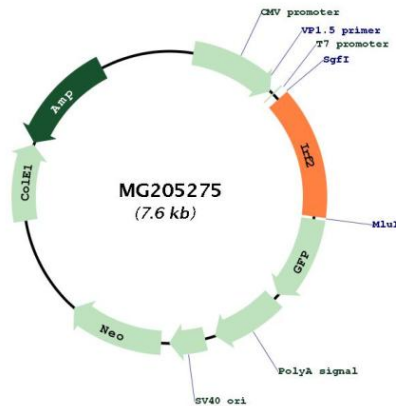
Locus ID: 16363

UniProt ID: [P23906](#)

Cytogenetics: 8 B1.1

Gene Summary: Specifically binds to the upstream regulatory region of type I IFN and IFN-inducible MHC class I genes (the interferon consensus sequence (ICS)) and represses those genes. Also acts as an activator for several genes including H4 and IL7. Constitutively binds to the ISRE promoter to activate IL7. Involved in cell cycle regulation through binding the site II (HiNF-M) promoter region of H4 and activating transcription during cell growth. Antagonizes IRF1 transcriptional activation.[UniProtKB/Swiss-Prot Function]

Product images:



Circular map for MG205275