

Product datasheet for **MG205256**

Dsn1 (NM_025853) Mouse Tagged ORF Clone

Product data:

Product Type: Expression Plasmids
Product Name: Dsn1 (NM_025853) Mouse Tagged ORF Clone
Tag: TurboGFP
Symbol: Dsn1
Synonyms: 1700022L09Rik; AW552447
Mammalian Cell Selection: Neomycin
Vector: pCMV6-AC-GFP (PS100010)
E. coli Selection: Ampicillin (100 ug/mL)
ORF Nucleotide Sequence: >MG205256 representing NM_025853
 Red=Cloning site Blue=ORF Green=Tags(s)

TTTTGTAATACGACTCACTATAGGGCGGCCGGAATTCGTCGACTGGATCCGGTACCGAGGAGATCTGCC
 GCC**CGATCGCC**

ATGACGTCAGTGACCAGATCAGAAGACCAGGAACCCACGATGTCCGAGACTCAGGATCGTCCATTGCAGC
 CAAGTCTCAAGCCTTTGGAAGCATTGCCTCAATCCTCTGCCTACCAGGAAATGATGACGCAAGGCGTTTC
 AGAGGAAAAAACACCTTGGCTCGAACCTGGAGAGGGGAAAGTTGTGGTGCCGACCACCAGGAGGGA
 TCTCAGTTGAGGTCCTTTCATTTGTCCCCTCAAGAACAGTCTATCCGTCCTCAAGACAGAAGGCAGTCTC
 GGAGACGAGCAAGCATGAAAGAAGTAAACCGCGGAAGTCAATTGGCTCCCTTCCACCCAGGCATCACAGA
 GCTCTGCAGGTCCATCAGTGTGAAGTTAGCCCAGAGCCAACGGCTGGGCGCCCTCCTGCTCTCCAGCTTC
 CAGTTCTCTGTTGAAAACTTGAACCTTCTTAAAGAACACTAAGGACTTCAGCCTTGAATGTTTTAGAG
 CGAAAGCATCTTCTCTCTCTGAAGAATTGAAACATTTTACAGACAGGCTGGGAAATGATGGAACACTGCA
 AAAATGTTTTGTTGAAGATTCAAAAGAAAAAGCAGCAGATTTTTCACTGGAAGCATCAGTAGCTGAGGTG
 AAAGAATATAAACAAGTTTTCTTTAGAGCGTCAGGCCGTTGGATCGGCTCTTACTGCAGTACCAGAACG
 AGGTTCCACCTGAAGAGATGCCAGAGGATCAACTGAAACCAGAATCACTGAAGTCAAGGTGGATCCTGC
 AGCCTACCTCAGGTCTTCCAGAAGGAAGTTCTTAGCACGAAGCCAGACTACCAGAGAATAGTACAAGAG
 CAGAACCAAGTCTTTGCCTACGTGGAGTTAGTGATGGATGAGCTCCAAGGATCAGTGAAGCAGCTGCAAG
 CCCTCATGGATGAGAGTACTCAGTACCTCCAGAAGGTGTAGTACAGCTCAAGAAGAGAAGTATGGACCA
 ATTAGACTCTTACCTGCTCGGAAACTGCTCAAGCTCCCCTCCAGAGCTCACCTTCCACGCAG

ACGCGTACGCGGCCGCTCGAG - GFP Tag - GTTTAA



[View online »](#)

Protein Sequence: >MG205256 representing NM_025853
 Red=Cloning site Green=Tags(s)

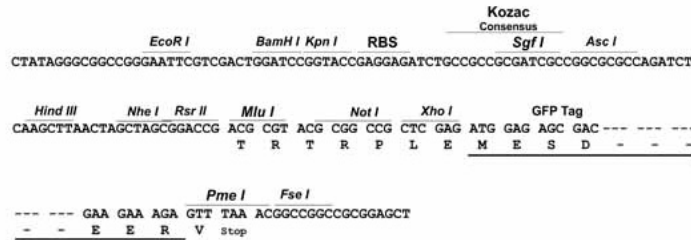
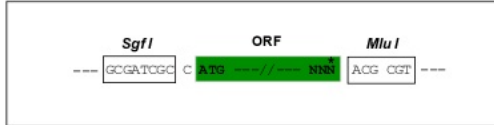
MTSVTRSEDQEPTMSETQDRPLQPSLKPLEALPQSSAYQEMMTQGVSEEKNHLGSPGEGESGADHQEG
 SQLRSFHLSPQEQSIRPQDRRQSWRRASMKEVNRKSLAPFHPGITELCRSISVKLAQSQRGALLLSSF
 QFSVEKLEPFLKNTKDFLECFRAKASSLSEELKHFTDRLGNDGTLQKCFVEDSKEKAADF SLEASVAEV
 KEYITKFSLERQAWDRLLLQYQNEVPPEEMPRGSTETRI TEVKVDPAAAYLRSSQKEVLSTKPDYQRIVQD
 QNQVFAYVELVMDELQGSYKQLQALMDESTQYLQKVSVQLKKRSMQDL DSSPARKLLKPLQSSPSTQ

TRTRPLE - GFP Tag - V

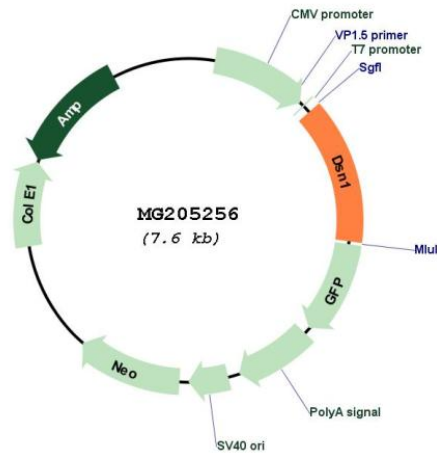
Restriction Sites: SgfI-MluI

Cloning Scheme:

Cloning sites used for ORF Shuttling:



Plasmid Map:



ACCN: NM_025853

ORF Size: 1044 bp

OTI Disclaimer:	The molecular sequence of this clone aligns with the gene accession number as a point of reference only. However, individual transcript sequences of the same gene can differ through naturally occurring variations (e.g. polymorphisms), each with its own valid existence. This clone is substantially in agreement with the reference, but a complete review of all prevailing variants is recommended prior to use. More info
OTI Annotation:	This clone was engineered to express the complete ORF with an expression tag. Expression varies depending on the nature of the gene.
Components:	The ORF clone is ion-exchange column purified and shipped in a 2D barcoded Matrix tube containing 10ug of transfection-ready, dried plasmid DNA (reconstitute with 100 ul of water).
Reconstitution Method:	<ol style="list-style-type: none">1. Centrifuge at 5,000xg for 5min.2. Carefully open the tube and add 100ul of sterile water to dissolve the DNA.3. Close the tube and incubate for 10 minutes at room temperature.4. Briefly vortex the tube and then do a quick spin (less than 5000xg) to concentrate the liquid at the bottom.5. Store the suspended plasmid at -20°C. The DNA is stable for at least one year from date of shipping when stored at -20°C.
RefSeq:	NM_025853.3
RefSeq Size:	2082 bp
RefSeq ORF:	1047 bp
Locus ID:	66934
UniProt ID:	Q9CYC5
Cytogenetics:	2 H1
Gene Summary:	Part of the MIS12 complex which is required for normal chromosome alignment and segregation and kinetochore formation during mitosis.[UniProtKB/Swiss-Prot Function]