

## Product datasheet for **MG205231**

### Yipf3 (NM\_145353) Mouse Tagged ORF Clone

#### Product data:

Product Type:	Expression Plasmids
Product Name:	Yipf3 (NM_145353) Mouse Tagged ORF Clone
Tag:	TurboGFP
Symbol:	Yipf3
Synonyms:	C6orf109; D17Wsu94e; KLIP1
Mammalian Cell Selection:	Neomycin
Vector:	pCMV6-AC-GFP (PS100010)
E. coli Selection:	Ampicillin (100 ug/mL)
ORF Nucleotide Sequence:	>MG205231 representing NM_145353 Red=Cloning site Blue=ORF Green=Tags(s)

TTTTGTAATACGACTCACTATAGGGCGGCCGGAATTCGTCGACTGGATCCGGTACCGAGGAGATCTGCC  
GCC**CGATCGCC**

ATGGCGACTCCGGCGGCCGCGCCAGCGGCGTCCGAAATGGTGCTGGCCCGGAATGGGGAGGCTTCGAAG  
AAAACATCCAGGGTGGGGTTCCGGCTGTGATTGATATGGAGAACATGGACGATACCTCAGGCTCCAGCTT  
CGAGGACATGGGTGAGCTGCATCAGCGCCTGCGGGAGGAAGAAGTAGATGCTGATGCAGCTGCTGCAGAA  
GAAGAGGATGGGGAGTTTCTTGGCATGAAAGGCTTTAAGGGACAACCTGAGCCGGCAGGTAGCAGATCAGA  
TGTGGCAGGCAGGAAGAGACAGGCTTCCAGGGCCTTCAGCTTGTATGCCAACATTGACATCCTCAGACC  
CTACTTTGATGTGGAGCCTGCCAGGTCCGAAGCAGGCTCCTGGAGTCCATGATCCCTATCAAGATGGTC  
AACTTCCCCCAGAAAGTCGCGGGCGAGCTCTACGGACCGCTCATGCTGGTCTTCACACTGGTGGCCATCC  
TCCTGCATGGAATGAAGACTTCTGACACCATATCCGGGAGGGCACCCCTCATGGGCACAGCCATAGGCAC  
CTGCTTTGGTAAGTGGTGGGTCTCTGTCCTTCAATTTCTTGGCTACCTGTGTAACGCCAGATC  
ACCATGTACAGATGTTGGCACTGCTGGGCTACGGCCTTTCGGGCACTGCATAGTCTGTTTATCACCT  
ATAACATCCACCTTCATGCCCTTCTACCTCTTCTGGCTGCTGGTGGGTGGGCTCTCTACCCTGCCAT  
GGTGGCAGTGTGGTGTGCGGACTGTGGGCCCTACGCAGCGGCTGCTGCTCTGTGGCAGCTGGCTGCC  
CTGCACATGCTCTTCTGCTCTATCTGCACTTCGCCTACCACAAAGTGGTGGAGGGGATCTGGACACCC  
TGGAGGGCCCAACATCCACCCATGCAGAGGGTCCCCAGAGACATCCCCGCTGTGCTCCCTGCTGCCAG  
GCTGCCCGTCGCTGTGGTCAATGCTACCGCCAAGGCAATAGCAGTGACTCTGCAGTCACAT

**ACGCGT**ACGCGGCCGCTCGAG - GFP Tag - GTTTAA



[View online »](#)

**Protein Sequence:** >MG205231 representing NM\_145353  
Red=Cloning site Green=Tags(s)

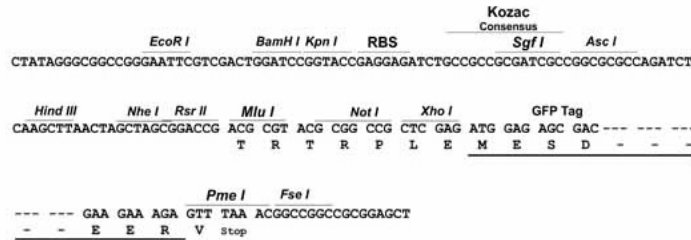
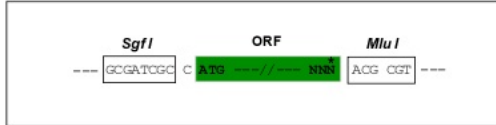
MATPAAPASGVRNGAGPEWGGFEENIQGGGSAVIDMENMDDTSGSSFEDMGELHQRLREEEVDADAAAAE  
 EEDGEFLGMKGFKGQLSRQVADQMWQAGKRQASRAFSLYANIDILRPYFDVEPAQVRSRLLESMPKIMV  
 NFPQKVAGELYGPLMLVFTLVAILLHGMKTSDTIIREGTLMGTAIGTCFGYWLGVSSFIYFLAYLCNAQI  
 TMLQMLALLGYGLFGHCIVLFFITYNIHLHALFYLFWLLVGLSTLRMVAVLVSRVTGPTQRLLLCGTLAA  
 LHMLFLLYLHFAYHKVVEGILDTELEPNIPPMQVRPRDIPAVLPAARLPVAVVNATAKAIAVTLQSH

TRTRPLE - GFP Tag - V

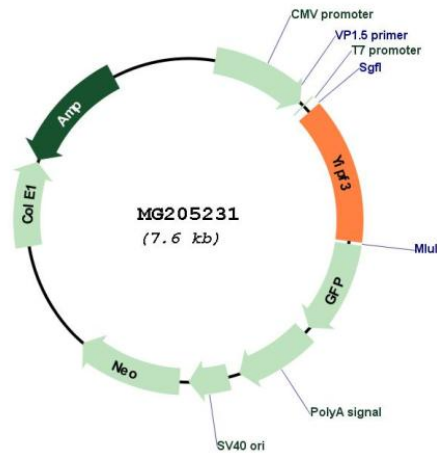
**Restriction Sites:** SgfI-MluI

**Cloning Scheme:**

Cloning sites used for ORF Shuttling:



**Plasmid Map:**



**ACCN:** NM\_145353

**ORF Size:** 1041 bp

<b>OTI Disclaimer:</b>	The molecular sequence of this clone aligns with the gene accession number as a point of reference only. However, individual transcript sequences of the same gene can differ through naturally occurring variations (e.g. polymorphisms), each with its own valid existence. This clone is substantially in agreement with the reference, but a complete review of all prevailing variants is recommended prior to use. <a href="#">More info</a>
<b>OTI Annotation:</b>	This clone was engineered to express the complete ORF with an expression tag. Expression varies depending on the nature of the gene.
<b>Components:</b>	The ORF clone is ion-exchange column purified and shipped in a 2D barcoded Matrix tube containing 10ug of transfection-ready, dried plasmid DNA (reconstitute with 100 ul of water).
<b>Reconstitution Method:</b>	<ol style="list-style-type: none"><li>1. Centrifuge at 5,000xg for 5min.</li><li>2. Carefully open the tube and add 100ul of sterile water to dissolve the DNA.</li><li>3. Close the tube and incubate for 10 minutes at room temperature.</li><li>4. Briefly vortex the tube and then do a quick spin (less than 5000xg) to concentrate the liquid at the bottom.</li><li>5. Store the suspended plasmid at -20°C. The DNA is stable for at least one year from date of shipping when stored at -20°C.</li></ol>
<b>RefSeq:</b>	<a href="#">NM_145353.1</a> , <a href="#">NP_663328.1</a>
<b>RefSeq Size:</b>	1522 bp
<b>RefSeq ORF:</b>	1044 bp
<b>Locus ID:</b>	28064
<b>UniProt ID:</b>	<a href="#">Q3UDR8</a>
<b>Cytogenetics:</b>	17 22.9 cM
<b>Gene Summary:</b>	Involved in the maintenance of the Golgi structure. May play a role in hematopoiesis (By similarity).[UniProtKB/Swiss-Prot Function]