

Product datasheet for **MG205177**

Cd2 (NM_013486) Mouse Tagged ORF Clone

Product data:

Product Type:	Expression Plasmids
Product Name:	Cd2 (NM_013486) Mouse Tagged ORF Clone
Tag:	TurboGFP
Symbol:	Cd2
Synonyms:	LFA-2; Ly-37; Ly37
Mammalian Cell Selection:	Neomycin
Vector:	pCMV6-AC-GFP (PS100010)
E. coli Selection:	Ampicillin (100 ug/mL)
ORF Nucleotide Sequence:	>MG205177 representing NM_013486 Red=Cloning site Blue=ORF Green=Tags(s)

TTTTGTAATACGACTCACTATAGGGCGGCCGGAATTCGTCGACTGGATCCGGTACCGAGGAGATCTGCC
GCC**CGATCGCC**

ATGAAATGTAATTCCTGGGTAGCTTCTTTCTGCTCTTCAGCCTTCCGGCAAAGGGCGGACTGCAGAG
ACAATGAGACCATCTGGGGTGTCTTGGGTCATGGCATCACCTGAACATCCCAACTTTCAAATGACTGA
TGATATTGATGAGGTGCGATGGGTAAGGAGGGGCACCCTGGTCGAGAGTTAAAAGGAAGAAGCCACCT
TTTTTGATATCAGAAACGTATGAGGTCTTAGCAAACGGATCCCTGAAGATAAAGAAGCCGATGATGAGAA
ACGACAGTGGCACCTATAATGTAATGGTGTATGGCACAATGGGATGACTAGGCTGGAGAAGGACCTGGA
CGTGAGGATTCTGGAGAGGGTCTCAAAGCCCATGATCCACTGGGAATGCCCAACAACCCCTGACCTGT
GCGGTCTTGCAAGGGACAGATTTTGAACCTGAAGCTGTATCAAGGGGAAACACTACTCAATAGTCTCCCC
AGAAGAACATGAGTTACCAGTGGACCAACCTGAACGCACCATTCAAGTGTGAGGCGATAAACCCGGTCAG
CAAGGAGTCTAAGATGGAAGTTGTTAACTGTCCAGAGAAAGGTCTGTCTTCTATGTACAGTGGGGGTC
GGTGCAGGAGGACTCCTCTTGGTGTCTTGGTGGCGCTTTTTATTTCTGTATCTGCAAGAGGAGAAAAC
GGAACAGGAGGAGAAAAGATGAAGAGCTGGAATAAAAGCTTCCAGAACAAGCACTGTGGAAGGGGCC
CAAGCCGCACTCAACCCAGCCGAGCAGCGCAGAATTCAGTGGCGCTCCAAGCTCCTCCTCCACCTGCC
CATCACCTCCAGACACCTGGCCATCGTCCCTTGCCTCCAGGCCACCGTACCCGTGAGCACCAGCAGAAGA
AGAGACCTCCTCCATCAGGCACACAGATTCAACAGCAGAAAGGCCCTCCTTTACCCAGACCCCGAGTTCA
GCCAAAACCTCCTGTGGGAGTGGAGATGGTGTTCCTGCTGCCGCCCTAAT

ACGCGTACGCGGCCGCTCGAG - GFP Tag - GTTTAA



[View online »](#)

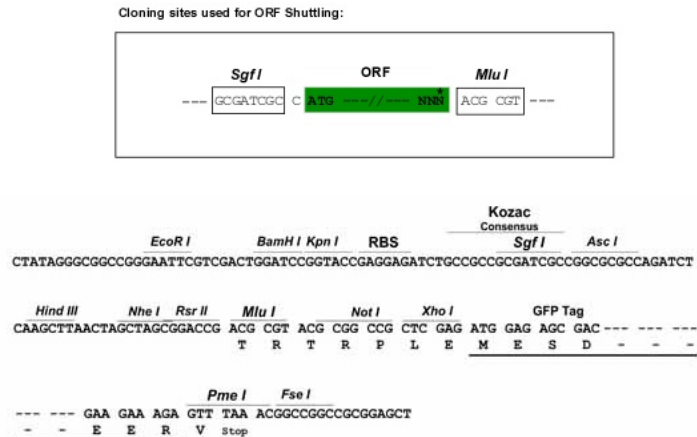
Protein Sequence: >MG205177 representing NM_013486
 Red=Cloning site Green=Tags(s)

MKCKFLGSFFLLFSLSGKGADCRDNETIWGVLGHGITLNI PNFMQMTDDIDEVRWVRRGTLVAEFKRKKPP
 FLISETYEVLANGSLKIKKPMRNDSTYNYVMVYGTNGMTRLEKDLVDVRLERVSKPMIHWECNPTLTLC
 AVLQGTDFELKLYQGETLLNSLPQKNMSYQWTNLNAPFKCEAINPVSKESKMEVNCPEKGLSFYVTVGV
 GAGGLLLVLLVALFIFCICKRRKRNRNRKDEELEIKASRTSTVERGPKPHSTPAAAAQNSVALQAPPPPG
 HHLQTPGHRPLPPGHRTRHQKKRPPPSGTQIHQKGPPLPRPRVQPKPPCGSGDGVSLPPPN

TRTRPLE - GFP Tag - V

Restriction Sites: SgfI-MluI

Cloning Scheme:



ACCN: NM_013486

ORF Size: 1032 bp

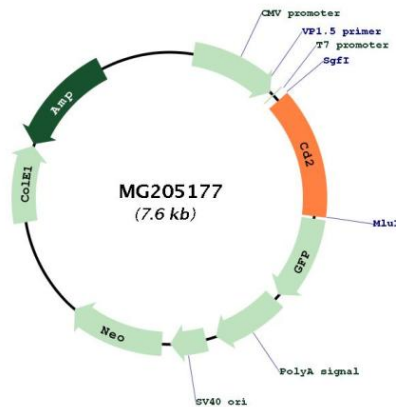
OTI Disclaimer: The molecular sequence of this clone aligns with the gene accession number as a point of reference only. However, individual transcript sequences of the same gene can differ through naturally occurring variations (e.g. polymorphisms), each with its own valid existence. This clone is substantially in agreement with the reference, but a complete review of all prevailing variants is recommended prior to use. [More info](#)

OTI Annotation: This clone was engineered to express the complete ORF with an expression tag. Expression varies depending on the nature of the gene.

Components: The ORF clone is ion-exchange column purified and shipped in a 2D barcoded Matrix tube containing 10ug of transfection-ready, dried plasmid DNA (reconstitute with 100 ul of water).

Reconstitution Method:	<ol style="list-style-type: none">1. Centrifuge at 5,000xg for 5min.2. Carefully open the tube and add 100ul of sterile water to dissolve the DNA.3. Close the tube and incubate for 10 minutes at room temperature.4. Briefly vortex the tube and then do a quick spin (less than 5000xg) to concentrate the liquid at the bottom.5. Store the suspended plasmid at -20°C. The DNA is stable for at least one year from date of shipping when stored at -20°C.
RefSeq:	NM_013486.2 , NP_038514.1
RefSeq Size:	1144 bp
RefSeq ORF:	1035 bp
Locus ID:	12481
UniProt ID:	P08920
Cytogenetics:	3 44.17 cM
Gene Summary:	CD2 interacts with lymphocyte function-associated antigen CD58 (LFA-3) and CD48/BCM1 to mediate adhesion between T-cells and other cell types. CD2 is implicated in the triggering of T-cells, the cytoplasmic domain is implicated in the signaling function.[UniProtKB/Swiss-Prot Function]

Product images:



Circular map for MG205177