

## Product datasheet for **MG205147**

### **Kif12 (BC022225) Mouse Tagged ORF Clone**

#### Product data:

Product Type: Expression Plasmids  
 Product Name: Kif12 (BC022225) Mouse Tagged ORF Clone  
 Tag: TurboGFP  
 Symbol: Kif12  
 Mammalian Cell Selection: Neomycin  
 Vector: pCMV6-AC-GFP (PS100010)  
 E. coli Selection: Ampicillin (100 ug/mL)  
 ORF Nucleotide Sequence: >MG205147 representing BC022225  
 Red=Cloning site Blue=ORF Green=Tags(s)

TTTTGTAATACGACTCACTATAGGGCGGCCGGGAATTCGTCGACTGGATCCGGTACCGAGGAGATCTGCC  
 GCC**CGATCGCC**

ATGGAGGAACGTGGGTCTCCCGATGGAGACCCAGCACGGAACCTGGAGCAAGGGCCAGAAGGATCAGAAA  
 CTCCCATTCAAGTGGTGTCTCAGGGTGCCTCCATGAGCACAGTGGAGCTGCGTCGAGGGGAGCAGAGTGC  
 ATTGCACTGTTTCGGGGACCAGGACTCTGCAGGTGAGCCCGCCGGGTGGAGGCCCGATGTGGCGTTCGCG  
 TTTGGCGCCGTACTGGACGGGGCGCGCACGCAGGAGGACGTGTTTCAGAGCTTTCGGGTGTGAAGCGCCTGG  
 GTGAGCTGGCGCTGCGCGGTTTTCTCCTGCACGGTCTTACGTTTTGGCCAGACTGGTCTGGGAAGACCTA  
 CACTCTGACTGGACCTCCTCCGCAGGGGAAGGGGTGCCCGTCCCCCAAGCCTGGCTGGCATCATGCAG  
 AGGACCTTCACCTGGCTATTAGATCGCGTGCAGCACCTGGATTCCCCGGTCACCTCCGAGCTTCTTACC  
 TGGAGATCTACAATGAGCAGTTTTGGGACTTGCTGAGTCTGGGGTCTCCACGGCCTCTGCCTGTTAGATG  
 GACCAAGGCACGAGGCTTCTATGTGGAACAGCTTCGGGTGGTGGAGTTTGGCAGTCTGGAGGCTTTGATG  
 GAGCTCCTGCAGATGGGTCTCAGCCGTCGTCGGAGCTCCTCACATACCTTGAACCAGGCCTCCAGCAGAA  
 GCCATGCCCTGCTTACACTCCACATCAGCCGCCAACTGTGAGTGTCCAGCCTGTGAAGGGCTGGCTCA  
 GGGATACCATTGAGACTCTCTGCCTTTGCATGGATAAAACAACCTGGCTCTGTTGGGTGTATGGGGAGG  
 AAACCTTTGACCTTGGACACTGGGACTTAAATACAGACAGCCCTCCCCAAGTCCCATCAAACCTGGT  
 TCACCACTCTCAGCAGGTACCTCCTGTGGACCTTGGGGAGCCCTGTTGGAGGGAAGCTGTGCTTTGTG  
 GATCTTGCAGGCAGTGAGAAAGTGGCAGCCACAGGATCCCAAGGGCAGC

**ACGCGT**ACGCGGCCGCTCGAG - GFP Tag - GTTTAA



[View online »](#)

**Protein Sequence:** >MG205147 representing BC022225  
 Red=Cloning site Green=Tags(s)

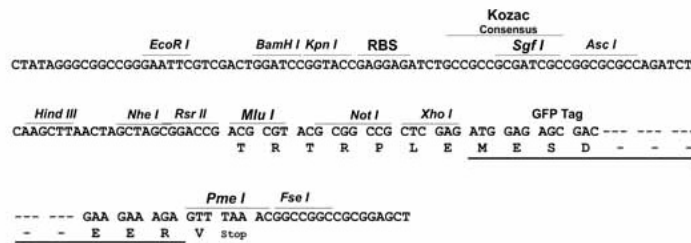
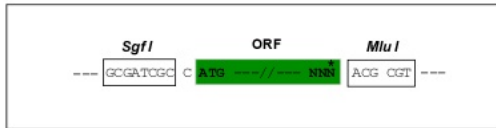
MEERGSPPDGPARNLEQGPEGSETPIQVVLVRPMSSTVELRRGEQSALHCSGTRTLQVSPPGGGPDVAFR  
 FGAVLDGARTQEDVFRACGVKRLGELALRGFSCTVFTFGQTGSGKTYTLTGPPPQGEVPPVPPSLAGIMQ  
 RTFTWLLDRVQHLDSPVTLRASYLEIYNEQVWDLNLSGSPRPLPVRWTKARGFYVEQLRVVEFGSLEALM  
 ELLQMLSRRRSSHTLNQASSRSHALLTLHISRPTVSVQPVEGLAQGYPLRLSAFAWIKQLGSVGCMMGR  
 KPLTLRHWFNTDSPQVPIKPWFTLSRYLLWTLGSPILLEGSCALWILQAVRKWQPQDPKGS

TRTRPLE - GFP Tag - V

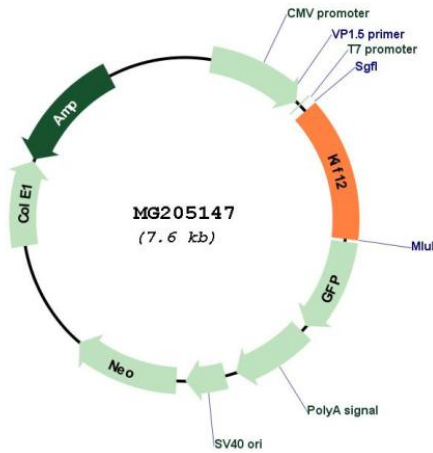
**Restriction Sites:** SgfI-MluI

**Cloning Scheme:**

Cloning sites used for ORF Shutting:



**Plasmid Map:**



**ACCN:** BC022225

**ORF Size:** 1031 bp

<b>OTI Disclaimer:</b>	The molecular sequence of this clone aligns with the gene accession number as a point of reference only. However, individual transcript sequences of the same gene can differ through naturally occurring variations (e.g. polymorphisms), each with its own valid existence. This clone is substantially in agreement with the reference, but a complete review of all prevailing variants is recommended prior to use. <a href="#">More info</a>
<b>OTI Annotation:</b>	This clone was engineered to express the complete ORF with an expression tag. Expression varies depending on the nature of the gene.
<b>Components:</b>	The ORF clone is ion-exchange column purified and shipped in a 2D barcoded Matrix tube containing 10ug of transfection-ready, dried plasmid DNA (reconstitute with 100 ul of water).
<b>Reconstitution Method:</b>	<ol style="list-style-type: none"><li>1. Centrifuge at 5,000xg for 5min.</li><li>2. Carefully open the tube and add 100ul of sterile water to dissolve the DNA.</li><li>3. Close the tube and incubate for 10 minutes at room temperature.</li><li>4. Briefly vortex the tube and then do a quick spin (less than 5000xg) to concentrate the liquid at the bottom.</li><li>5. Store the suspended plasmid at -20°C. The DNA is stable for at least one year from date of shipping when stored at -20°C.</li></ol>
<b>RefSeq:</b>	<a href="#">BC022225</a> , <a href="#">AAH22225</a>
<b>RefSeq Size:</b>	3402 bp
<b>RefSeq ORF:</b>	1031 bp
<b>Locus ID:</b>	16552
<b>Cytogenetics:</b>	4 B3