

Product datasheet for **MG205117**

Cab39 (NM_133781) Mouse Tagged ORF Clone

Product data:

Product Type:	Expression Plasmids
Product Name:	Cab39 (NM_133781) Mouse Tagged ORF Clone
Tag:	TurboGFP
Symbol:	Cab39
Synonyms:	AA408805; AA960512; C78372; MO25; MO25alpha
Mammalian Cell Selection:	Neomycin
Vector:	pCMV6-AC-GFP (PS100010)
E. coli Selection:	Ampicillin (100 ug/mL)
ORF Nucleotide Sequence:	>MG205117 representing NM_133781 Red=Cloning site Blue=ORF Green=Tags(s)

TTTTGTAATACGACTCACTATAGGGCGGCCGGAATTCGTCGACTGGATCCGGTACCGAGGAGATCTGCC
GCC**CGATCGCC**

ATGCCGTTCCCATTTGGCAAGTCTCACAAGTCTCCGGCAGATATTGTGAAGAAGTGAAGGAGAGCATGG
CTGTTTTGGAAAAGCAGGACATTTCTGACAAAAGGCAGAAAAGGCTACAGAAGAAGTTTCCAAAATTT
GGTCGCCATGAAAGAAATTTCTGTACGGCACCAATGAGAAGGAGCCTCAGACAGAGGCGGTAGCTCAGCTG
GCTCAGGAGCTGTACAATAGCGGGCTCCTCGGCACCCTGGTAGCTGACTTACAGCTCATTGACTTTGAGG
GCAAAAAGAGCTGGCTCAAATTTCAACAATATTCTCAGAAGACAAATGGTACAAGAAGTCTACTGT
TGAATACATCTGCACCCAACAGAATATTTGTTCATGTTATTGAAAGGGTATGAATCTCCAGAAATAGCT
CTTAATTGTGGATAATGTTAAGAGAATGCATCAGACATGAACCACTTGCAAAAATCATTGTGGTTCAG
AACAGTTTTATGACTTCTTCAGATATGTTGAAATGTCAACATTTGACATAGCTTCAGATGCATTTGCTAC
ATTCAGGATTTACTTACAAGACATAAATTGCTCAGTGCAGAATTTTGGAAACAATTATGATAGATTT
TTCAGTGAATATGAAAAGCTACTTCATTAGAAAATTATGTGACAAAGAGACAGTCACTGAAGCTTCTGG
GTGAGCTGCTGTTGGACAGACACAATTCACAATTATGACAAAGTACATCAGCAAGCCCGAGAACCTCAA
GCTAATGATGAACCTCCTCCGAGACAAGAGCCGCAACATCCAGTTCGAGGCCCTCCACGTGTTCAAGGTG
TTTGTGGCCAACCCCAACAAGACGACGCCATCCTAGACATCCTCCTCAAGAACCAGACCAAGCTCATCG
AGTTCCTCAGCAAGTTTCAGAACGACAGGACCGAGGACGAGCAGTTCACGACGAGAAGACCTACTTAGT
CAAGCAGATCAGGGATTTGAAGAGAGCCGCCAGCAGGAAGCC

ACGCGTACGCGGCCGCTCGAG - GFP Tag - GTTTAA



[View online »](#)

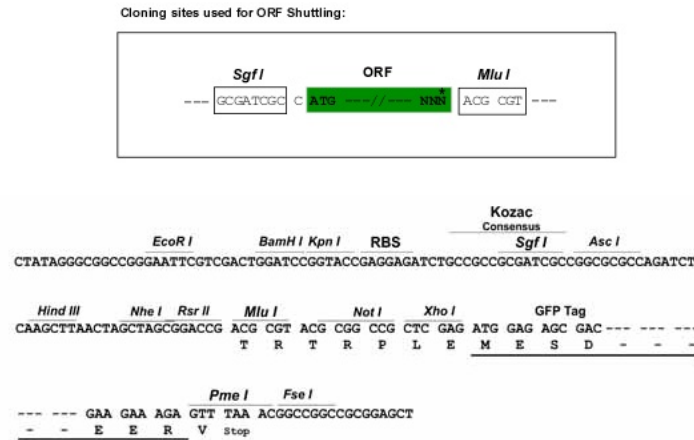
Protein Sequence: >MG205117 representing NM_133781
Red=Cloning site Green=Tags(s)

MPFPFGKSHKSPADIVKNLKESMAVLEKQDISDKKAEKATEEVSKNLVAMKEILYGTNEKEPQTEAVAQL
 AQELYNSGLLGLTVADLQLIDFEGKKDVAQIFNNILRRQIGTRTPTVEYICTQQNILFMLLKGYESPEIA
 LNCGIMLRECI RHEPLAKIILWSEQFYDFFRYVEMSTFDIASDAFATFKDLLTRHKLLSAEFLEQHYDRF
 FSEYEKLLHSENYVTKRQSLKLLGELLDRHNFITMTKYISKPENLKLMMNLLRDKSRNIQFEAFHVFKV
 FVANPNKTQPIILDILLKNQTKLIEFLSKFQNDRTED EQFNDEKTYLVKQIRD LKRAAQEA

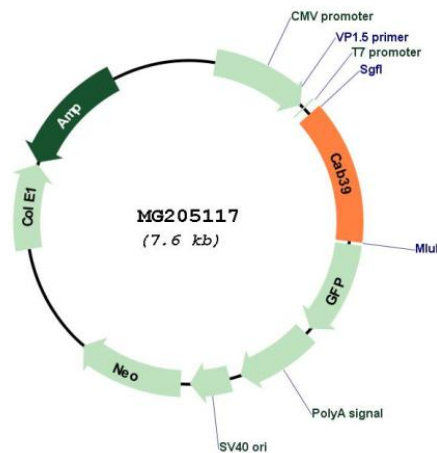
TRTRPLE - GFP Tag - V

Restriction Sites: SgfI-MluI

Cloning Scheme:



Plasmid Map:



ACCN: NM_133781

ORF Size: 1023 bp

OTI Disclaimer:	The molecular sequence of this clone aligns with the gene accession number as a point of reference only. However, individual transcript sequences of the same gene can differ through naturally occurring variations (e.g. polymorphisms), each with its own valid existence. This clone is substantially in agreement with the reference, but a complete review of all prevailing variants is recommended prior to use. More info
OTI Annotation:	This clone was engineered to express the complete ORF with an expression tag. Expression varies depending on the nature of the gene.
Components:	The ORF clone is ion-exchange column purified and shipped in a 2D barcoded Matrix tube containing 10ug of transfection-ready, dried plasmid DNA (reconstitute with 100 ul of water).
Reconstitution Method:	<ol style="list-style-type: none">1. Centrifuge at 5,000xg for 5min.2. Carefully open the tube and add 100ul of sterile water to dissolve the DNA.3. Close the tube and incubate for 10 minutes at room temperature.4. Briefly vortex the tube and then do a quick spin (less than 5000xg) to concentrate the liquid at the bottom.5. Store the suspended plasmid at -20°C. The DNA is stable for at least one year from date of shipping when stored at -20°C.
RefSeq:	NM_133781.1
RefSeq Size:	2322 bp
RefSeq ORF:	1026 bp
Locus ID:	12283
UniProt ID:	Q06138
Cytogenetics:	1 C5
Gene Summary:	Component of a complex that binds and activates STK11/LKB1. In the complex, required to stabilize the interaction between CAB39/MO25 (CAB39/MO25alpha or CAB39L/MO25beta) and STK11/LKB1 (By similarity).[UniProtKB/Swiss-Prot Function]