

Product datasheet for **MG205116**

Rdh10 (NM_133832) Mouse Tagged ORF Clone

Product data:

Product Type:	Expression Plasmids
Product Name:	Rdh10 (NM_133832) Mouse Tagged ORF Clone
Tag:	TurboGFP
Symbol:	Rdh10
Synonyms:	3110069K09Rik; 4921506A21Rik; AI875664; AW549993; D1ErtD762e; m366Asp
Mammalian Cell Selection:	Neomycin
Vector:	pCMV6-AC-GFP (PS100010)
E. coli Selection:	Ampicillin (100 ug/mL)
ORF Nucleotide Sequence:	>MG205116 representing NM_133832 Red=Cloning site Blue=ORF Green=Tags(s)

TTTTGTAATACGACTCACTATAGGGCGGCCGGAATTCGTCGACTGGATCCGGTACCGAGGAGATCTGCC
GCC**CGATCGCC**

ATGAACATCGTAGTGGAGTTCTTCGTGGTCACTTTCAAAGTGCTGTGGCGTTCGTGCTGGCCGCGGCGC
GCTGGCTGGTGC GGCCAAGGAGAAGAGCGTGGCCGCCAGGTGTGCCTCATCACGGCGCGGGCAGCGG
CCTGGCCGCCTCTTTGCTCTCGAGTTCGCCCGCGCCGGCGCTGCTGGTTCTCTGGGACATCAACACG
CAGAGCAATGAGGAGACCGCAGGCATGGTTCGCCACATCTACCGGACCTGGAGGCGCCGACGCTGCTG
CTCTGCAAGCTGAAAAGGTGAGGAGAAATCCTGCCCCGTGTAACCTACAGGTTTTTACCTACACTTG
TGACGTGGGGAAGAGAGAGAATGTCTACCTGACAGCTGAAAGGGTCCGCAAGGAGTTGGCGAGGTCTCG
GTCCTGGTCAATAATGCTGGTGTGGTTTCTGGACATCACCTTCTGGAATGCTGATGAGCTCATTGAAA
GAACCATGATGGTCAACTGCCACGCACACTTCTGGACCACTAAGGCCTTCTTCCAACGATGCTAGAGAT
TAATCATGGCCACATTGTGACGGTCGCGAGCTCCCTGGGACTGTTGAGCACTGCTGGAGTTGAGGATTAC
TGTGCCAGTAAATTTGGAGTTGTGGTTTTACGAGTCTCTGAGCCATGAGCTAAAGGCTGCTGAAAAGG
ATGGAATTAACAACACTCGTTTGGCCCTTACCTGTAGACACGGGCATGTTGAGAGGCTGCCGAATCAG
AAAAGAAATTGAGCCCTTTTGGCCCTTGAAGCCTGATTACTGTGTGAAGCAGGCTATGAGGGCCATC
CTCACTGACCAGCCCATGGTCTGCACGCCCGCCTCATGTACATCGTGACATTGTAAGAGCATCCTTC
CTTTTGAAGCCGTCGTGTGCATGTATCGATTTCTAGGAGCGGACAAGTGTATGTATCCCTTTATTGCTCA
AAGAAAACAAGCCACAAACAACATGAAGCAAAAATGGAATC

ACGCGTACGCGGCCGCTCGAG - GFP Tag - GTTTAA



[View online »](#)

Protein Sequence: >MG205116 representing NM_133832
 Red=Cloning site Green=Tags(s)

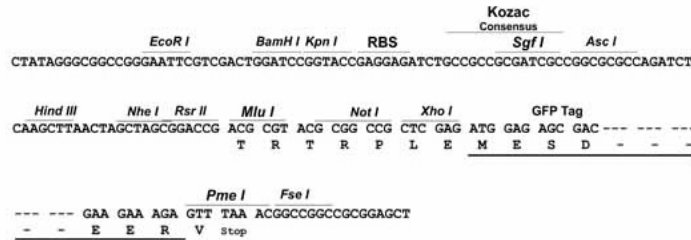
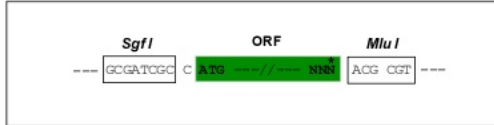
MNIVVEFFVVTFKVLWAFVLAARWLVRPKEKSVAGQVCLITGAGSGLGRLFALEFARRRALLVLDINT
 QSNEETAGMVRHIYRDLEAADAALQAGKGEEELPPCNLQVFTYCDVKGRENVYLTAERVSRKEVGEVS
 VLVNNAVVSYSGHLLLECPDELIERTMMVNCHAHFWTTKAFLLPTMLEINHGHIIVTVASSLGLFSTAGVEDY
 CASKFGVVGFHESLSHELKAAEKDGIKTTLVCPYLVDTGMRGCRIRKEIEPFLPPLKPDYCVKQAMRAI
 LTDQPMVCTPRLMYIVTFMKSILPFEAVVCMYRFLGADKCMYPFIAQRKQATNNNEAKNGI

TRTRPLE - GFP Tag - V

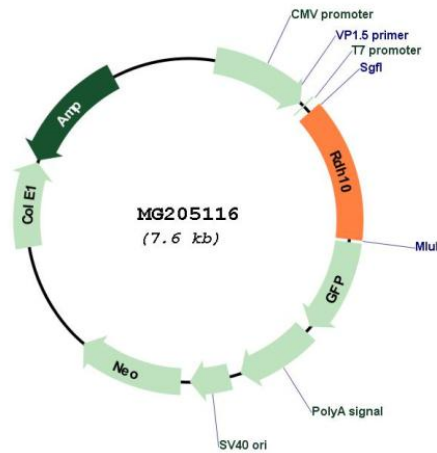
Restriction Sites: SgfI-MluI

Cloning Scheme:

Cloning sites used for ORF Shuttling:



Plasmid Map:



ACCN: NM_133832

ORF Size: 1023 bp

OTI Disclaimer:	The molecular sequence of this clone aligns with the gene accession number as a point of reference only. However, individual transcript sequences of the same gene can differ through naturally occurring variations (e.g. polymorphisms), each with its own valid existence. This clone is substantially in agreement with the reference, but a complete review of all prevailing variants is recommended prior to use. More info
OTI Annotation:	This clone was engineered to express the complete ORF with an expression tag. Expression varies depending on the nature of the gene.
Components:	The ORF clone is ion-exchange column purified and shipped in a 2D barcoded Matrix tube containing 10ug of transfection-ready, dried plasmid DNA (reconstitute with 100 ul of water).
Reconstitution Method:	<ol style="list-style-type: none">1. Centrifuge at 5,000xg for 5min.2. Carefully open the tube and add 100ul of sterile water to dissolve the DNA.3. Close the tube and incubate for 10 minutes at room temperature.4. Briefly vortex the tube and then do a quick spin (less than 5000xg) to concentrate the liquid at the bottom.5. Store the suspended plasmid at -20°C. The DNA is stable for at least one year from date of shipping when stored at -20°C.
RefSeq:	NM_133832.2
RefSeq Size:	2295 bp
RefSeq ORF:	1026 bp
Locus ID:	98711
UniProt ID:	Q8VCH7
Cytogenetics:	1 4.94 cM
Gene Summary:	Retinol dehydrogenase with a clear preference for NADP. Converts all-trans-retinol to all-trans-retinal. Has no detectable activity towards 11-cis-retinol, 9-cis-retinol and 13-cis-retinol (By similarity). Required for normal embryonic development.[UniProtKB/Swiss-Prot Function]