

Product datasheet for **MG205114**

Arfip2 (NM_029802) Mouse Tagged ORF Clone

Product data:

Product Type:	Expression Plasmids
Product Name:	Arfip2 (NM_029802) Mouse Tagged ORF Clone
Tag:	TurboGFP
Symbol:	Arfip2
Synonyms:	2310002N04Rik; POR; Por1
Mammalian Cell Selection:	Neomycin
Vector:	pCMV6-AC-GFP (PS100010)
E. coli Selection:	Ampicillin (100 ug/mL)
ORF Nucleotide Sequence:	>MG205114 representing NM_029802 Red=Cloning site Blue=ORF Green=Tags(s)

TTTTGTAATACGACTCACTATAGGGCGGCCGGAATTCGTCGACTGGATCCGGTACCGAGGAGATCTGCC
GCC**CGATCGCC**

ATGACGGACGGGATTCTAGGGAAGGCAGCCACAATGGAGATCCCATCCACGGAAATGGCGAAGCTGGGC
AGCTTCTGAAGACGATGGGCTGGAGCAGGACCTCCAGCAGGTGATGGTGTGAGGACCAACCTCAATGA
AACTAGCATTGTGTCTGGTGGCTATGGGGCTCTGGTACGGACTCATCCACAGGGTCTGGCCGACAT
CCATCTCACAGCACGTCAACCCTCTGGCCCTGGTACGAGGTGGCCCGGGCATCGCTGGAGAAAAGTTG
ACATCGTCAAGAAATGGGGCATCAACACATATAAGTGCACAAAGCAGCTGTTATCAGAGAGATTTGGCCG
AGGCTCCCGACTGTGGATCTGGAGCTAGAGCTGCAGATTGAGTTGCTGCGTGAGACGAAGCGCAAGTAT
GAAAGTGTCTGCAGCTGGGCGGGCACTGACAGCCACCTCTACAGCCTGTTGCAGACCCAGCATGCAC
TAGGTGATGCCTTTGCTGACCTCAGCCAGAAGTCCCGAGCTTCAGGAGGAATTTGGCTATAATGCAGA
GACACAAAAGCTGCTGTGCAAGAATGGGGAGACGCTGCTAGGGGCTGTGAACTTCTTTGTCTCTAGCATC
AACACACTGGTCACCAAGACCATGGAAGACACACTCATGACTGTCAAACAGTATGAGGCTGCCAGGCTGG
AATATGATGCCTACCGGACAGACTTAGAAGAGCTGAGCCTAGGGCCCCGGATGCAGGGACTCGTGGTGC
ACTTGAGAGTGCCAGGCCACTTTCCAGACCCATCGGGACAAATATGAGAAGCTGCGGGGAGATGTGCC
ATCAAGCTGAAGTTCCTGGAAGAAAACAAGATCAAGGTGATGCACAAGCAGCTGCTGCTTCCACAATG
CCGTGTCTGCCTACTTCGCTGGGAACCGAAGACAGCTGGAGCAGACTCTTCAGCAGTTCAACATCAAGCT
GCGGCCTCCAGGACCGAGAAGCCTTCTGGTTAGAGGAGCAG

ACGCGTACGCGGCCGCTCGAG - GFP Tag - GTTTAA



[View online »](#)

Protein Sequence: >MG205114 representing NM_029802
Red=Cloning site Green=Tags(s)

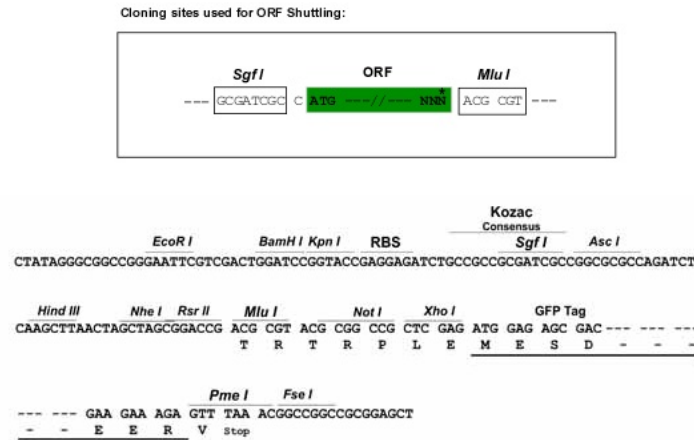
MTDGILGKAATMEIPIHNGEAGQLPEDDGLEQDLQQVMVSGPNLNETSIVSGGYGGSGDGLIPTGSGRH
 PSHSTSPSGPGDEVARGIAGEKFDIVKKWGINTYKCTKQLLSERFGRGSRVTDLELELQIELLRETKRKY
 ESVLQLGRALTAHLYSLTQHALGDAFADLSQKSPELQEEFGYNAETQKLLCKNGETLLGAVNFFVSSI
 NTLVTKTMEDTLMTVKQYEAARLEYDAYRTDLEELSLGPRDAGTRGRLESAQATFQTHRDYKELRGDVA
 IKLKFLKLEENKIKVMHKQLLLLHNAVSAFYAGNQKQLEQLTQQFNILRPPGAEKPSWLEEQ

TRTRPLE - GFP Tag - V

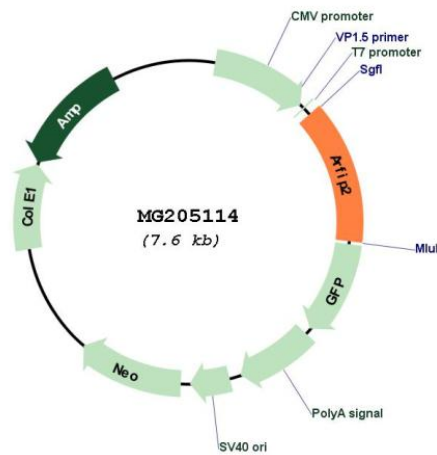
Restriction Sites:

Sgfl-MluI

Cloning Scheme:



Plasmid Map:



ACCN: NM_029802

ORF Size: 1023 bp

OTI Disclaimer:	The molecular sequence of this clone aligns with the gene accession number as a point of reference only. However, individual transcript sequences of the same gene can differ through naturally occurring variations (e.g. polymorphisms), each with its own valid existence. This clone is substantially in agreement with the reference, but a complete review of all prevailing variants is recommended prior to use. More info
OTI Annotation:	This clone was engineered to express the complete ORF with an expression tag. Expression varies depending on the nature of the gene.
Components:	The ORF clone is ion-exchange column purified and shipped in a 2D barcoded Matrix tube containing 10ug of transfection-ready, dried plasmid DNA (reconstitute with 100 ul of water).
Reconstitution Method:	<ol style="list-style-type: none">1. Centrifuge at 5,000xg for 5min.2. Carefully open the tube and add 100ul of sterile water to dissolve the DNA.3. Close the tube and incubate for 10 minutes at room temperature.4. Briefly vortex the tube and then do a quick spin (less than 5000xg) to concentrate the liquid at the bottom.5. Store the suspended plasmid at -20°C. The DNA is stable for at least one year from date of shipping when stored at -20°C.
RefSeq:	NM_029802.4
RefSeq Size:	1852 bp
RefSeq ORF:	1026 bp
Locus ID:	76932
UniProt ID:	Q8K221
Cytogenetics:	7 E3
Gene Summary:	Putative target protein of ADP-ribosylation factor. Involved in membrane ruffling (By similarity).[UniProtKB/Swiss-Prot Function]