

Product datasheet for **MG205096**

Gnb2 (NM_010312) Mouse Tagged ORF Clone

Product data:

Product Type:	Expression Plasmids
Product Name:	Gnb2 (NM_010312) Mouse Tagged ORF Clone
Tag:	TurboGFP
Symbol:	Gnb2
Synonyms:	Gnb-2
Mammalian Cell Selection:	Neomycin
Vector:	pCMV6-AC-GFP (PS100010)
E. coli Selection:	Ampicillin (100 ug/mL)
ORF Nucleotide Sequence:	>MG205096 representing NM_010312 Red=Cloning site Blue=ORF Green=Tags(s)

TTTTGTAATACGACTCACTATAGGGCGCCGGAATTCGTCGACTGGATCCGGTACCGAGGAGATCTGCC
GCC**CGATCGCC**

ATGAGTGAGCTGGAGCAACTGAGACAGGAGGCCGAGCAGCTCCGGAACCAGATCCGGGACGCCAGAAAAG
CATGCGGGGATTCCACACTGACCCAGATCACAGCTGGGCTGGACCCAGTGGGGCGAATTCAGATGAGAAC
ACGGAGGACCCTCCGTGGACACCTGGCAAAAATCTATGCCATGCACTGGGGGACAGACTCAAGGCTGCTG
GTCAGCGCCTCCAGGACGAAAGCTCATCTTTGGGACAGCTACACCACTAACAAGTCCACGCCATCC
CTCTGCGTTCTCTGGGTGATGACCTGTGCCTACGCCCTCAGGGAACCTTTGTGGCCTGTGGGGTTT
GGACAACATCTGCTCCATCTATAGTCTCAAGACCCGAGAGGGCAATGTCAGGGTACGAGAGAGCTGCCT
GGCCACACTGGGTACCTGTGATGCTGCCCTTCTGGACGACAACCAATCATCACCAGCTCTGGGGACA
CCACCTGTGCCCTGTGGGACATTGAGACAGGCCAGCAGACGGTGGGGTTTGTGGACACAGTGGGGATG
GATGTCCCTGTCACTGGCCCCGATGGCCGCACCTTTGTGTGTCAGGTGCCTGTGACGCCTCCATCAAGCTG
TGGGATGTTCCGGATTCCATGTGCCGACAGACATTCATAGGTACGAGTCGGACATCAATGCCGTGGCTT
TCTTCCCCAATGGCTATGCCTTCACCACGGGATCAGATGACGCCACTTGTGCCTCTTTGACCTGCGGGC
TGATCAGGAGCTGCTCATGTATCCACGACAACATCATCTGCGGCATCACCTCGGTTGCCTTCTCGGC
AGCGGCCGGCTGCTGCTCGCTGGCTACGACGACTTCAACTGCAACATCTGGGATGCCATGAAGGGTGACC
GTGCAGGTGTCCTCGCTGGCCATGATAACCGTGTGAGCTGCCTTGGGGTACAGATGATGGAATGGCCGT
GGCTACAGGCTCCTGGGACTCCTCCTCAAGATCTGGAAC

ACGCGTACGCGGCCGCTCGAG - GFP Tag - GTTTAA



[View online »](#)

Protein Sequence: >MG205096 representing NM_010312
Red=Cloning site Green=Tags(s)

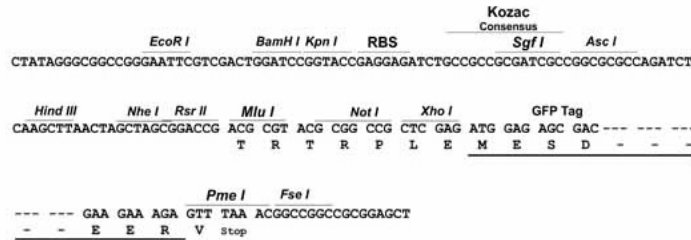
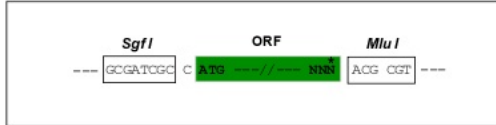
MSELEQLRQEAELRNQIRDARKACGDSTLTQITAGLDPVGRIQMRTRRTLGRHLAKIYAMHWGTD S RLL
 VSASQDGKLI IWDSYTTNKVHAIPLRSSWVMTCA YAPSGNFVACGGLDNICSIYSLKTRREGNVRVSREL P
 GHTGYLSCCRFLDDNQIITSSGDTT CALWDIETGQQT VGFAGHSGDVM SLSLAPDGRTFVSGACDASI KL
 WDVRDSMCRQTFIGHESDINAVAFFPNGYAFTTGSDDATCRLFDLRADQELLMYSHDNIICGITSVAFSR
 SGRLLLAGYDDFNCNIWDAMKGDRA GVLAGHDNRVSCLGVTDDGMAVATGSWDSFLKIWN

TRTRPLE - GFP Tag - V

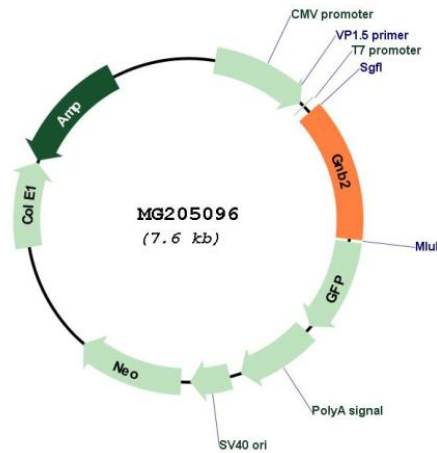
Restriction Sites: SgfI-MluI

Cloning Scheme:

Cloning sites used for ORF Shuttling:



Plasmid Map:



ACCN: NM_010312

ORF Size: 1020 bp

OTI Disclaimer:	The molecular sequence of this clone aligns with the gene accession number as a point of reference only. However, individual transcript sequences of the same gene can differ through naturally occurring variations (e.g. polymorphisms), each with its own valid existence. This clone is substantially in agreement with the reference, but a complete review of all prevailing variants is recommended prior to use. More info
OTI Annotation:	This clone was engineered to express the complete ORF with an expression tag. Expression varies depending on the nature of the gene.
Components:	The ORF clone is ion-exchange column purified and shipped in a 2D barcoded Matrix tube containing 10ug of transfection-ready, dried plasmid DNA (reconstitute with 100 ul of water).
Reconstitution Method:	<ol style="list-style-type: none">1. Centrifuge at 5,000xg for 5min.2. Carefully open the tube and add 100ul of sterile water to dissolve the DNA.3. Close the tube and incubate for 10 minutes at room temperature.4. Briefly vortex the tube and then do a quick spin (less than 5000xg) to concentrate the liquid at the bottom.5. Store the suspended plasmid at -20°C. The DNA is stable for at least one year from date of shipping when stored at -20°C.
RefSeq:	NM_010312.5
RefSeq Size:	1619 bp
RefSeq ORF:	1023 bp
Locus ID:	14693
UniProt ID:	P62880
Cytogenetics:	5 76.54 cM
Gene Summary:	Guanine nucleotide-binding proteins (G proteins) are involved as a modulator or transducer in various transmembrane signaling systems. The beta and gamma chains are required for the GTPase activity, for replacement of GDP by GTP, and for G protein-effector interaction. [UniProtKB/Swiss-Prot Function]