

Product datasheet for **MG205057**

Srsf6 (NM_026499) Mouse Tagged ORF Clone

Product data:

Product Type: Expression Plasmids
Product Name: Srsf6 (NM_026499) Mouse Tagged ORF Clone
Tag: TurboGFP
Symbol: Srsf6
Synonyms: 1210001E11Rik; AI314910; AW146126; Sf; Sfrs6
Mammalian Cell Selection: Neomycin
Vector: pCMV6-AC-GFP (PS100010)
E. coli Selection: Ampicillin (100 ug/mL)
ORF Nucleotide Sequence: >MG205057 representing NM_026499
 Red=Cloning site Blue=ORF Green=Tags(s)

TTTTGTAATACGACTCACTATAGGGCGGCCGGAATTCGTCGACTGGATCCGGTACCGAGGAGATCTGCC
 GCC**CGATCGCC**

ATGCCGCGCTACATAGGACGCCTGAGCTACAACGTCCGGGAGAAGGACATCCAGCGCTTTTTCAGCG
 GCTACGGCCGCTCCTCGAGATCGACCTCAAAAATGGGTACGGTTTCGTGGAGTTCGAGGACTCCCGGA
 TGCCGACGATGCCGTGTACGAGCTCAACAGCAAGGAGCTGTGCGGCGAGCGGTGATCGTAGAGCACGCC
 CGGGCCCGCGCCGACCGGATGGCTACAGCTACGGAAGCCGAGTGGTGGAGGTGGATACAGCAGTC
 GGAGAACTTCTGGCAGAGACAAATATGGACCACCTGTTCTGACAGAGTACAGGCTTATTGTAGAAAATCT
 GTCTAGTCGTTGCAAGTAAAGGATTTTCATGCGGCAAGCAGGAGAAGTGAAGTATGCAGAT
 GCTCACAAGAACGAACAATGAGGGTGTGATTGAATTTAGATCCTACTCCGACATGAAGCGTGCTTTGG
 AATAACTGGATGGTACAGAAAATAATGGCAGAAATATTAGGCTTATTGAAGATAAGCCAAGAACAAGCCA
 TAGGCGCTCCTACTCTGGCAGTAGATCCAGATCACGGTCTAGAAGAAGTCTCGGAGTAGGAGTCGAGA
 AGCAGCCGAGTAGATCTCGAAGTATCTCAAAAAGTCGCTCCCGATCTAGGTCTCGGAGCAAAGTTCGAT
 CCCGATCCCGCTCAAAAGGCAGGAAATCCAGATCAAAGAGCAAATCGAAGCCCAAGTCTGACCGGGGCTC
 CCATCCCCTCAAGAAGCAGGTCTAAGGATAAGTATGGGAAGTACGTAGTAGGTCACGGTCTCGGTCC
 CCCAAAGAGAACGGCAAAGGAGACATAAAGTCAAAGTCCAGATCCCGGAGCCAGTCTCGTCCCCTCGC
 CTCTACCTGCTCCACCCTCAAAGGCTCGGTCCATGTCCCCTCCGACAAAAGAGCTTCAAGGTCCCGTTC
 TAGATCTCGTTCAAGGTCCAGATCAAGTCCAGAGAT

ACGCGTACGCGGCCGCTCGAG - GFP Tag - GTTTAA



[View online »](#)

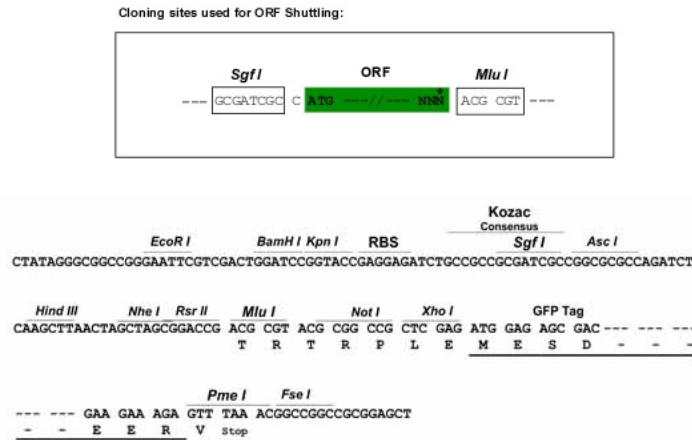
Protein Sequence: >MG205057 representing NM_026499
 Red=Cloning site Green=Tags(s)

MPRVYIGRLSYNVREKDIQRFFSGYGRLLLEIDLKNGYGFVEFEDSRDADDAVYELNSKELCGERVIVEHA
 RGP RRDRDGYSGRSRSGGGYSSRRTSGRDKYGPVRYEYRLIVENLSSRCSWQDLKDFMRQAGEVTYAD
 AHKERTNEGVIIEFRSYSDMKRALDKLDGTEINGRNIRLIEDKPRTSHRRSYSGRSRSRRRSRRSR
 SSRSRRSISKRSRSRSRSKGRSRSRSKGRKSRKSKSKPKSDRGSHSHSRSRSKDKYKGRSRSRSR
 PKENKGDIKSKRSRSQSRSHSPLPAPPSKARSMSPPTKRASRSRSRSRSRSSSRD

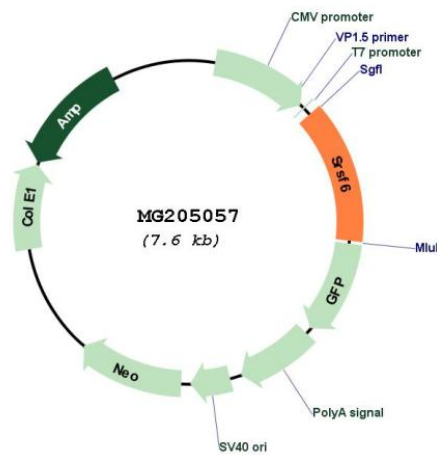
TRTRPLE - GFP Tag - V

Restriction Sites: SgfI-MluI

Cloning Scheme:



Plasmid Map:



ACCN: NM_026499

ORF Size: 1017 bp

| | |
|-------------------------------|----------------------------------------------------------------------------------------------------------------------------------------------------------------------------------------------------------------------------------------------------------------------------------------------------------------------------------------------------------------------------------------------------------------------------------------------------------------------------------------------------------------------------------------------------------------------------------------------------------|
| OTI Disclaimer: | The molecular sequence of this clone aligns with the gene accession number as a point of reference only. However, individual transcript sequences of the same gene can differ through naturally occurring variations (e.g. polymorphisms), each with its own valid existence. This clone is substantially in agreement with the reference, but a complete review of all prevailing variants is recommended prior to use. More info |
| OTI Annotation: | This clone was engineered to express the complete ORF with an expression tag. Expression varies depending on the nature of the gene. |
| Components: | The ORF clone is ion-exchange column purified and shipped in a 2D barcoded Matrix tube containing 10ug of transfection-ready, dried plasmid DNA (reconstitute with 100 ul of water). |
| Reconstitution Method: | <ol style="list-style-type: none">1. Centrifuge at 5,000xg for 5min.2. Carefully open the tube and add 100ul of sterile water to dissolve the DNA.3. Close the tube and incubate for 10 minutes at room temperature.4. Briefly vortex the tube and then do a quick spin (less than 5000xg) to concentrate the liquid at the bottom.5. Store the suspended plasmid at -20°C. The DNA is stable for at least one year from date of shipping when stored at -20°C. |
| RefSeq: | NM_026499.3 |
| RefSeq Size: | 3567 bp |
| RefSeq ORF: | 1020 bp |
| Locus ID: | 67996 |
| UniProt ID: | Q3TWW8 |
| Cytogenetics: | 2 83.87 cM |
| Gene Summary: | The protein encoded by this gene is a member of the serine/arginine (SR)-rich family of pre-mRNA splicing factors, which constitute part of the spliceosome. Each of these factors contains an RNA recognition motif (RRM) for binding RNA and an RS domain for binding other proteins. The RS domain is rich in serine and arginine residues and facilitates interaction between different SR splicing factors. In addition to being critical for mRNA splicing, the SR proteins have also been shown to be involved in mRNA export from the nucleus and in translation. [provided by RefSeq, Sep 2010] |