

## Product datasheet for **MG205056**

### Palm (BC015297) Mouse Tagged ORF Clone

#### Product data:

Product Type:	Expression Plasmids
Product Name:	Palm (BC015297) Mouse Tagged ORF Clone
Tag:	TurboGFP
Symbol:	Palm
Mammalian Cell Selection:	Neomycin
Vector:	pCMV6-AC-GFP (PS100010)
E. coli Selection:	Ampicillin (100 ug/mL)
ORF Nucleotide Sequence:	>MG205056 representing BC015297 Red=Cloning site Blue=ORF Green=Tags(s)

TTTTGTAATACGACTCACTATAGGGCGGCCGGAATTCGTCGACTGGATCCGGTACCGAGGAGATCTGCC  
GCC**CGATCGCC**

ATGGAGGTCTGGCAACAGACACGGCGTCCCAGCAGGAGCGGCTCAAGCCATCGCTGAGAAGCGTAGGA  
AGCAGGCAGAGATTGAGAGCAAGCGGAGACAACCTGGAGGATGACCGAAGACAGCTGCAGTACCTGAAGTC  
CAAGGCACTGAGGGAACGCTGGCTGCTGGAGGGGACACTATCCTCAGCCTCAGAGGGCGACGAGGACATG  
AGGAAACAGATGCAGGAGGATGAGCAGAAAGCCCGGGCCTGGAGGAATCCATCACCAGGCTCGAGAAAG  
AGATCGATGTTCTGGAGTTGGAGAGTCAGCCCCAGCTGCCTCAAAGGAGAATTCAGCAGCCCCAGCCC  
AGGCCGGCCCCAGTCTGCAAGCCAGCCAAGGAGGAGCAAAAGTCAGAAACCTTGGTGAACGCTCAGCAG  
ACTCCGTTGGGTACCCCAAAAGAGAATCGCACGTCCACACCGGTGCGGAGTCCAGGGGATCCACAATGA  
TGAAAGCAGTGGTCCATGCCGTGGACGGCATCGCTGAGAACGGGATCCAGCCTCTAAGTTCCTCCGAGGT  
GGACGAACTCATTACAAGGCCGATGAGGTCACTGAGCGAGGCAGGGTCCACAGCTGGCCAGCGGAG  
CCTCGGGACTCGCAGAGGATGTCACCAGGACCACGCCGTCCAGAAGGGAGATCACAGGAGTTGAGGCTC  
AACCAGGAGAGGCCACATCAGGCCACCAGGCATCCAGCCGGTCAGGAGCCCCGGTACCATGGTCTT  
CATGGTTATCAGAACGTGGAAGATGAAGCAGAAACCAAGAAGGTACTGGCCTGCAGGACACCATCAAG  
GCTGAAGTGGTGGTATTGAAGACGCGGCCACGCCAGGGAGCCCGCACCTCTCAATGGCAGCGCTGCTG  
AGCTCCCGGCCACCAAGGAGGAGAACCAGACGGGGCCACGACCAGCCAGCGACCCAGGATCTTGA  
CATGAAGAAGCCTCGCTGTAGATGTTGTTCTGTTCATG

**ACGCGT**ACGCGGCCGCTCGAG - GFP Tag - GTTTAA



[View online »](#)

**Protein Sequence:** >MG205056 representing BC015297  
 Red=Cloning site Green=Tags(s)

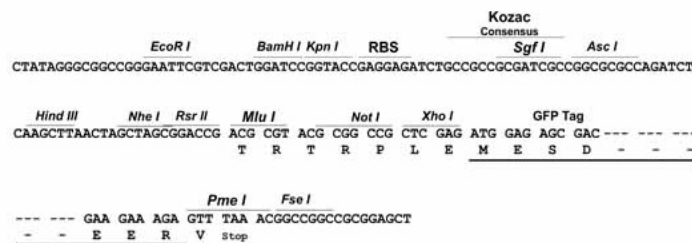
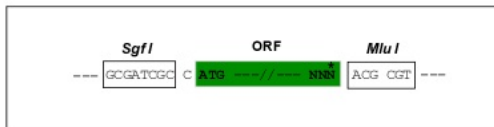
MEVLATDTASQQLQAIAEKRRKQAEIESKRRQLEDDRRQLQYLKSKALRERWLLLEGLTSSASEGDEDM  
 RKQMQEDEQKARGLEESITRLEKEIDVLEFGESAPAASKENSAAPSPGRPQSASPAKKEEQKSETLVNAQQ  
 TPLGTPKENRTSTPVRSPGGSTMMKAVVHAVDGIENGIQPLSSSEVDEL IHKADEVTLSEAGSTAGPAE  
 PRGLAEDVTRTTSPRREITGV EAQPG EATSGPPGIQPGQEPVTVMFMGYQNV EDAETKKVLGLQDTIK  
 AELVVIEDAATPREPAPLNGSAAELPATKEENQTGPTTTPSDTQDLDMKKPRCCCSVM

TRTRPLE - GFP Tag - V

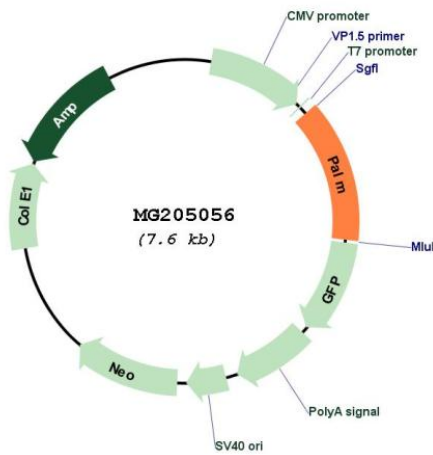
**Restriction Sites:** SgfI-MluI

**Cloning Scheme:**

Cloning sites used for ORF Shutting:



**Plasmid Map:**



**ACCN:** BC015297

**ORF Size:** 1019 bp

<b>OTI Disclaimer:</b>	The molecular sequence of this clone aligns with the gene accession number as a point of reference only. However, individual transcript sequences of the same gene can differ through naturally occurring variations (e.g. polymorphisms), each with its own valid existence. This clone is substantially in agreement with the reference, but a complete review of all prevailing variants is recommended prior to use. <a href="#">More info</a>
<b>OTI Annotation:</b>	This clone was engineered to express the complete ORF with an expression tag. Expression varies depending on the nature of the gene.
<b>Components:</b>	The ORF clone is ion-exchange column purified and shipped in a 2D barcoded Matrix tube containing 10ug of transfection-ready, dried plasmid DNA (reconstitute with 100 ul of water).
<b>Reconstitution Method:</b>	<ol style="list-style-type: none"><li>1. Centrifuge at 5,000xg for 5min.</li><li>2. Carefully open the tube and add 100ul of sterile water to dissolve the DNA.</li><li>3. Close the tube and incubate for 10 minutes at room temperature.</li><li>4. Briefly vortex the tube and then do a quick spin (less than 5000xg) to concentrate the liquid at the bottom.</li><li>5. Store the suspended plasmid at -20°C. The DNA is stable for at least one year from date of shipping when stored at -20°C.</li></ol>
<b>RefSeq:</b>	<a href="#">BC015297</a> , <a href="#">AAH15297</a>
<b>RefSeq Size:</b>	2519 bp
<b>RefSeq ORF:</b>	1019 bp
<b>Locus ID:</b>	18483
<b>Cytogenetics:</b>	10 39.72 cM
<b>Gene Summary:</b>	Involved in plasma membrane dynamics and cell process formation. Isoform 1 and isoform 2 are necessary for axonal and dendritic filopodia induction, for dendritic spine maturation and synapse formation in a palmitoylation-dependent manner.[UniProtKB/Swiss-Prot Function]