

Product datasheet for **MG205040**

Sult2b1 (NM_017465) Mouse Tagged ORF Clone

Product data:

Product Type: Expression Plasmids
Product Name: Sult2b1 (NM_017465) Mouse Tagged ORF Clone
Tag: TurboGFP
Symbol: Sult2b1
Synonyms: AI326997; BB173635; ST2B1; SULT2B
Mammalian Cell Selection: Neomycin
Vector: pCMV6-AC-GFP (PS100010)
E. coli Selection: Ampicillin (100 ug/mL)
ORF Nucleotide Sequence: >MG205040 representing NM_017465
Red=Cloning site Blue=ORF Green=Tags(s)

TTTTGTAATACGACTCACTATAGGGCGGCCGGAATTCGTCGACTGGATCCGGTACCGAGGAGATCTGCC
GCC**CGATCGCC**

ATGGACGGGCCGAGCCCCGCGCCCTGTGGAGCTCGTCTGAGAAAAATGTTCCGAAATGAGCTGGAATT
TTGGAGGTGAATACTTCAGATACAAAGGTATCCCTTTCTGTGGCATGTACTCACCGGAGAGCCTCAG
TCTGGCTGAGAACTAGCAACGTGCGGGACGACGACATCTTCATTGTCACCTACCCAAATCAGGTACC
AACTGGATGATTGAGATCGTCTGCTTAATCCTGAAAGATGGGGATCCCTCGTGGATCCGATCGGAGCCCA
TCTGGCAACGTGCGCCCTGGTGCAGACCATCATAAGCGCCTTCAATGTCTTAGACCGGCCAGCCCCCG
CATTATGAGCTCTCACCTCCCTATTGAACTCTTACGAAGGCATTCTTACGCTCCAAGGCTAAGGTGATT
TACGTGGGCCGGAACCCCGCATGTCTGGTCTCCCTCTATTATTATTCTAAGATTGCTGGCAATTAA
AGGACCTTGGTACACCCGACAGTTCCTTCAAATTTCTCAAAGGAGAAGTGCAGTTTGGCTCCTGGTT
TGACCACATCAAGGGCTGGATCCGGATGCAGAACCAAGAGAACTTCTGTTTATCACCTATGAGGAGCTG
CAGCAGGACCTGCGAGGCTCCGTGCAACGCATCTGTGAGTTCTGGGCCGGCCACTGGGTGAAGAGGCC
TGAGCTCTGTGGTGGCCACTCAGCCTTGTGTCATGAAGGCCAATACCATGTCCAACACTCGCTGCT
GCCGGCCAGCCTGCTGGACCACCGCCAGGGGAGTTCTGCGCAAAGGGATCAGTGGCGACTGGAAGAAC
CACTTCACTGTGGCCAGAGTGAGGCTTTGACAGTGTTTACCGAGAGCAAATGCACGGGGTGCAGAGGT
TCCCCTGGGACAGTCTGAAGAGGATAGCAGCCCTGATGGCCAGCCTGACCCTGAGCCAGCCCCAGCCC
AGCTTCTGATGACCCCAACCCAGGATCCTCACAA

ACGCGTACGCGGCCGCTCGAG - GFP Tag - GTTTAA



[View online »](#)

Protein Sequence: >MG205040 representing NM_017465
 Red=Cloning site Green=Tags(s)

MDGPQPRALWSSSEKNVSEMSWNFGGEYFRYKGIPIFPVGMYSPELSLAENTSNVRDDIFIVTYPKSGT
 NWMIEIVCLILKGDGPSWIRSEPIWQRAPWCETIISAFNVLDSPRIMSSHLP IELFTKAFFSSKAKVI
 YVGRNPRDVVVSLYYYYSKIAGQLKDPGTPDQFLQNF LKGEVQFGSWFDHIKGWIRMQNQENFLFITYEEL
 QQDLRGSVQRICEFLGRPLGEEALSSVVAHSFAAMKANTMSNYLLPASLLDHRQGEFLRKGISGDWKN
 HFTVAQSEAFDSVYREQMHGVQRFPWDTSEEDSSPDGQPDPEPSPSPASDDPNPGSSQ

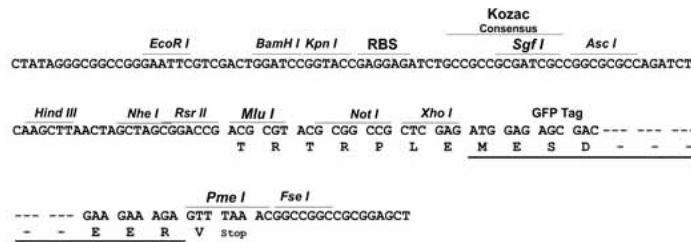
TRTRPLE - GFP Tag - V

Restriction Sites:

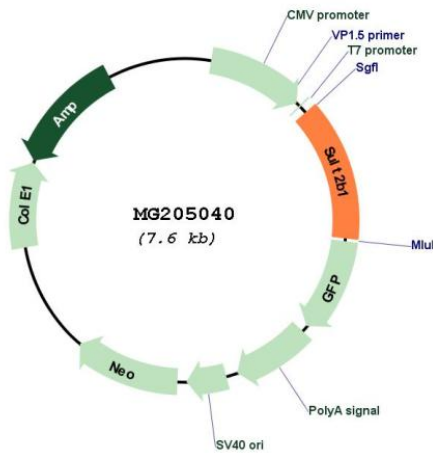
Sgfl-MluI

Cloning Scheme:

Cloning sites used for ORF Shuttling:



Plasmid Map:



ACCN: NM_017465

ORF Size: 1014 bp

OTI Disclaimer:	The molecular sequence of this clone aligns with the gene accession number as a point of reference only. However, individual transcript sequences of the same gene can differ through naturally occurring variations (e.g. polymorphisms), each with its own valid existence. This clone is substantially in agreement with the reference, but a complete review of all prevailing variants is recommended prior to use. More info
OTI Annotation:	This clone was engineered to express the complete ORF with an expression tag. Expression varies depending on the nature of the gene.
Components:	The ORF clone is ion-exchange column purified and shipped in a 2D barcoded Matrix tube containing 10ug of transfection-ready, dried plasmid DNA (reconstitute with 100 ul of water).
Reconstitution Method:	<ol style="list-style-type: none">1. Centrifuge at 5,000xg for 5min.2. Carefully open the tube and add 100ul of sterile water to dissolve the DNA.3. Close the tube and incubate for 10 minutes at room temperature.4. Briefly vortex the tube and then do a quick spin (less than 5000xg) to concentrate the liquid at the bottom.5. Store the suspended plasmid at -20°C. The DNA is stable for at least one year from date of shipping when stored at -20°C.
RefSeq:	NM_017465.3
RefSeq Size:	1127 bp
RefSeq ORF:	1017 bp
Locus ID:	54200
UniProt ID:	O35400
Cytogenetics:	7 B3
Gene Summary:	Sulfotransferase that utilizes 3'-phospho-5'-adenylyl sulfate (PAPS) as sulfonate donor to catalyze the sulfate conjugation of many hormones, neurotransmitters, drugs and xenobiotic compounds. Sulfonation increases the water solubility of most compounds, and therefore their renal excretion, but it can also result in bioactivation to form active metabolites. Sulfates hydroxysteroids such as dehydroepiandrosterone. Isoform 1 is required for production of cholesterol sulfate essential for normal skin development whereas isoform 2 produces pregnenolone sulfate, an essential neurosteroid during development of the central nervous system. Plays a role in epidermal cholesterol metabolism and in the regulation of epidermal proliferation and differentiation.[UniProtKB/Swiss-Prot Function]