

Product datasheet for **MG205030**

Phyh (NM_010726) Mouse Tagged ORF Clone

Product data:

Product Type:	Expression Plasmids
Product Name:	Phyh (NM_010726) Mouse Tagged ORF Clone
Tag:	TurboGFP
Symbol:	Phyh
Synonyms:	A1256161; A1265699; Lnap1; PAHX
Mammalian Cell Selection:	Neomycin
Vector:	pCMV6-AC-GFP (PS100010)
E. coli Selection:	Ampicillin (100 ug/mL)
ORF Nucleotide Sequence:	>MG205030 representing NM_010726 Red=Cloning site Blue=ORF Green=Tags(s)

TTTTGTAATACGACTCACTATAGGGCGGCCGGAATTCGTCGACTGGATCCGGTACCGAGGAGATCTGCC
GCC**CGATCGCC**

ATGAATCTTACGCGCGCCGGCGCCGGCTGCAGGTCTTCTGGGACACCTCGGCCGACCCTCGGCCCAA
CGATTGTAGCCCAGCCTGTATCAGGGTTGGCTTCCCTGCCAGTTTCCAGCCTGAACAATTCCAGTATA
TCTGGATAATAATGTCCTCACCTGGAGCAGAGAAAATTTATGAAGAAAATGGGTTTCTCGTTATTAAG
AATCTGGTATCTGATGATGACATTCAACGTTTTTCGAGCAGAGTTTGAAGAATCTGCAGAGAGGAGTGA
AACCACCAGGGATCGTTATAATGAGAGATGTGGCCCTTGCAAAACAGGATTATATGCCAAGTGATAGGAT
GGTTTCAAAGATCCAGGATTTCCAAGAAGATGAGGAGCTTTCAGATACTGCCTTCTCCCGAGATTCTG
AAGTATGTGGAGTGTTCCTACTGGACCAATATTATGGCTCTGCATGGGATGCTGATCAACAAGCCTCCAG
ATGTTGGCAAGAAGACATCCCAGCATCCCTTGATCAGGATCTGCACTATTTCCCTTCCGACCTAGCAA
CCTAATTGTTTGTGCTTGGACAGCCATGGAGCACATTGACAGAAACAACGGTTGTCTGGTTGTGCTCCCA
GGTACCCACAAAGGCACTCTGAAGCCACATGATTACCCCAAGTGGGAGGGAGGTGTTAACAAAATGTACC
ATGGCATCCAAGACTATGACCCCAACAGCCCCGGGTCCACCTAGTGATGGAAAAGGGCGATACTGTTTT
CTTCCACCCTCTGCTCATCCATGGATCTGGTCGGAACAAAACCAAGGCTTCCGAAAGCAATTTCTGC
CACTTCGGCAGCTCTGACTGCCAGTGTATCGATGTGAGCGGCACCAGTCAAGAAAATATTGCAAGGGAAG
TTGTCGAGATGGCAGAGAAAAAGTATGGATTCCAAGGAGTCATGGACTTTAAGGACACTTGATATTTCCG
AAGCCGACTTGTGAAAGGAGAAAAGAATAAACATT

ACGCGTACGCGGCCGCTCGAG - GFP Tag - GTTTAA



[View online »](#)

Protein Sequence: >MG205030 representing NM_010726
 Red=Cloning site Green=Tags(s)

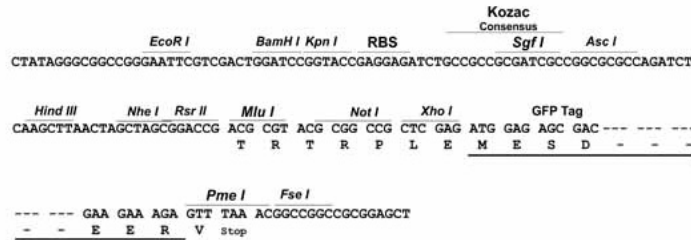
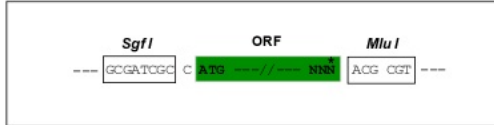
MNLTRAGARLQVLLGHLGRPSAPTIVAQPVSGLASPASFQPEQFQYTLDNNVLTLEQRKFEENGFLVIK
 NLVSDDDIQRFAEFERICREEVKPPGIVIMRDVALAKQDYMPSDRMVSKIQDFQEDELFRYCLLPEIL
 KYVECF TGNIMALHGMLINKPPDVGKKT SRHPLHQDLHYFFRPSNLIVCAWTAMEHIDRNNGLVLP
 GTHKGTLPKPHDYPKWEGVNMKMYHGIQDYDPNSPRVHLVMEKGDVVFHPLL IHGSGRNKTQGFRAKAI SC
 HFGSSDCQCIDVSGTSQENIAREVVEMAEEKYGFQGVMDFKDTWIFRSRLVKGERINI

TRTRPLE - GFP Tag - V

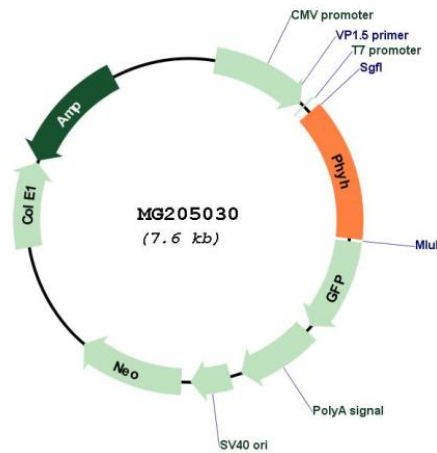
Restriction Sites: SgfI-MluI

Cloning Scheme:

Cloning sites used for ORF Shuttling:



Plasmid Map:



ACCN: NM_010726

ORF Size: 1014 bp

OTI Disclaimer:	The molecular sequence of this clone aligns with the gene accession number as a point of reference only. However, individual transcript sequences of the same gene can differ through naturally occurring variations (e.g. polymorphisms), each with its own valid existence. This clone is substantially in agreement with the reference, but a complete review of all prevailing variants is recommended prior to use. More info
OTI Annotation:	This clone was engineered to express the complete ORF with an expression tag. Expression varies depending on the nature of the gene.
Components:	The ORF clone is ion-exchange column purified and shipped in a 2D barcoded Matrix tube containing 10ug of transfection-ready, dried plasmid DNA (reconstitute with 100 ul of water).
Reconstitution Method:	<ol style="list-style-type: none">1. Centrifuge at 5,000xg for 5min.2. Carefully open the tube and add 100ul of sterile water to dissolve the DNA.3. Close the tube and incubate for 10 minutes at room temperature.4. Briefly vortex the tube and then do a quick spin (less than 5000xg) to concentrate the liquid at the bottom.5. Store the suspended plasmid at -20°C. The DNA is stable for at least one year from date of shipping when stored at -20°C.
RefSeq:	NM_010726.1 , NP_034856.1
RefSeq Size:	1419 bp
RefSeq ORF:	1017 bp
Locus ID:	16922
UniProt ID:	O35386
Cytogenetics:	2 A1
Gene Summary:	Converts phytanoyl-CoA to 2-hydroxyphytanoyl-CoA.[UniProtKB/Swiss-Prot Function]