

## Product datasheet for **MG205015**

### Car14 (NM\_011797) Mouse Tagged ORF Clone

#### Product data:

Product Type:	Expression Plasmids
Product Name:	Car14 (NM_011797) Mouse Tagged ORF Clone
Tag:	TurboGFP
Symbol:	Car14
Synonyms:	AW536446; CA-XIV; Ca14
Mammalian Cell Selection:	Neomycin
Vector:	pCMV6-AC-GFP (PS100010)
E. coli Selection:	Ampicillin (100 ug/mL)
ORF Nucleotide Sequence:	>MG205015 representing NM_011797 Red=Cloning site Blue=ORF Green=Tags(s)

TTTTGTAATACGACTCACTATAGGGCGGCCGGAATTCGTCGACTGGATCCGGTACCGAGGAGATCTGCC  
GCC**CGATCGCC**

ATGTTGTTCTTCGCTCCTCTGTTAAAGGTGACTTGGATCCTGGCTGCAGATGGGGTCCACTGGACAT  
ATGAAGGCCACACGGTCAGGACCATTGGCCAACCTCTTATCCTGAGTGTGGAGGCGATGCCAGTCCCC  
CATCAATATCCAGACAGACAGTGTGATATTTGACCCCGATCTGCCTGCTGTACAGCCCCATGGATATGAC  
CAGCTTGGGACTGAGCCTTTGGATCTACACAATAATGGCCATACAGTGCAGCTTTCCTGCCCCCAACCC  
TGCACCTGGGTGGACTGCCCGAAAATACACAGCAGCCAGCTCCACCTGCACTGGGGTCCAGAGAGGATC  
CCTCGAGGGATCAGAGCACCAGATCAACAGTGAAGCCACGGCTGCGGAGCTCCACGTGGTCACTATGAC  
TCCAGTCTACAGCAGCTTGAAGTGAAGGAGCTCAGAAGCCACAGGGCCTGGCTGTCTAGGCATCTCA  
TTGAGGTGGGCGAGACTGAGAATCCAGCTTATGATCACATTCTGAGTCGTCTACATGAAATAAGATACAA  
AGATCAGAAGACCTCTGTGCCTCCCTCAGCGTGAGAGAGCTGTTCCCAACAGCTGGAGCAATTTCTTC  
CGCTACAACGGCTCACTCACAACCCCCCTGCTACCAGAGTGTGCTCTGGACAGTCTTCAACAGAAGGG  
CCCAGATTTCAATGGGACAGTTAGAGAAGCTCCAGGAGACATTGTCTCTACAGAAGAGGACCCCTCTGA  
GCCCTTGTACAGAACTACAGAGTCCCCAGCCTCTCAACCAGAGGACCATCTTTGCTTCTTTTCAATCAA  
GCAGGACCACTGTATACCACAGGAGAGATGCTGGGTCTAGGTGTGGGAATCTTGGCTGGATGTCTTTGCC  
TTCTGCTGGCTGTTTATTTTCATCGCTCAAAAAATTAGGAAGAAGCGGCTGGGAAACAGGAAAAGTGTGGT  
TTTCACCTCTGCTCGGGCTACCACAGAGGCG

**ACGCGT**ACGCGGCCGCTCGAG - GFP Tag - GTTTAA



[View online »](#)

**Protein Sequence:** >MG205015 representing NM\_011797  
 Red=Cloning site Green=Tags(s)

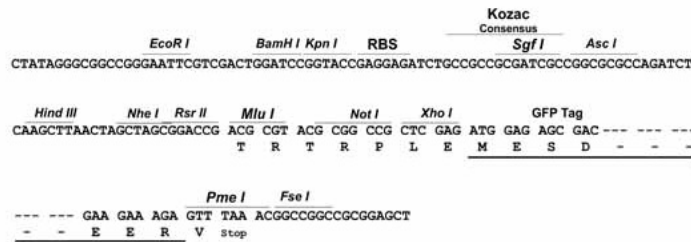
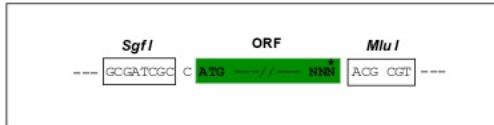
MLFFALLLKVTWILAADGGHHWTYEGPHGQDHWPTSYPECGGDAQSPINIQTDSVIFDPLPAVQPHGYD  
 QLGTEPLDLHNNGHTVQLSLPPTLHLGGLPRKYTAAQLHLHWGQRGSLEGSEHQINSEATAAELHVVHYD  
 SQSYSSLSEAAQKPQGLAVLGILIEVGETENPAYDHILSRLHEIRYKDQKTSVPPF SVRELFPQLEQFF  
 RYNGSLTTPPCYQSVLWTVFNRAQISMGQLEKLQETLSSTEEDPSEPLVQNYRVPQLNQRITIFASFIQ  
 AGPLYTTGEMLGLGVGILAGCLLLAVYFIAQKIRKKRLGNRKS VVFTSARATTEA

TRTRPLE - GFP Tag - V

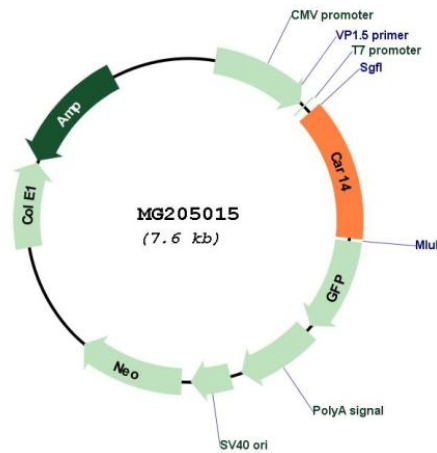
**Restriction Sites:** SgfI-MluI

**Cloning Scheme:**

Cloning sites used for ORF Shuttling:



**Plasmid Map:**



**ACCN:** NM\_011797

**ORF Size:** 1011 bp

<b>OTI Disclaimer:</b>	The molecular sequence of this clone aligns with the gene accession number as a point of reference only. However, individual transcript sequences of the same gene can differ through naturally occurring variations (e.g. polymorphisms), each with its own valid existence. This clone is substantially in agreement with the reference, but a complete review of all prevailing variants is recommended prior to use. <a href="#">More info</a>
<b>OTI Annotation:</b>	This clone was engineered to express the complete ORF with an expression tag. Expression varies depending on the nature of the gene.
<b>Components:</b>	The ORF clone is ion-exchange column purified and shipped in a 2D barcoded Matrix tube containing 10ug of transfection-ready, dried plasmid DNA (reconstitute with 100 ul of water).
<b>Reconstitution Method:</b>	<ol style="list-style-type: none"><li>1. Centrifuge at 5,000xg for 5min.</li><li>2. Carefully open the tube and add 100ul of sterile water to dissolve the DNA.</li><li>3. Close the tube and incubate for 10 minutes at room temperature.</li><li>4. Briefly vortex the tube and then do a quick spin (less than 5000xg) to concentrate the liquid at the bottom.</li><li>5. Store the suspended plasmid at -20°C. The DNA is stable for at least one year from date of shipping when stored at -20°C.</li></ol>
<b>RefSeq:</b>	<a href="#">NM_011797.3</a>
<b>RefSeq Size:</b>	1625 bp
<b>RefSeq ORF:</b>	1014 bp
<b>Locus ID:</b>	23831
<b>UniProt ID:</b>	<a href="#">Q9WWT6</a>
<b>Cytogenetics:</b>	3 F2.1
<b>Gene Summary:</b>	Reversible hydration of carbon dioxide.[UniProtKB/Swiss-Prot Function]