

Product datasheet for **MG205006**

Neurod6 (NM_009717) Mouse Tagged ORF Clone

Product data:

Product Type: Expression Plasmids
Product Name: Neurod6 (NM_009717) Mouse Tagged ORF Clone
Tag: TurboGFP
Symbol: Neurod6
Synonyms: Atoh2; bHLHa2; Math-2; Math2; Nex; Nex1m
Mammalian Cell Selection: Neomycin
Vector: pCMV6-AC-GFP (PS100010)
E. coli Selection: Ampicillin (100 ug/mL)
ORF Nucleotide Sequence: >MG205006 representing NM_009717
Red=Cloning site Blue=ORF Green=Tags(s)

TTTTGTAATACGACTCACTATAGGGCGGCCGGAATTCGTCGACTGGATCCGGTACCGAGGAGATCTGCC
GCC**CGATCGCC**

ATGTTAACTACCGTTTGACGAGTCTGTCGTAATGCCGAATCCAGATGTGCAGAAAGTTTGCTAGAC
AATGTGAGGACCAGAAACAAATTAAGAAACCAGAGAGCTTCCAAAACAAGTTGCCTTCGAGGAAAGAG
CATTTAAAGGGCCCTGGAGAAGAAACCGAGAAAGAAGAGGAGGAAGAAGACAGAGAGGAAGAAGATGAG
AATGGCTTGTCCAGAAGGAGGGGCTCAGGAAAAAAGACCACCAAACACTGACTGGAAAGGGTCAAGT
TCAGGAGACAGGAAGCTAATGCGCGCAGAGGAACCGGATGCACGGCCTCAATGATGCTCTGGACAATTT
GCGAAAAGTGGTCCCCTGTTACTCTAAAACCCAAAAACTGTCCAAAATAGAACTTTACGACTGGCCAAA
AATTACATCTGGGCACTTCTGAAATCTGAGGATTGGCAAGAGACCGGATCTGCTCACGTTCTGCCAAA
ACTTATGCAAAGGTCTTCCAGCCAACACAACTTGGTGGCAGGCTGCTTACAGCTCAACGCCAGAAG
TTTCTGATGGGTGAGGTGGGGAGGCTGCCACCACACAAGGTCACTACTCCACATTCTACCCACCC
TACCACAGCCCTGAGCTGGCCACTCCCCAGGGCATGGGACTCTTGATAATTCGAAGTCCATGAAACCT
ACAATTACTGCAGTGCATATGAATCCTTCTATGAAAGTACCTCCCTGAGTGTGCCAGCCCTCAGTTTGA
AGGTCCCTTAAGTCCCTCCCAATTAACATAATGGGATATTTCCCTGAAGCAAGAAGAAACCTTGGAC
TATGGCAAAAATTACAATTATGGCATGCATTACTGTGCAGTGCCACCCAGGGGTCCCCTTGGCAGGGTG
CCATGTTCAAGTTGCCACCACAGCACTTCCCTTACGACTTACATCTGCGCAGCCAATCTCTCACTAT
GCAAGATGAATTAATGCAGTTTTTCATAAT

ACGCGTACGCGGCCGCTCGAG - GFP Tag - GTTTAA



[View online »](#)

Protein Sequence: >MG205006 representing NM_009717
 Red=Cloning site Green=Tags(s)

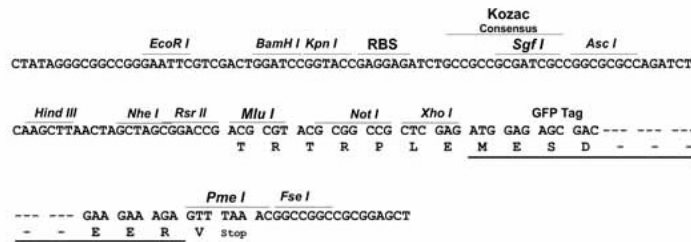
MLTLPFDESVMVPESQMCRKFARQCEDQKQIKKPESFPKQVVLRGKSIKRAPGEETEKEEEEEEDREEEDE
 NGLSRRRLRKKKTTKLRLEVRVFRRQEANARERNRMHGLNDALDNLKVVPCYSKTQKLSKIETLRLAK
 NYIWALSEILRIGKRPDLLTFVQNLCKGLSQPTTNLVAGCLQLNARSFLMGQGGEAAHHTRSPYSTFYPP
 YHSPELATPPGHGTLDNSKSMKPYNYCSAYESFYESTSPECASPFEGPLSPPPINYNGIFSLKQEETLD
 YGKNYNYGMHYCAVPPRGPLGQGAMFRLPTDHFPPYDLHLRSQSLTMQDELNAVFNH

TRTRPLE - GFP Tag - V

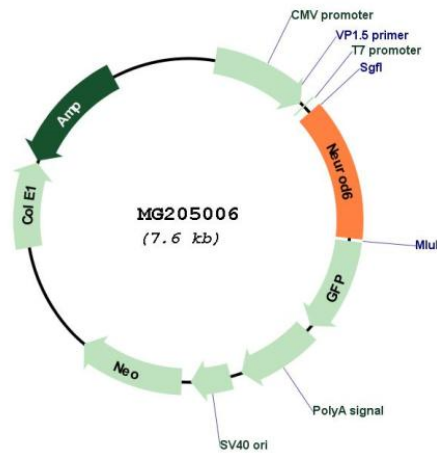
Restriction Sites: SgfI-MluI

Cloning Scheme:

Cloning sites used for ORF Shuttling:



Plasmid Map:



ACCN: NM_009717

ORF Size: 1011 bp

OTI Disclaimer:	The molecular sequence of this clone aligns with the gene accession number as a point of reference only. However, individual transcript sequences of the same gene can differ through naturally occurring variations (e.g. polymorphisms), each with its own valid existence. This clone is substantially in agreement with the reference, but a complete review of all prevailing variants is recommended prior to use. More info
OTI Annotation:	This clone was engineered to express the complete ORF with an expression tag. Expression varies depending on the nature of the gene.
Components:	The ORF clone is ion-exchange column purified and shipped in a 2D barcoded Matrix tube containing 10ug of transfection-ready, dried plasmid DNA (reconstitute with 100 ul of water).
Reconstitution Method:	<ol style="list-style-type: none">1. Centrifuge at 5,000xg for 5min.2. Carefully open the tube and add 100ul of sterile water to dissolve the DNA.3. Close the tube and incubate for 10 minutes at room temperature.4. Briefly vortex the tube and then do a quick spin (less than 5000xg) to concentrate the liquid at the bottom.5. Store the suspended plasmid at -20°C. The DNA is stable for at least one year from date of shipping when stored at -20°C.
RefSeq:	NM_009717.2
RefSeq Size:	1957 bp
RefSeq ORF:	1014 bp
Locus ID:	11922
UniProt ID:	P48986
Cytogenetics:	6 27.53 cM
Gene Summary:	Activates E box-dependent transcription in collaboration with TCF3/E47. May be a trans-acting factor involved in the development and maintenance of the mammalian nervous system. Transactivates the promoter of its own gene.[UniProtKB/Swiss-Prot Function]