

Product datasheet for **MG204993**

Osgin2 (BC010311) Mouse Tagged ORF Clone

Product data:

Product Type:	Expression Plasmids
Product Name:	Osgin2 (BC010311) Mouse Tagged ORF Clone
Tag:	TurboGFP
Symbol:	Osgin2
Synonyms:	MGC11786
Mammalian Cell Selection:	Neomycin
Vector:	pCMV6-AC-GFP (PS100010)
E. coli Selection:	Ampicillin (100 ug/mL)
ORF Nucleotide Sequence:	>MG204993 representing BC010311 Red=Cloning site Blue=ORF Green=Tags(s)

TTTTGTAATACGACTCACTATAGGGCGCCGGGAATTCGTCGACTGGATCCGGTACCGAGGAGATCTGCC
GCC**CGATCGCC**

ATGCCGGAGGAAATAGCTCGCTACTACAAGCACTACGTAAGGTCATGGGCCTTCAGAAGAATTTTCGAG
AGAATACTTACATAACCTCTGTATCAAGACTCTATAGAGACCAAGGTGATAACGGTAGTCAAGACAGAGA
TATTTCCACAAAGCATTTACAGAACCAGAAGTCAAATTTATCAAGAGAACTGGGAAATCAGAGGCTAT
CAGCGAATAGCAGGTGGTTCTCATGTTCCCTTTTGCCCTTTGCTGAGAATGTAGCTCTTGCAACTGGAA
CTTTGGATTCTCCTGCCATCTGGAAGTTGAAGGGGAAGAGTTTCCGTTTGTGTTTCATTGATGCCTGA
GTTTGGAGCTGCTATAAACAAGGAAAGCTGTGTGGCAGAGTGGACCCAGTGTGATTGTAGGTTCCGGC
CTTACTGCCGCTGATGCAGTGTCTGTGCCATAACAATAATATCCCTGTGATCCACGTGTTTCGCAGAC
GAGTAAGTATCAAGCTTAATTTTCAAACAGCTTCCAAAAAGCTGTATCCTGAGTACCACAAAGTCTA
CCATATGATGTGTAGTCAGTCTACTCTGCAGACTCAGGTCTCTGTCTGATTATACCAGCTTTCCTGAG
CACCGTGTGCTTTCCTTTAAGGCAGACATGAAATGCATTCTTCAAAGTGTCTCTGGATTGAAGAAAATAT
TTAAGTGTCTGCAGCTGAATCTTGATAGGTTCTCATCTAACCTATCTTTTCTAAAGGAACAAGGGTG
TTACCTAGGCCGTAAGTCAAGCCAGCCAATAACATGCAAGGTAACCCCTGTGGAGGTTGATGCATACACC
TATGAATGTGTTAAAGAAGCCAATCTTTTGTCTTTGGCCCTTTGGTTGGAGATAATTTCTGTTTCGATTCT
TAAAGGGAGGGGCATTGGGTGTTACTCGCTGTTTGGCTACAAGACAGAAGAAAAGCAGCATTGTTTGT
TCAAAGAGGAGGAGGAGATGGGGTAGCT

ACGCGTACGCGGCCGCTCGAG - GFP Tag - GTTTAA



[View online »](#)

Protein Sequence: >MG204993 representing BC010311
 Red=Cloning site Green=Tags(s)

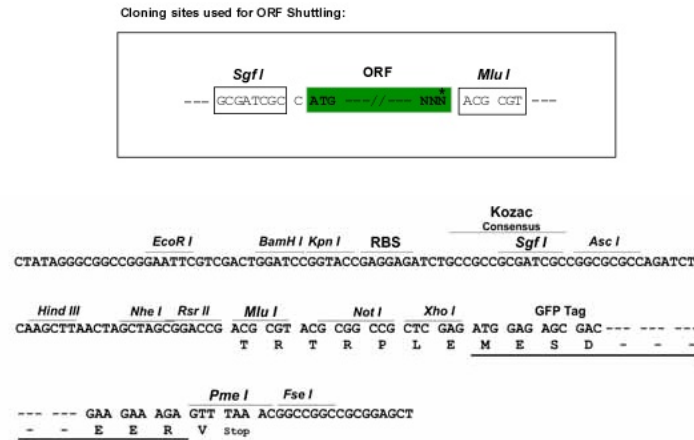
MPEEIARYYKHVYKVMGLQKNFRENTYITSVSRLYRDQGDNGSQDRDISTKHLQNQKSKFIKRNWEIRGY
 QRIAGGSHVFPCLFAENVALATGTLDSPAHLEVEGEFFPFVHSMPEFGAAINKGLKGRVDPVLIVGSG
 LTAADAVLCAYNNNIPVIHVFRRRVTDPSLIFKQLPKKLYPEYHKVYHMMCSQSYSDSGPLSDYTSFPE
 HRVLSFKADMKCILQSVSGLKKIFKLSAAVILIGSHPNLSFLKEQGCYLGRNSSQPITCKGNPVEVDAYT
 YECVKEANL FALGPLVGDNFVRF LKGGALGVTRCLATRQKKKQHLFVQRGGGDGVA

TRTRPLE - GFP Tag - V

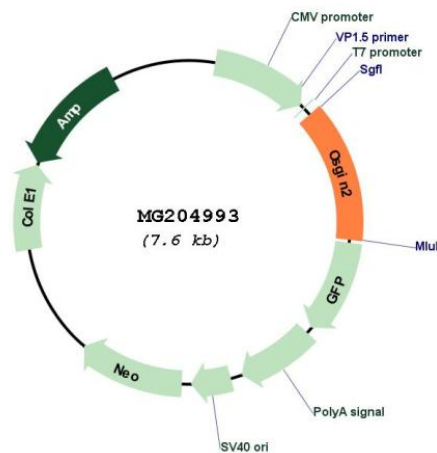
Restriction Sites:

SgfI-MluI

Cloning Scheme:



Plasmid Map:



ACCN: BC010311

ORF Size: 1010 bp

OTI Disclaimer:	The molecular sequence of this clone aligns with the gene accession number as a point of reference only. However, individual transcript sequences of the same gene can differ through naturally occurring variations (e.g. polymorphisms), each with its own valid existence. This clone is substantially in agreement with the reference, but a complete review of all prevailing variants is recommended prior to use. More info
OTI Annotation:	This clone was engineered to express the complete ORF with an expression tag. Expression varies depending on the nature of the gene.
Components:	The ORF clone is ion-exchange column purified and shipped in a 2D barcoded Matrix tube containing 10ug of transfection-ready, dried plasmid DNA (reconstitute with 100 ul of water).
Reconstitution Method:	<ol style="list-style-type: none">1. Centrifuge at 5,000xg for 5min.2. Carefully open the tube and add 100ul of sterile water to dissolve the DNA.3. Close the tube and incubate for 10 minutes at room temperature.4. Briefly vortex the tube and then do a quick spin (less than 5000xg) to concentrate the liquid at the bottom.5. Store the suspended plasmid at -20°C. The DNA is stable for at least one year from date of shipping when stored at -20°C.
RefSeq:	BC010311 , AAH10311
RefSeq Size:	1981 bp
RefSeq ORF:	1010 bp
Locus ID:	209212
Cytogenetics:	4 A2