

Product datasheet for **MG204963**

Rdh13 (NM_175372) Mouse Tagged ORF Clone

Product data:

Product Type:	Expression Plasmids
Product Name:	Rdh13 (NM_175372) Mouse Tagged ORF Clone
Tag:	TurboGFP
Symbol:	Rdh13
Synonyms:	8430425D21Rik
Mammalian Cell Selection:	Neomycin
Vector:	pCMV6-AC-GFP (PS100010)
E. coli Selection:	Ampicillin (100 ug/mL)
ORF Nucleotide Sequence:	>MG204963 representing NM_175372 Red=Cloning site Blue=ORF Green=Tags(s)

TTTTGTAATACGACTCACTATAGGGCGGCCGGAATTCGTCGACTGGATCCGGTACCGAGGAGATCTGCC
GCC**CGATCGCC**

ATGAGCCGCTTTCTGCTGCCGGTGTCCGTAGTGGGCACGGTGATCGGCCGCACCGTGTCTCAAGGACT
ATGTCGCTGGTGGGGCTTGCCAGCAAGGCCACCATACCTGGGAAGACTGTTATCGTGACAGGAGCCAA
CACAGGCATCGGGAAACAACTGCTTTGGAGCTGGCTAAAAGAGGAGGCAACGTCATTCTGGCCTGTCGT
GACATGGAGAAGTGGGAGGTGGCTGCAAAGGACATTCGAGGAGAGACCTGAATCCCGCGTACGTGCTG
AACGCCTAGACTTGGCTTCCCTCAAGTCCATCCGAGAGTTTGCAAGGAAGTTCATTAAGAGGAGGAGCG
AGTAGACATTCTGGTCAACAACGCAGCCGTGATGCGGTGCCACACTGGACCACTGAGGATGGCTTTGAG
ATGCAGTTTGGTGTCAACTACTTGGGGCATTCTATTGACAAATTTGCTGTTGGACAAGCTGAAGGCC
CGGCCCATCACGCATCATCAATCTCTCGTCCCTGGCTCACGTTGCTGGGCACATAGACTTCGAGGACTT
GAACTGGCAGATGAAAAAGTATGACACCAAGGCAGCCTACTGCCAGAGCAAGTTGGCTGTTGCTCTTCC
ACCAAGGAGCTGAGCCACCGGCTGCAAGGCTCTGGTGTGACGGTCAATGCACTGCACCCTGGTGTGGCCA
GGACAGAGCTGGGGCGACATACGGGCATGCACAACTCTGCCTTCTCTGGCTTCATGCTTGGGCCCTTCTT
CTGGCTGCTGTTCAAGAGTCCCCAGCTGGCGGCCAGCCAGCACATATCTGGCCGTGGCAGAAGAAGT
GAGAATGTTTCGGGGAAGTACTTTGATGGACTCAGAGAGAAGGCTCCATCTCCTGAGGCTGAAGATGAGG
AAGTAGCCCGCAGACTTTGGACGAAAGTGCCCGTTTGGTGGGCTTGGCCATGGCTCATGGATCCCCTGG
GAGAGGACATGCCATTCCAGAG

ACGCGTACGCGGCCGCTCGAG - GFP Tag - GTTTAA



[View online »](#)

Protein Sequence: >MG204963 representing NM_175372
 Red=Cloning site Green=Tags(s)

MSRFLLPVSVVGTVIGGTVLLKDYVAGGACPSKATIPGKTVIVTGANTGIGKQTALELAKRGGNVILACR
 DMEKCEVAAKDIRGETLNPRVRAERLDLASLKSIREFARKVIKEEERVDILVNNAVMRCPHWTEDGFE
 MQFGVNYLGHFLLTNLLLDKLGKASAPSRINLSSLAHVAGHIDFEDLNWQMKKYDTKAAQCQSKLAVVLF
 TKELSHRLQSGSVTVNALHPGVARTELGRHTGMHNSAFSGFMLGPFFWLLFKSPQLAAQPSTYLVAEEL
 ENVSGKYFDGLREKAPSPEAEDEEVARRLWTESARLVGLAMAHGSPGRGHAIPR

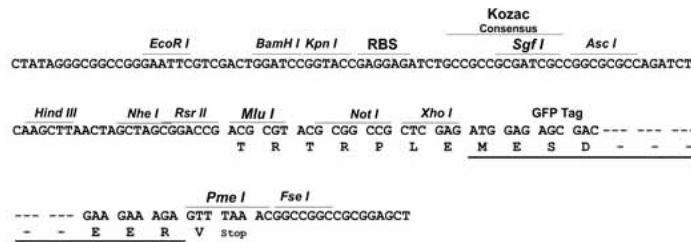
TRTRPLE - GFP Tag - V

Restriction Sites:

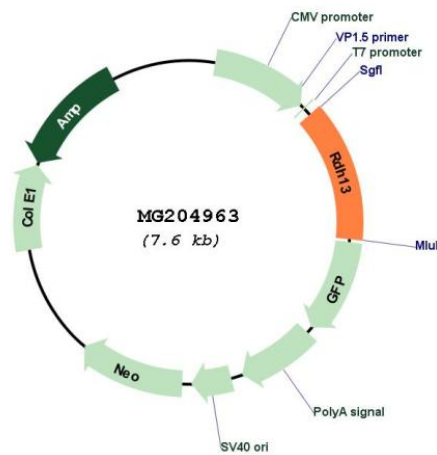
SgfI-MluI

Cloning Scheme:

Cloning sites used for ORF Shuttling:



Plasmid Map:



ACCN: NM_175372

ORF Size: 1002 bp

OTI Disclaimer:	The molecular sequence of this clone aligns with the gene accession number as a point of reference only. However, individual transcript sequences of the same gene can differ through naturally occurring variations (e.g. polymorphisms), each with its own valid existence. This clone is substantially in agreement with the reference, but a complete review of all prevailing variants is recommended prior to use. More info
OTI Annotation:	This clone was engineered to express the complete ORF with an expression tag. Expression varies depending on the nature of the gene.
Components:	The ORF clone is ion-exchange column purified and shipped in a 2D barcoded Matrix tube containing 10ug of transfection-ready, dried plasmid DNA (reconstitute with 100 ul of water).
Reconstitution Method:	<ol style="list-style-type: none">1. Centrifuge at 5,000xg for 5min.2. Carefully open the tube and add 100ul of sterile water to dissolve the DNA.3. Close the tube and incubate for 10 minutes at room temperature.4. Briefly vortex the tube and then do a quick spin (less than 5000xg) to concentrate the liquid at the bottom.5. Store the suspended plasmid at -20°C. The DNA is stable for at least one year from date of shipping when stored at -20°C.
RefSeq:	NM_175372.4
RefSeq Size:	3055 bp
RefSeq ORF:	1005 bp
Locus ID:	108841
UniProt ID:	Q8CEE7
Cytogenetics:	7 A1
Gene Summary:	Retinol dehydrogenase with a clear preference for NADP. Oxidizes all-trans-retinol, but seems to reduce all-trans-retinal with much higher efficiency. Has no activity towards steroid. [UniProtKB/Swiss-Prot Function]