

Product datasheet for **MG204944**

Wdr54 (NM_023790) Mouse Tagged ORF Clone

Product data:

Product Type:	Expression Plasmids
Product Name:	Wdr54 (NM_023790) Mouse Tagged ORF Clone
Tag:	TurboGFP
Symbol:	Wdr54
Synonyms:	1700030E05Rik
Mammalian Cell Selection:	Neomycin
Vector:	pCMV6-AC-GFP (PS100010)
E. coli Selection:	Ampicillin (100 ug/mL)
ORF Nucleotide Sequence:	>MG204944 representing NM_023790 Red=Cloning site Blue=ORF Green=Tags(s)

TTTTGTAATACGACTCACTATAGGGCGGCCGGAATTCGTCGACTGGATCCGGTACCGAGGAGATCTGCC
GCC**CGATCGCC**

ATGTTCCGCCGAGCGCTCCATCCCCTTCGTAGCTCTGCCGCCCTGTCTAACACCTCAGTGTAC
TGCAGCTGCCAGCCCGTGATCTCACGATTTTGGGGTGGTTCATGGACCGAGCGCCAGCTTCTCAGTGC
TGCCCTGAGGGTGTGCCCTTGGCCAGCGCCAGCTCCACGTTAAAGAGGGTGTGGAGTGAAGTCCCA
CTTATCACTCAGGTTCACTGGTGTCTCCCTTCAGAGTACTGCTGGTCTCACCTCGCATCGAGGGA
TACAGATGTATGAGTCTGATGGCTCCGTCATGGTTTATTGGCACGCTTGGACTCAGGCGATGCTTCTTC
AGTACAGGCTATGTTGCCCCGAGGAATTGCTGCCAGCGTCCACTTCATCTGTGTGGGAACGTGTTCCGGT
CGAGTACTGGTCTTTGATATCCCCGCTAAGGGTCCCAACATTGTAAGTACTCAGCGAGGAACTGGCTGGGACC
AGACACCAATCACAGATATTGCCACTGAGCGTGCCAGGGGAGGATGGTGTGCTGACATGGTGACAGC
AGATGACTCGGGTGTCTGTGTCTGGAGGTCGGGACCTGAGTTCACCTTACTGACCCGAATACCAGGA
TTCGGGGTCCCATGCCCCCTGTGCAGCTGTGGCAGGGGATCGTGGCAGCAGGGTATGAAATGGGCAAG
TGCCCTGTATGATGCCAGCACAGGGGCCCTCCACGTCCAGATCAGTGCCACGCCCGGACCATCTCTGC
CCTGGACCTCGCTCCAGAGGTGGCAAGCTACTGTCTGCAGCTGAGGACACCTTTGTGCACATCTGGAAG
CTGAACAGAAACCCAGAAAGTGGCTCTATTGAGGTGGAACACTGCCATGGTGAATGATTTCTGACACCC
AGGTGTGTGGTGTCTGGTTCTGTGATCCATTGGGCAGCTCCTTTGCTGTGACAGGTTATGACCTGGCTGA
GATCCTGAGATTTGGCACTGTC

ACGCGTACGCGGCCGCTCGAG - GFP Tag - GTTTAA



[View online »](#)

Protein Sequence: >MG204944 representing NM_023790
 Red=Cloning site Green=Tags(s)

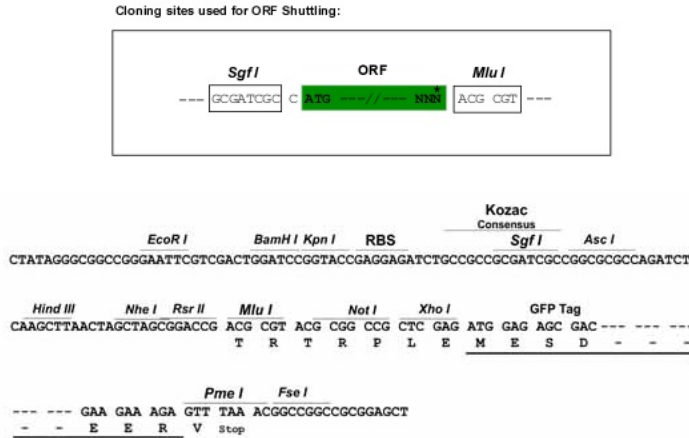
MFRRERSIPLRSSAAALSNL SVLQLPARDLTHFGVVHGPSAQLLSAAPEGVPLAQRQLHVKEGAGVSPPLITQVHWCVLPFRVLLVLTSHRGIQMYESDGSVMVYWHALDSGDASSVQAMFARGIAASVHFICVGTCSGRVLVFDIPAKGNIVLSEELAGHQTPITDIATERAQDQDGVADMVTADDSGLVCVWRSQPEFTLLTRIPGFGVPCPSVQLWQGIVAAGYGNQVRLYDASTGALHVQISAHARTISALDLAPEVKGKLLSAAEDTFVHIWKLNLRNPESGSIEVEHCHGECISDTQVCGARFCPLGSSFAVTGYDLAEILRFGTV

TRTRPLE - GFP Tag - V

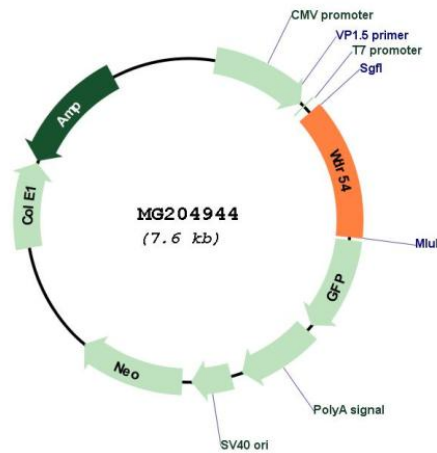
Restriction Sites:

SgfI-MluI

Cloning Scheme:



Plasmid Map:



ACCN: NM_023790

ORF Size: 1002 bp

OTI Disclaimer:	The molecular sequence of this clone aligns with the gene accession number as a point of reference only. However, individual transcript sequences of the same gene can differ through naturally occurring variations (e.g. polymorphisms), each with its own valid existence. This clone is substantially in agreement with the reference, but a complete review of all prevailing variants is recommended prior to use. More info
OTI Annotation:	This clone was engineered to express the complete ORF with an expression tag. Expression varies depending on the nature of the gene.
Components:	The ORF clone is ion-exchange column purified and shipped in a 2D barcoded Matrix tube containing 10ug of transfection-ready, dried plasmid DNA (reconstitute with 100 ul of water).
Reconstitution Method:	<ol style="list-style-type: none">1. Centrifuge at 5,000xg for 5min.2. Carefully open the tube and add 100ul of sterile water to dissolve the DNA.3. Close the tube and incubate for 10 minutes at room temperature.4. Briefly vortex the tube and then do a quick spin (less than 5000xg) to concentrate the liquid at the bottom.5. Store the suspended plasmid at -20°C. The DNA is stable for at least one year from date of shipping when stored at -20°C.
RefSeq:	NM_023790.2
RefSeq Size:	1230 bp
RefSeq ORF:	1005 bp
Locus ID:	75659
UniProt ID:	Q9R0D8
Cytogenetics:	6 C3
Gene Summary:	When cross-linked to form dimers and trimers, it has a regulatory effect on ERK signaling pathway activity in response to EGF stimulation. Colocalizes with the EGF receptor in WDR54-specific vesicle where it sustains the internalization and controls the degradation of the EGF receptor after EGF stimulation.[UniProtKB/Swiss-Prot Function]