

Product datasheet for **MG204910**

Gipc1 (NM_018771) Mouse Tagged ORF Clone

Product data:

Product Type:	Expression Plasmids
Product Name:	Gipc1 (NM_018771) Mouse Tagged ORF Clone
Tag:	TurboGFP
Symbol:	Gipc1
Synonyms:	GIPC; Glut1CIP; Rgs19ip1; Semcap1; TaxIP2; TIP-2
Mammalian Cell Selection:	Neomycin
Vector:	pCMV6-AC-GFP (PS100010)
E. coli Selection:	Ampicillin (100 ug/mL)
ORF Nucleotide Sequence:	>MG204910 representing NM_018771 Red=Cloning site Blue=ORF Green=Tags(s)

TTTTGTAATACGACTCACTATAGGGCGGCCGGAATTCGTCGACTGGATCCGGTACCGAGGAGATCTGCC
GCC**CGATCGCC**

ATGCCACTGGGACTGGGGCGAAGGAAGAAAGCACCGCCTCTGGTGGAAAATGAGGAGGGGAGCCAAGCC
GGAGTGGGCTGGGTGTTGGGGAGCCTGGGCCCTGGGTGGGAGCGCAGCAGGAGAATCCCAGATGGGCTT
GCCCCACCTCCTGCTGCCCTCCGGCTCGCTCGTGTCCATACCCAGCTGGCCACGGCAGCCCCACA
GGCCGCATCGAGGGCTTCACTAATGTCAAGGAGCTGTACGGCAAGATCGCTGAGGCCTCCGACTACCAG
CTGCTGAGGTGATGTTCTGCACCCTCAACACCCACAAAGTGGACATGGACAACTCCTGGGGGGCCAGAT
CGGCCTGGAAGACTTCATCTTTGCCATGTGAAGGGGCAGCGCAAAGAGGTGGAAGTGTCAAGTCGGAG
GAGGCTCTGGGGCTCACCATCACCGACAACGGGGCCGGCTACGCCTTCATTAAGCGCATCAAGGAAGGCA
GTGTGATTGACCACATTCAGCTCATCAGCGTGGGGGACATGATTGAAGCCATCAACGGGCAGAGCCTGCT
GGGCTGTGCGCATTACGAGGTTGCCAGGCTCCTCAAGGAGCTGCCCGAGGCCGCACCTTCACCCTCAA
CTCACAGAACCTCGAAAGGCCTTTGATATGATCAGCCAGCGTTCCAGCCGTTGGCCACCCTGGTTCAGGCC
CACAACGGGACTGGCCGAGGGACCCTCCGTCTCCGATCCCGGGGCCCTGCCACCGTGGAGGATCTGCC
GTCGGCCTTTGAGGAGAAGGCCATTGAGAAGGTGGATGACTTGCTAGAGAGCTACATGGGGATCAGAGAC
ACGGAGCTGGCTGCCACCATGGTGGAGCTGGGAAAGGACAAAAGGAACCCGGACGAGCTGGCAGAAGCCC
TGGATGAGCGGCTCGGTGACTTCGCATTCAGATGAATTTGTCTTTGATGTCTGGGAGCTATCGGGGA
TGCCAAGTTGGCCGCTAC

ACGCGTACGCGGCCGCTCGAG - GFP Tag - GTTTAA



[View online »](#)

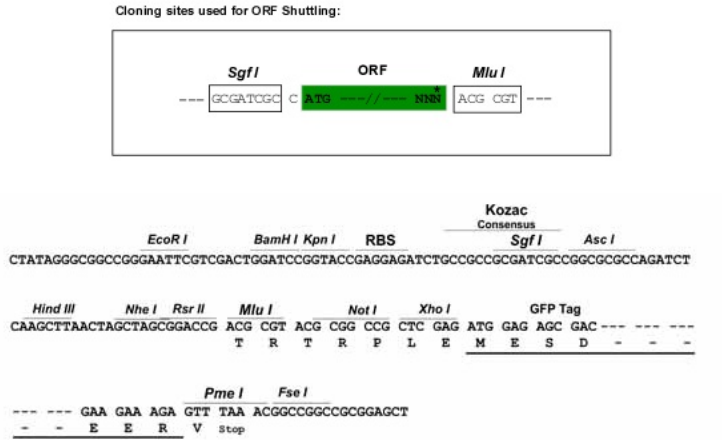
Protein Sequence: >MG204910 representing NM_018771
Red=Cloning site Green=Tags(s)

MPLGLGRRKKAPPLVENEEAPSRSGLVGVEPGPLGSSAAGESQMGLPPPPAALRPRLVFHTQLAHGSPT
 GRIEGFTNVKELYGKIAEAFRLPAAEVMFCTLNTHKVDMDKLLGGQIGLEDFIFAHVKGQRKEVEVFKSE
 EALGLTITDNGAGYAFIKRIKEGSVIDHIQLISVGMIEAINGQSLLGCRHYEVARLLKELPRGRTFTLK
 LTEPRKAFDMISQRSAGHPGSGPQLGTGRGTLRLRSRGPATVEDLPSAFEKAIEKVDDLLESYMGIRD
 TELAATMVELGDKRNPDELAELDERLGDFAFPDEFVFDVWGAIGDAKVGRY

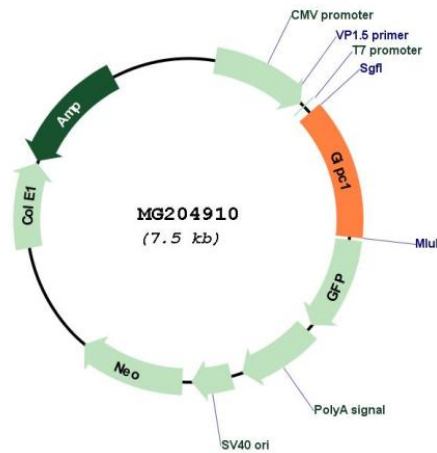
TRTRPLE - GFP Tag - V

Restriction Sites: SgfI-MluI

Cloning Scheme:



Plasmid Map:



ACCN: NM_018771

ORF Size: 999 bp

OTI Disclaimer:	The molecular sequence of this clone aligns with the gene accession number as a point of reference only. However, individual transcript sequences of the same gene can differ through naturally occurring variations (e.g. polymorphisms), each with its own valid existence. This clone is substantially in agreement with the reference, but a complete review of all prevailing variants is recommended prior to use. More info
OTI Annotation:	This clone was engineered to express the complete ORF with an expression tag. Expression varies depending on the nature of the gene.
Components:	The ORF clone is ion-exchange column purified and shipped in a 2D barcoded Matrix tube containing 10ug of transfection-ready, dried plasmid DNA (reconstitute with 100 ul of water).
Reconstitution Method:	<ol style="list-style-type: none">1. Centrifuge at 5,000xg for 5min.2. Carefully open the tube and add 100ul of sterile water to dissolve the DNA.3. Close the tube and incubate for 10 minutes at room temperature.4. Briefly vortex the tube and then do a quick spin (less than 5000xg) to concentrate the liquid at the bottom.5. Store the suspended plasmid at -20°C. The DNA is stable for at least one year from date of shipping when stored at -20°C.
RefSeq:	NM_018771.3 , NP_061241.1
RefSeq Size:	1632 bp
RefSeq ORF:	1002 bp
Locus ID:	67903
UniProt ID:	Q9Z0G0
Cytogenetics:	8 C2
Gene Summary:	Inhibits endothelial cell migration (in vitro). May be involved in G protein-linked signaling (By similarity).[UniProtKB/Swiss-Prot Function]