

## Product datasheet for **MG204906**

### Chn2 (NM\_023543) Mouse Tagged ORF Clone

#### Product data:

Product Type:	Expression Plasmids
Product Name:	Chn2 (NM_023543) Mouse Tagged ORF Clone
Tag:	TurboGFP
Symbol:	Chn2
Synonyms:	1700026N20Rik; 4930557O16Rik; ARHGAP3; Bch
Mammalian Cell Selection:	Neomycin
Vector:	pCMV6-AC-GFP (PS100010)
E. coli Selection:	Ampicillin (100 ug/mL)
ORF Nucleotide Sequence:	>MG204906 representing NM_023543 Red=Cloning site Blue=ORF Green=Tags(s)

TTTTGTAATACGACTCACTATAGGGCGGCCGGAATTCGTCGACTGGATCCGGTACCGAGGAGATCTGCC  
GCC**CGATCGCC**

ATGTGCTCTCAGGAAGTGTGGCTGGAAAATGAGAGAAAATGTGCTATGGTTCGGAAGTCCAAGCCCAGCA  
GGAAGCGCCAAGAGCTGCTGGCCATTGCATTTGGGGTCAAGGTGGGGCTCAAAGGTGGCTTTCTCTGGTC  
TCCTCTCAAGCTTTTGCCTGTTACAGATCTCTCACTGGTCCGAAGAGCTGCCCTCACACACAACGAC  
AACCACCTCAACTATGAGAAGACACAACTTCAAGGTGCACACATTCGGGGCCACACTGGTGTGAAT  
ACTGTGCCAATTTTATGTGGGGCTCATCGCCAGGGAGTCCGGTGTTCAGATTGTGGTTAAACGTACA  
CAAACAGTGTCCAAGCACGTCCTCAATGACTGCCAGCCAGATCTCAAGAGGATCAAGAAAGTGTACTGC  
TGTGACCTCACCACGCTTGTCAAAGCTCACAACACTCAGAGACCCATGGTGGTGGACATATGTATTCGGG  
AAATTGAAGCAAGAGGATTAAAGTCAGAAGGGCTTTACAGAGTCTCTGGATTACAGAACACATTGAAGA  
TGTCAAGATGGCGTTTGACAGAGATGGTAAAAGGCGGATATCTCTGCCAACATCTACCCAGACATAAAC  
ATCATCACTGGAGCCCTGAACTGTACTCCGAGACTTACCCATCCCTATCATCATATGACACCTACT  
CCAAATTTATAGAGGCAGCAAAAATCTCCAATGCGGATGAGAGGCTGGAAGCTGTCCATGAGGTCTGAT  
GCTGCTGCCTCTGCCACTATGAGACCCTGCGCTACCTGATGATCCACCTGAAAAAGGTTACCATGAAT  
GAAAAGGACAATTAATGAATGCCGAAAATCTGGGGATCGTGTGGGGCCACCCTGATGAGACCCCTG  
AGGACAGCACCCCTCACCACCCTCATGACATGCCGTACCAAAGCTGATCGTGCAGATTTAATAGAAAA  
CGAAGATGTTCTGTTT

**ACGCGT**ACGCGGCCGCTCGAG - GFP Tag - GTTTAA



[View online »](#)

**Protein Sequence:** >MG204906 representing NM\_023543  
 Red=Cloning site Green=Tags(s)

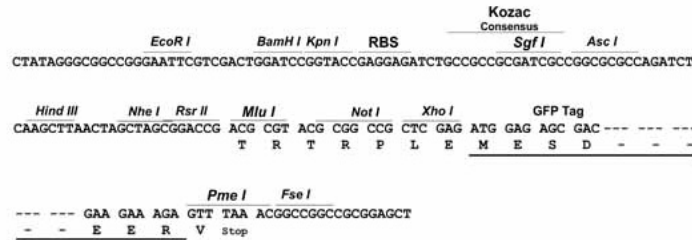
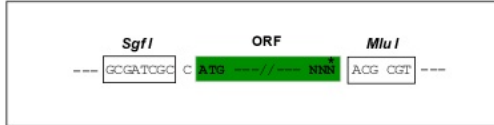
MCSQELWLENERKCAMVRKSKPSRKRQELLAIAFGVKVGLKGGFLWSPLKLFACSQISSLVRRALTHND  
 NHFNYEKTHNFKVHTFRGPHWCEYCANFMWGLIAQGVRCSDCLNVHKQCSKHVPNDQPDLKRIKKVYC  
 CDLTTLVKAHNTQRPVVDICIREIEARGLKSEGLYRVSGFTEHIEDVKMAFDRDGEKADISANIYPDIN  
 IITGALKLYFRDLPIPIIITYDYSKFIEAAKISNADERLEAVHEVLMMLPPAHYETLRYLMIHLKKVMTM  
 EKDNLMNAENLGIYVGP TLMRPPEDSTLTTLHDMRYQKLIVQILINEDVLF

TRTRPLE - GFP Tag - V

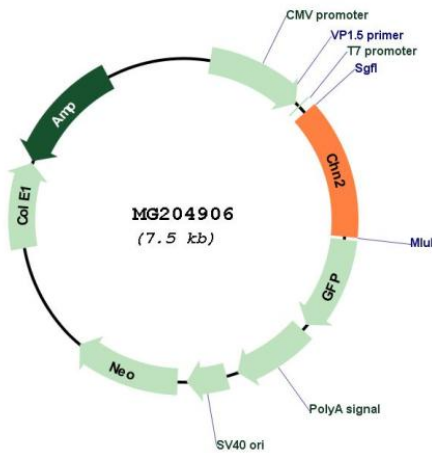
**Restriction Sites:** SgfI-MluI

**Cloning Scheme:**

Cloning sites used for ORF Shuttling:



**Plasmid Map:**



**ACCN:** NM\_023543

**ORF Size:** 996 bp

<b>OTI Disclaimer:</b>	The molecular sequence of this clone aligns with the gene accession number as a point of reference only. However, individual transcript sequences of the same gene can differ through naturally occurring variations (e.g. polymorphisms), each with its own valid existence. This clone is substantially in agreement with the reference, but a complete review of all prevailing variants is recommended prior to use. <a href="#">More info</a>
<b>OTI Annotation:</b>	This clone was engineered to express the complete ORF with an expression tag. Expression varies depending on the nature of the gene.
<b>Components:</b>	The ORF clone is ion-exchange column purified and shipped in a 2D barcoded Matrix tube containing 10ug of transfection-ready, dried plasmid DNA (reconstitute with 100 ul of water).
<b>Reconstitution Method:</b>	<ol style="list-style-type: none"><li>1. Centrifuge at 5,000xg for 5min.</li><li>2. Carefully open the tube and add 100ul of sterile water to dissolve the DNA.</li><li>3. Close the tube and incubate for 10 minutes at room temperature.</li><li>4. Briefly vortex the tube and then do a quick spin (less than 5000xg) to concentrate the liquid at the bottom.</li><li>5. Store the suspended plasmid at -20°C. The DNA is stable for at least one year from date of shipping when stored at -20°C.</li></ol>
<b>RefSeq:</b>	<a href="#">NM_023543.2</a> , <a href="#">NP_076032.2</a>
<b>RefSeq Size:</b>	2653 bp
<b>RefSeq ORF:</b>	999 bp
<b>Locus ID:</b>	69993
<b>UniProt ID:</b>	<a href="#">Q80XD1</a>
<b>Cytogenetics:</b>	6 B3
<b>Gene Summary:</b>	GTPase-activating protein for p21-rac.[UniProtKB/Swiss-Prot Function]