

Product datasheet for **MG204902**

Nudc (BC011253) Mouse Tagged ORF Clone

Product data:

Product Type:	Expression Plasmids
Product Name:	Nudc (BC011253) Mouse Tagged ORF Clone
Tag:	TurboGFP
Symbol:	Nudc
Synonyms:	SIG-92; Silg92
Mammalian Cell Selection:	Neomycin
Vector:	pCMV6-AC-GFP (PS100010)
E. coli Selection:	Ampicillin (100 ug/mL)
ORF Nucleotide Sequence:	>MG204902 representing BC011253 Red=Cloning site Blue=ORF Green=Tags(s)

TTTTGTAATACGACTCACTATAGGGCGGCCGGAATTCGTCGACTGGATCCGGTACCGAGGAGATCTGCC
GCC**CGATCGCC**

ATGGGAGGGGAGCAGGAGGAGGAGCGCTTCGACGGCATGCTGCTGGCCATGGCGCAGCAGCACGAGGGCG
GCGTGCAGGAGCTTGTGAACACCTTCTTCAGCTTCCTTCGACGCAAAACAGACTTTTTTCATTGGAGGAGA
AGAGGGGATGGCAGAGAAGCTGATCACACAGACTTTCAACCACCACAACCAGCTGGCACAGAAGGCCGG
AGAGAGAAGCGAGCTCGGCAGGAGACCGAGCGCAGGGAGAAGGCAGAGCGGGCAGCCAGGCTGGCCAAGG
AGGCCAAGGCAGAGACCCCGGGCCACAGATCAAGGAGTTGACTGATGAGGAGGCAGAGCGACTGCAACT
GGAGATTGACCAGAAAAAGGATGCAGAGGATCAGGAGGCCAGCTCAAGAACGGCAGCCTTGACTACCA
GGAAAGCAGGATGCGGAGGACGAGGAGGACGAGGAGGATGAGAAGGACAAAGGAAAGCTGAAGCCTAACC
TAGGCAATGGGGCTGACCTGCCCAACTACCGCTGGACCCAGACCTGGCAGAAGCTGGATCTGGCAGTGCC
CTTCCGGGTGACCTTCCGGCTGAAGGAAAGGATGTGGTGGTGGACATCCAGCGCGGCATCTCCGGGTG
GGCCTTAAGGACAGCCACCAAGTGGTGGTGGAGAACTCTACAATGAAGTCAAGTGGAGGAGAGCTCGT
GGCTCATCGAGGATGGCAAGGTGGTGGTGGTGGTGGTGGTGGTGGTGGTGGTGGTGGTGGTGGTGGTGGT
CTTGTTACCAGTGACCCCGAAATCAATACCAAGAAGATTAACCTGAGAAGCTCAAGCTATCAGACCTC
GACAGTGAGACTCGCAGCATGGTGGAAAAGATGATGATGACCAGAGGCAGAAGTCCATGGGCTTGCCCA
CCTCTGATGAGCAGAAGAAACAGGAAATCCTGAAGAAGTTCATGGACCAGCACCCAGAGATGGATTCTC
CAAGGCCAAATTCAAC

ACGCGTACGCGGCCGCTCGAG - GFP Tag - GTTTAA



[View online »](#)

Protein Sequence: >MG204902 representing BC011253
 Red=Cloning site Green=Tags(s)

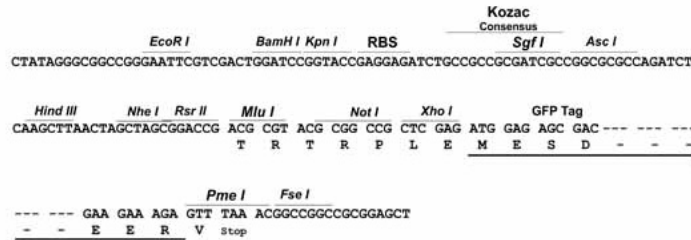
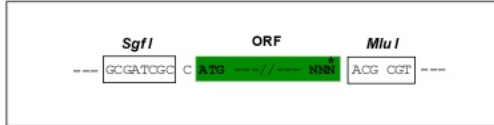
MGGEQEEERFDGMLLAMAQQHEGGVQELVNTFFSFLRRKTDFFIGGEEGMAEKLITQTFNHHNQLAQKAR
 REKRARQETERREKAERAARLAKEAKAETPGPQIKELTDEEAERLQLEIDQKKAEDQEAQLKNGSLDSP
 GKQDAEDEDEDEKDKGKLPNLGNGADLPNYRWTQTLAELDLAVPFRVSFRLKGGKDVVVDIQRRLRV
 GLKGPVVDGELYNEVKVEESSWLIEDGKVTVHLEKINKMEWWNRLVTSDFEINTKKINPENSKLSDL
 DSETRSMVEKMMYDQRQKSMGLPTSDEQKQEIILKKFMDQHPMDFSKAKFN

TRTRPLE - GFP Tag - V

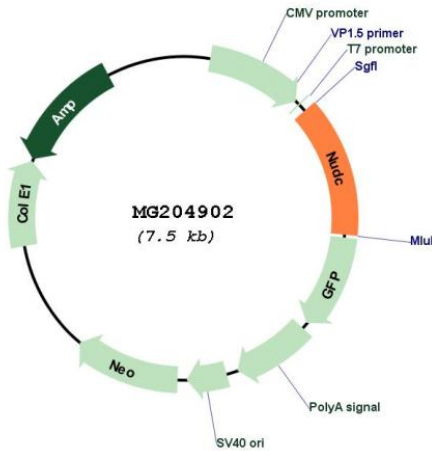
Restriction Sites: SgfI-MluI

Cloning Scheme:

Cloning sites used for ORF Shuttling:



Plasmid Map:



ACCN: BC011253

ORF Size: 998 bp

OTI Disclaimer:	The molecular sequence of this clone aligns with the gene accession number as a point of reference only. However, individual transcript sequences of the same gene can differ through naturally occurring variations (e.g. polymorphisms), each with its own valid existence. This clone is substantially in agreement with the reference, but a complete review of all prevailing variants is recommended prior to use. More info
OTI Annotation:	This clone was engineered to express the complete ORF with an expression tag. Expression varies depending on the nature of the gene.
Components:	The ORF clone is ion-exchange column purified and shipped in a 2D barcoded Matrix tube containing 10ug of transfection-ready, dried plasmid DNA (reconstitute with 100 ul of water).
Reconstitution Method:	<ol style="list-style-type: none">1. Centrifuge at 5,000xg for 5min.2. Carefully open the tube and add 100ul of sterile water to dissolve the DNA.3. Close the tube and incubate for 10 minutes at room temperature.4. Briefly vortex the tube and then do a quick spin (less than 5000xg) to concentrate the liquid at the bottom.5. Store the suspended plasmid at -20°C. The DNA is stable for at least one year from date of shipping when stored at -20°C.
RefSeq:	BC011253 , AAH11253
RefSeq Size:	1291 bp
RefSeq ORF:	998 bp
Locus ID:	18221
Cytogenetics:	4 D2.3
Gene Summary:	Plays a role in neurogenesis and neuronal migration. Necessary for correct formation of mitotic spindles and chromosome separation during mitosis (By similarity).[UniProtKB/Swiss-Prot Function]