

Product datasheet for **MG204900**

Paqr3 (BC096380) Mouse Tagged ORF Clone

Product data:

| | |
|---------------------------|--|
| Product Type: | Expression Plasmids |
| Product Name: | Paqr3 (BC096380) Mouse Tagged ORF Clone |
| Tag: | TurboGFP |
| Symbol: | Paqr3 |
| Mammalian Cell Selection: | Neomycin |
| Vector: | pCMV6-AC-GFP (PS100010) |
| E. coli Selection: | Ampicillin (100 ug/mL) |
| ORF Nucleotide Sequence: | >MG204900 representing BC096380 Red=Cloning site Blue=ORF Green=Tags(s) |

TTTTGTAATACGACTCACTATAGGGCGGCCGGAATTCGTCGACTGGATCCGGTACCGAGGAGATCTGCC
GCC**CGATCGCC**

ATGCATCAGAAGCTGCTGAAGAGTGCCTACTACATCGAGCTGGCAGCTACCAATACTGGCCGGTCTCTGG
TACCCCGCGGCATCCGCCTCTACACCTATGAACAGATCCCGGTATCCCTCAAAGACAACCCCTACATCAC
CGACGGCTACCGGGCCTACCTTCCTCCAGACTGTGTATCAAAAGTTTGTTCCTGTCTAATGAGACG
GTAAACATCTGGAGTCATTTGCTGGGTTCTTTCTCTTCCACCTGGGGATATATGACATGACATCCG
TGCTGCCTCCGCCAGCGCATCCAGAGAAGACTTTGTGATTTGCTCCATTTGCTTTTCTGCTCCAGGT
CTGCATGCTTTGCTCGGTGGGCTATCATCTTTTTCTGTCTCGTCCAGAAAAAATTGTCGGAGATGG
ATGGCATTGGATTATGCAGGAATTTCTATTGGAATACTGGGCTGCTATGTCTCAGGAGTATTTTATGCAT
TTTATTGCAATAATTACTGGCGTCAAGTGTACCTGATCACCGTGTGGCATGATCCTGGCAGTCTTCTT
CGCACAGATCCACCCAGCTACCTCACACAGCAGTGGCAGAGGCTCCGCCCATCATCTTCTGCTGTGT
TCGGGATATGGAGTGATCCCTACTCTTCACTGGGTTGGCTCAACGGAGGAGTCAGTGCTCCTATTGTAC
AGGACTTCGCACCCCGAGTAATTGTGATGTACGTATTGCTCTTCTTCTTCTGTTCTACATTTCCAA
GGTCCCGAACGGTACTTTCCAGGACAACCTGAACTACCTCGGATCAAGCCACCAGATCTGGCATGCTCTT
GCAGTAGTGATGTATTGGTGGCATCAGTCCACGGTGTATGTCATGCAGTACAGACACAGCAAGCCTT
GCCCTGACTATGTTCCACCTGTCTACTCCACAGCTCCACTCTACCCCTGGGCTGGGCTAACAGT
CTCTGGCTTCTTGGTG

ACGCGTACGCGGCCGCTCGAG - GFP Tag - GTTTAA



[View online »](#)

Protein Sequence: >MG204900 representing BC096380
 Red=Cloning site Green=Tags(s)

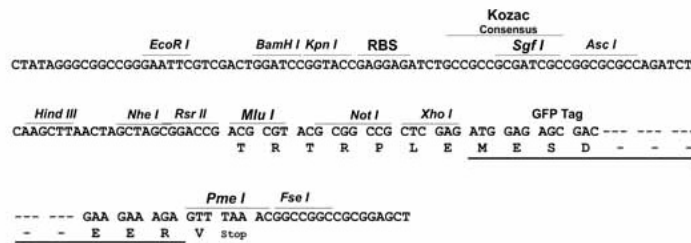
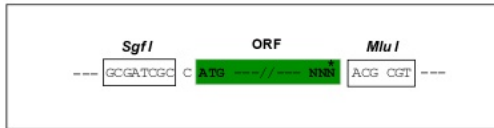
MHQKLLKSAHYIELGSYQYWVPLVPRGIRLYTYEQIPVSLKDNPYITDGYRAYLPSRLCIKSLFILSNET
 VNIWSHLLGFFLFFTLGIYDMTSLVPSASASREDFVICISICLFCFQVCMCLCSVGYHLFSCHRSEKTCRRW
 MALDYAGISIGILGCVSGVFYAFYCNNYWRQVYLITVLAMILAVFFAQIHPSYLTQQWQLRPIIFCSV
 SGYGVIPITLHWVWLNNGVSAPIVQDFAPRVIVMYVIALLAFLFYISKVPERYFPGQLNYLGSSHQIWHVL
 AVVMLYWWHQSTVYVMQYRHSKPCPDYVSHLSLLPQLHSTPGLGLTVSGFLV

TRTRPLE - GFP Tag - V

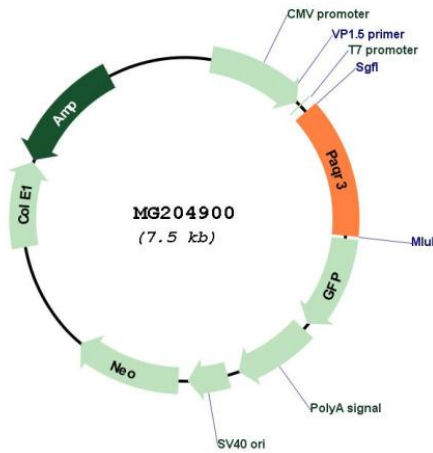
Restriction Sites: SgfI-MluI

Cloning Scheme:

Cloning sites used for ORF Shutting:



Plasmid Map:



ACCN: BC096380

ORF Size: 998 bp

| | |
|-------------------------------|---|
| OTI Disclaimer: | The molecular sequence of this clone aligns with the gene accession number as a point of reference only. However, individual transcript sequences of the same gene can differ through naturally occurring variations (e.g. polymorphisms), each with its own valid existence. This clone is substantially in agreement with the reference, but a complete review of all prevailing variants is recommended prior to use. More info |
| OTI Annotation: | This clone was engineered to express the complete ORF with an expression tag. Expression varies depending on the nature of the gene. |
| Components: | The ORF clone is ion-exchange column purified and shipped in a 2D barcoded Matrix tube containing 10ug of transfection-ready, dried plasmid DNA (reconstitute with 100 ul of water). |
| Reconstitution Method: | <ol style="list-style-type: none">1. Centrifuge at 5,000xg for 5min.2. Carefully open the tube and add 100ul of sterile water to dissolve the DNA.3. Close the tube and incubate for 10 minutes at room temperature.4. Briefly vortex the tube and then do a quick spin (less than 5000xg) to concentrate the liquid at the bottom.5. Store the suspended plasmid at -20°C. The DNA is stable for at least one year from date of shipping when stored at -20°C. |
| RefSeq: | BC096380 |
| RefSeq Size: | 2112 bp |
| RefSeq ORF: | 998 bp |
| Locus ID: | 231474 |
| Cytogenetics: | 5 E3 |
| Gene Summary: | Functions as a spatial regulator of RAF1 kinase by sequestering it to the Golgi. [UniProtKB/Swiss-Prot Function] |