

## Product datasheet for **MG204877**

### **B3galnt1 (NM\_020026) Mouse Tagged ORF Clone**

#### Product data:

Product Type:	Expression Plasmids
Product Name:	B3galnt1 (NM_020026) Mouse Tagged ORF Clone
Tag:	TurboGFP
Symbol:	B3galnt1
Synonyms:	B3galt3; b3GT3
Mammalian Cell Selection:	Neomycin
Vector:	pCMV6-AC-GFP (PS100010)
E. coli Selection:	Ampicillin (100 ug/mL)
ORF Nucleotide Sequence:	>MG204877 representing NM_020026 Red=Cloning site Blue=ORF Green=Tags(s)

TTTTGTAATACGACTCACTATAGGGCGGCCGGAATTCGTCGACTGGATCCGGTACCGAGGAGATCTGCC  
GCC**CGATCGCC**

ATGGCCCCGGCTGTCTTGACTGCCCTTCCAATAGGATGTCACTGAGATCCCTCAAGTGGAGCCTGCTGC  
TGCTGTCCCTGTGAGCTTCTGGTGATATGGTACCTCAGCCTCCCCACTACAATGTGATCGAGCGCGT  
CAACTGGATGACTTCTATGAGTATGAGCCAATTTACAGACAAGACTTTCGTTCCAGCTCCGCGAACAC  
TCGAAGTGTCTCATCAGAACCATTCTGGTGCATCCTGGTGACCTCACGCCCTCAGATGTGAAAGCCA  
GACAAGCCATTAGAGTACTTGGGTGAGAAAAAGTCCTGGTGGGATATGAGGTGCTCAGTTTTTCTT  
ACTAGGCCAGCAGGCTGAAAGGGAAGACAAAACGTTAGCCCTGTCTTGGAGGATGAGCAGTTCTCTAT  
GGTGATATTATACGCAAGACTTTCTAGACACATATAATAACTTGACCTTGAAAACCATTTGGCTTTCA  
GGTGGGTAATGGAGTTTTGCCCAATGCCAAGTATATTATGAAAACAGACACTGATGTTTTCATCAACAC  
TGGCAATTTAGTCAAGTATCTTTAAACCTAAACCACTCAGAGAAGTTTTTACGGGCTATCCTCTAATT  
GATAACTATTCTATAGAGGATTTTCCATAAAAACCATTTTACCAAGAGTACCCCTTCAAGGTGT  
TCCCTCCCTACTGCAGCGGGCTGGGCTACATTATGTCCGGCGACCTGGTGCCAGGGTCTACGAGATGAT  
GAGTCAGTGAAGCCCATCAAGTTTGAAGACGTTTATGTTGCCATCTGTTTGAATTTGTTAAAAGTGGAC  
ATTCATATCCAGAAGACACAAAACCTTTTCTTTCTGTACAGAATCCAATGGATGATGTCAGCTCAGAC  
CGGTGATTGCAGCCCATGGCTTTTCTTCCAAGGAGATCATCATTCTGGCAGGTGATGCTGAGGAACAC  
CACATGCCATTAC

AG**CGGACCG**ACGCGTACGCGGCCGCTCGAG - GFP Tag - GTTTAA



[View online »](#)

Protein Sequence: >MG204877 representing NM\_020026  
 Red=Cloning site Green=Tags(s)

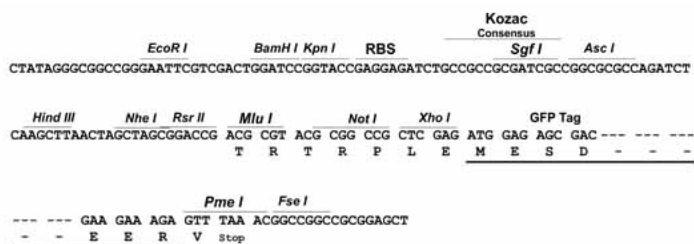
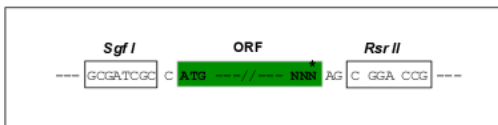
MAPAVLTALPNRMSLRSLKWSLLLLLSLLSFLVIWYLSLPHYNVIERVNWMMFYEYEPYRQDFRFTLREH  
 SNCSHQNPFLVILVTSRPSDVKARQAIRVTWGEKKSWWGYEVLTFLLGQQAEREDKTLALSLEDEHVLY  
 GDIIHQDFLDTYNNLTLKTIMAFRWMEFCPNAKYIMKTDTDVFINTGNLVKYLNLNHSEKFFTYPLI  
 DNYSYRGGFFHKNHISYQEYPFKVFPPYCSGLGYIMSGDLVPRVYEMMSHVKPIKFEDVYVGICLNLLKVD  
 IHIPEDTNLFFLYRIHLDVCQLRRVIAAHGFSSKEIITFWQVMLRNTTCHY

SGPTRRRLE - GFP Tag - V

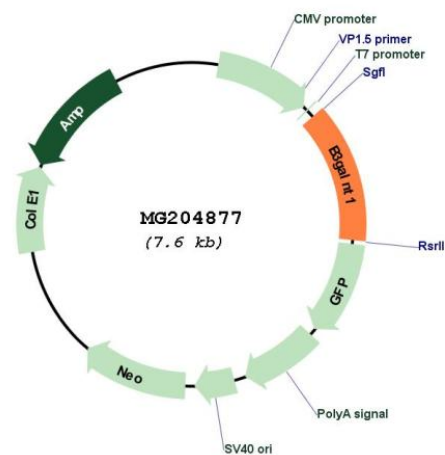
Restriction Sites: SgfI-RsrII

Cloning Scheme:

Cloning sites used for ORF Shuttling:



Plasmid Map:



ACCN: NM\_020026

ORF Size: 993 bp

<b>OTI Disclaimer:</b>	The molecular sequence of this clone aligns with the gene accession number as a point of reference only. However, individual transcript sequences of the same gene can differ through naturally occurring variations (e.g. polymorphisms), each with its own valid existence. This clone is substantially in agreement with the reference, but a complete review of all prevailing variants is recommended prior to use. <a href="#">More info</a>
<b>OTI Annotation:</b>	This clone was engineered to express the complete ORF with an expression tag. Expression varies depending on the nature of the gene.
<b>Components:</b>	The ORF clone is ion-exchange column purified and shipped in a 2D barcoded Matrix tube containing 10ug of transfection-ready, dried plasmid DNA (reconstitute with 100 ul of water).
<b>Reconstitution Method:</b>	<ol style="list-style-type: none"><li>1. Centrifuge at 5,000xg for 5min.</li><li>2. Carefully open the tube and add 100ul of sterile water to dissolve the DNA.</li><li>3. Close the tube and incubate for 10 minutes at room temperature.</li><li>4. Briefly vortex the tube and then do a quick spin (less than 5000xg) to concentrate the liquid at the bottom.</li><li>5. Store the suspended plasmid at -20°C. The DNA is stable for at least one year from date of shipping when stored at -20°C.</li></ol>
<b>RefSeq:</b>	<a href="#">NM_020026.1</a>
<b>RefSeq Size:</b>	1903 bp
<b>RefSeq ORF:</b>	996 bp
<b>Locus ID:</b>	26879
<b>UniProt ID:</b>	<a href="#">Q920V1</a>
<b>Cytogenetics:</b>	3 E1
<b>Gene Summary:</b>	Transfers N-acetylgalactosamine onto globotriaosylceramide (PubMed:9417047). Plays a critical role in preimplantation stage embryonic development (PubMed:11463849). [UniProtKB/Swiss-Prot Function]