

Product datasheet for **MG204874**

Ssbp2 (NM_024186) Mouse Tagged ORF Clone

Product data:

Product Type:	Expression Plasmids
Product Name:	Ssbp2 (NM_024186) Mouse Tagged ORF Clone
Tag:	TurboGFP
Symbol:	Ssbp2
Synonyms:	1500004K09Rik; 2310079I02Rik; 9330163K02Rik; A830008M03Rik; AU067692; AW558684; Hspc116
Mammalian Cell Selection:	Neomycin
Vector:	pCMV6-AC-GFP (PS100010)
E. coli Selection:	Ampicillin (100 ug/mL)
ORF Nucleotide Sequence:	>MG204874 representing NM_024186 Red=Cloning site Blue=ORF Green=Tags(s)

TTTTGTAATACGACTCACTATAGGGCGGCCGGAATTCGTCGACTGGATCCGGTACCGAGGAGATCTGCC
GCCGCGATCGCC

ATGTACGGCAAAGGCAAGAGTAACAGCAGCGCCGTCCCGTCCGACAGCCAGGCCCGGAGAAGTTAGCAC
TCTACGTGTATGAATATCTGCTCCATGTAGGAGCTCAGAAATCGGCTCAGACATTTTTATCAGAGATAAG
ATGGGAAAAAACATCACATTGGGGGAGCCGCCGGATTCTTACATTCTTGGTGGTGTGTATTTGGGAT
CTCTACTGTGCAGCTCCAGAGAGACGGGAAACCTGTGAACACTCGAGCGAAGCTAAAGCCTTCCATGATT
ATCCTTTTATGTCGCCTCGGTACCCTGGCGGCCGAGGCCCATTTGAGGATACCTAACCAGGCACTTGG
AGGTGTCCAGGAAGTCAGCCATTACTCCCCAGTGAATGGATCCAACACGACAACAAGGACATCCAAAT
ATGGGTGGACCAATGCAGAGAATGACTCCCCAAGAGGAATGGTGCCTTAGGACCACAGAACTATGGAG
GTGCAATGAGACCCCACTGAATGCTTTAGGTGGCCCTGGAATGCCTGGAATGAACATGGGTCCAGGTGG
TGGTAGACCTTGCCAAACCAACAAATGCGAATTCATACCCTACTCCTCAGCGTCTCCTGGGAATTAC
GTAGGTCTCCGGGAGGTGGAGGACCACAGGAACACCCATCATGCCTAGTCCAGCAGATTCAACTAATT
CTGGAGACAACATGTATACTTTAATGAATGCAGTACCTCCTGGGCCTAACAGACCTAATTTTCCAATGGG
CCCTGGATCAGATGGTCTATGGGTGGATTAGGAGGAATGGAGTCCCATCACATGAACGGCTCTTTAGGC
TCAGGAGATGGACAGTATTTCCAAGAATTCCTCCAATAATATGAGCCTGAGTAACCAGCCGGGCACTC
CAAGGGATGACGGTGAATGGGGGAAATTTCTTAAATCCTTTTCAGAGTGAGAGTTACTCCCCAGCAT
GACCATGAGCGTG

ACGCGTACGCGGCCGCTCGAG - GFP Tag - GTTTAA



[View online »](#)

Protein Sequence: >MG204874 representing NM_024186
Red=Cloning site Green=Tags(s)

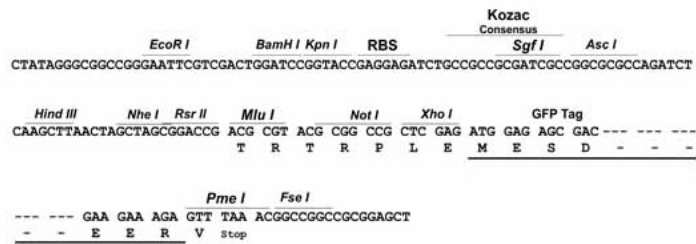
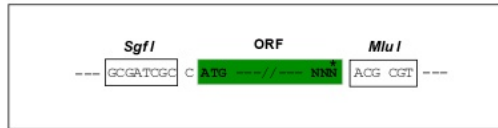
MYGKGKSNSSAVPSDSQAREKLALYVVEYLLHVGAQKSAQTFLSEIRWEKNITLGEPPGFLHSSWCVFWD
 LYCAAPERRETCEHSSEAKAFHDYPFMSPRYPGGPRPPLRIPNQALGGVPGSQPLLP SGMDPTRQQGHPN
 MGGPMQRMTPPRGMVPLGPQNYGGAMRPPLNALGGPGMGMNMGPGGGRPWPNPTNANSIPYSSASPGNY
 VGPPGGGGPPGTPIMPSPADSTNSGDNMYTLMNAVPPGPNRPNPFPMGPGSDGPMGGLGGMESHMMNGSLG
 SGMDSISKNSPNMMLSNQPGTPRDDGEMGGNFLNPFQSESYSPSMTMSV

TRTRPLE - GFP Tag - V

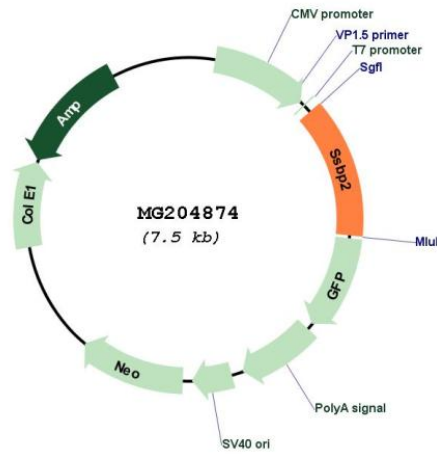
Restriction Sites: SgfI-MluI

Cloning Scheme:

Cloning sites used for ORF Shutting:



Plasmid Map:



ACCN: NM_024186

ORF Size:	993 bp
OTI Disclaimer:	The molecular sequence of this clone aligns with the gene accession number as a point of reference only. However, individual transcript sequences of the same gene can differ through naturally occurring variations (e.g. polymorphisms), each with its own valid existence. This clone is substantially in agreement with the reference, but a complete review of all prevailing variants is recommended prior to use. More info
OTI Annotation:	This clone was engineered to express the complete ORF with an expression tag. Expression varies depending on the nature of the gene.
Components:	The ORF clone is ion-exchange column purified and shipped in a 2D barcoded Matrix tube containing 10ug of transfection-ready, dried plasmid DNA (reconstitute with 100 ul of water).
Reconstitution Method:	<ol style="list-style-type: none">1. Centrifuge at 5,000xg for 5min.2. Carefully open the tube and add 100ul of sterile water to dissolve the DNA.3. Close the tube and incubate for 10 minutes at room temperature.4. Briefly vortex the tube and then do a quick spin (less than 5000xg) to concentrate the liquid at the bottom.5. Store the suspended plasmid at -20°C. The DNA is stable for at least one year from date of shipping when stored at -20°C.
RefSeq:	NM_024186.5
RefSeq Size:	1653 bp
RefSeq ORF:	996 bp
Locus ID:	66970
UniProt ID:	Q9CYZ8
Cytogenetics:	13 C3