

## Product datasheet for **MG204847**

### Phf23 (BC033533) Mouse Tagged ORF Clone

#### Product data:

Product Type:	Expression Plasmids
Product Name:	Phf23 (BC033533) Mouse Tagged ORF Clone
Tag:	TurboGFP
Symbol:	Phf23
Synonyms:	JUNE-1, RP23-172M21.13
Mammalian Cell Selection:	Neomycin
Vector:	pCMV6-AC-GFP (PS100010)
E. coli Selection:	Ampicillin (100 ug/mL)
ORF Nucleotide Sequence:	>MG204847 representing BC033533 Red=Cloning site Blue=ORF Green=Tags(s)

TTTTGTAATACGACTCACTATAGGGCGGCCGGAATTCGTCGACTGGATCCGGTACCGAGGAGATCTGCC  
GCC**CGATCGCC**

ATGGCGGAGCCAGTCCCGAAGATCCGCTCCGACTCTTAAACCAGAGACTCAGCCACCGGAGAAAAGGC  
GGAGAACCATTGAGGATTTTAACAAATTCTGCAGTTTTGTCTTGGCCTATGCTGGTTACATCCCCCTAG  
CAAAGAGGCTCCTGACAGTGCTACTCTGCTTGAGAAGATGAAGCTCAAGGACTCTTTTTGATCTGGAT  
GGGCCAAAGTGGCATCTCCACTCTCTCCACATCATTGACGCATACCTCCGGCCCCCGCTGCTCTCG  
CCCCAGTCCCGTGTCCAGGGGACCTCTCCAGCCTCGAAAGAAGACCGAAAGAATAGAAAGTTGGG  
ACCAGGAGGTGGGGCTGGCTTTGGGGTGTCTCGGAGACCTCGACCAGCTCCTGGGGATGGGGAAAAGCGG  
TCTCGAATCAAGAAGAGCAAGAAGCGGAAGTTGAAAAAGGCAGATCGGGGAGATAGACTCCCACCTCCTG  
GCCCTCCTAGGGCTCCTCCAGTGATACAGACTCTGAAGAGGAGGAGGAAGGAAGAAGAGGAAGATGA  
TGAGGAAGAGATGACAGTGGGGGTGGAGTCCCAGCCCCGTGTGCTCCCAACCCCCCTGAGGCCCCAGG  
CCCCCTGTTACAGTGCCTCTGAAGGTGCTCCCCCTACTGACAGTGAAGGCAAAGATGTGGGCAGCACAG  
AAACAAGCAAGATGGAGATGCTAGCTCCAGTGAAGGCGAGATGCGGGTCATGGATGAGGACATCATGTT  
AGAATCAGGTGACGACTCCTGGGATCTGATCACGTGTTACTGCAGAAAGCCCTTTGCGGGCGGCCCATG  
ATTGAGTGCAGCCTCTGTGGGACGTGGATCCACCTCCTGTGCTAAGATTAAGAAGACCAACGTTCCCC  
ACTTCTTTTATTGCCAGAAATGCAAGGAAGTTCGGCCAGAGGCCCGCGGTTAGGGGGTCTCCCCAAATC  
TGGAGAACCC

**ACGCGT**ACGCGGCCGCTCGAG - GFP Tag - GTTTAA



[View online »](#)

**Protein Sequence:** >MG204847 representing BC033533  
 Red=Cloning site Green=Tags(s)

MAEPPSPEDPPPTLKPETQPPEKRRRTIEDFNKFCFVLYAGYIPPSKEAPDSATLLEKMKLKDSLFDLD  
 GPKVASPLSPTSLTHTSRPPAALAPVPLSQGDLSPRKKDRKNRKLGGGGAGFVLRPRPAPGDGEKR  
 SRIKSKKRKLLKADRGRDLPPPGPPRAPPDSDTDEEEEEEEEEEDDEEEMTVGGGVPAPVLPPTPEAPR  
 PPVTVHSEGAPPTDSEGKDVGSTETSQDGDASSSEGEMRVMDDEDIMVESGDDSWDLITCYCRKPFAGRPM  
 IECSLCGTWIHLSCAIKIKTNVPDFFYCQKCKELRPEARRLGGLPKSGEP

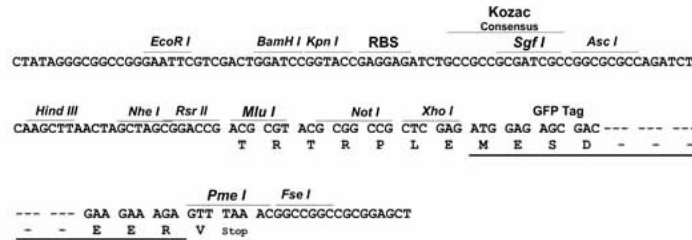
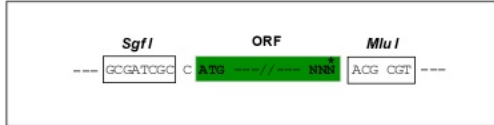
TRTRPLE - GFP Tag - V

**Restriction Sites:**

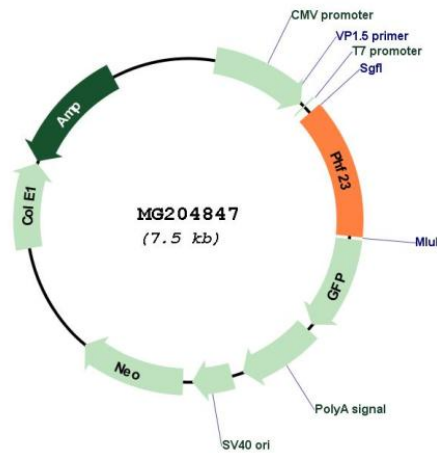
SgfI-MluI

**Cloning Scheme:**

Cloning sites used for ORF Shuttling:



**Plasmid Map:**



**ACCN:** BC033533

**ORF Size:** 992 bp

<b>OTI Disclaimer:</b>	The molecular sequence of this clone aligns with the gene accession number as a point of reference only. However, individual transcript sequences of the same gene can differ through naturally occurring variations (e.g. polymorphisms), each with its own valid existence. This clone is substantially in agreement with the reference, but a complete review of all prevailing variants is recommended prior to use. <a href="#">More info</a>
<b>OTI Annotation:</b>	This clone was engineered to express the complete ORF with an expression tag. Expression varies depending on the nature of the gene.
<b>Components:</b>	The ORF clone is ion-exchange column purified and shipped in a 2D barcoded Matrix tube containing 10ug of transfection-ready, dried plasmid DNA (reconstitute with 100 ul of water).
<b>Reconstitution Method:</b>	<ol style="list-style-type: none"><li>1. Centrifuge at 5,000xg for 5min.</li><li>2. Carefully open the tube and add 100ul of sterile water to dissolve the DNA.</li><li>3. Close the tube and incubate for 10 minutes at room temperature.</li><li>4. Briefly vortex the tube and then do a quick spin (less than 5000xg) to concentrate the liquid at the bottom.</li><li>5. Store the suspended plasmid at -20°C. The DNA is stable for at least one year from date of shipping when stored at -20°C.</li></ol>
<b>RefSeq:</b>	<a href="#">BC033533</a> , <a href="#">AAH33533</a>
<b>RefSeq Size:</b>	1728 bp
<b>RefSeq ORF:</b>	992 bp
<b>Locus ID:</b>	78246
<b>Cytogenetics:</b>	11
<b>Gene Summary:</b>	Acts as a negative regulator of autophagy, through promoting ubiquitination and degradation of LRSAM1, an E3 ubiquitin ligase that promotes autophagy in response to starvation or infecting bacteria.[UniProtKB/Swiss-Prot Function]