

Product datasheet for **MG204823**

Sdsl (NM_133902) Mouse Tagged ORF Clone

Product data:

Product Type:	Expression Plasmids
Product Name:	Sdsl (NM_133902) Mouse Tagged ORF Clone
Tag:	TurboGFP
Symbol:	Sdsl
Synonyms:	4432411H13Rik; AI504310; SDH1; SDS-RS1; TDH
Mammalian Cell Selection:	Neomycin
Vector:	pCMV6-AC-GFP (PS100010)
E. coli Selection:	Ampicillin (100 ug/mL)
ORF Nucleotide Sequence:	>MG204823 representing NM_133902 Red=Cloning site Blue=ORF Green=Tags(s)

TTTTGTAATACGACTCACTATAGGGCGGCCGGAATTCGTCGACTGGATCCGGTACCGAGGAGATCTGCC
GCC**CGATCGCC**

ATGGAGGGGGCCTTGGCAGAACGCGTCGGGGCGGAGCCTTTCCACAGGGTCACGCCCTGCTGGAGAGCT
GGGCGTGTCTCAGGTGGCAGGCATGCCGGTCTTCCTCAAATATGAGAATGTGCAGATAGCTGGCTCCTT
TAAGATTCGGGGCATCGGACATTTCTGCCAGCAGATGGCCAAGAGGGGATGCAGACATCTGGTGTGCTCC
TCAGGGGGCAATGCGGGCATTGCGGCTGCATACTCGGCTCGTAAGCTGGGCATCCCCGTACCATCGTGC
TCCCAGAGGGCACCTCCGTGCAGGTGGTGAGGGCGCTCGAGGGGAAGGGGCCGAGGTCCAGCTGACTGG
GAAAGTCTGGGATGAAGCCAATGTAAAAGCACAAAGAACTGGCCACAAGGGATGGCTGGGTGAACGTCTCC
CCGTTTGACCATCCCCCTATATGGGAAGGCCATGCCAGCCTAGTGCGGGAGCTGAAGGAGTCACTAGGGA
CCCCTCCAGGTGCTGTGGTGTGGCCGTGGGGGGCGGAGGGCTCCTGGCAGGTGTGACTGCTGGCCTGCT
GGAGGTGGGCTGGCAGCATGTGCCATCGTTGCCATGGAGACCCGCGGGGCGCACAGTTTCAATTCGGCC
TTGCAGGCAGGCAGGCCGGTACCCTGCCAGACATCACCAGTGTAGCCAAGAGCCTCGGAGCCAAGACGG
TGGCTGCACGGACCTTGGAGTGTGCAAAGGAGTGTGAGGTCTCTCTGAGGTGTTAGAAGACCGGGAGGC
TGTCAGCGCTGTGCAGAGGTTCTGGACGATGAGCGCATGCTGGTGAACCTGCCTGCGGTGCCGCCCTG
GCCCCATCTACTCGGGCATCCTGTGGAGGCTCCAGGCTGAGGGCCGCTGAGTTCTGCCCTAGCTTCCG
TTGTGGTTCATCGTGTCCGGTGGCAACAACATTAGTAGCCAACAGCTTCAGGAGCTGAAAAATCCAGCTGG
CTGCAGC

AG**CGGACCG**ACGCGTACGCGGCCGCTCGAG - GFP Tag - GTTTAA



[View online »](#)

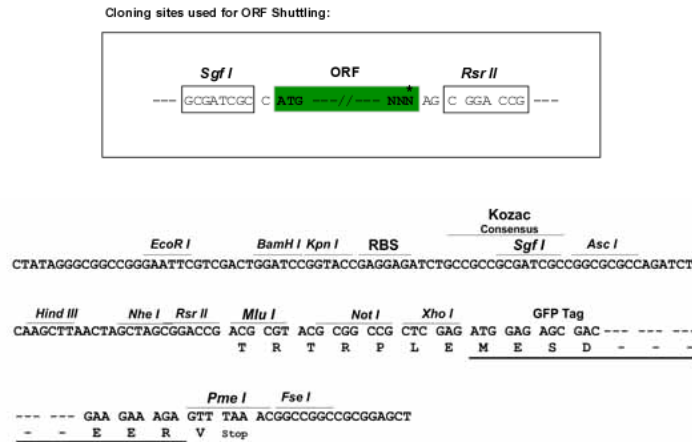
Protein Sequence: >MG204823 representing NM_133902
 Red=Cloning site Green=Tags(s)

MEGALAERVGAEPFHRVTPLLLESWALSQVAGMPVFLKYENVQIAGSFKIRGIGHFCQQMAKRGRHLVCS
 SGGNAGIAAAYSARKLGIPVTIVLPEGTSVQVRRLEGEAEVQLTGKVVDEANVKAQELATRDGWNVNS
 PFDHPLIWEGHASLVRELKESLGTTPGAVVLAVGGGLLAGVTAGLLEVGWQHVPVIVAMETRGAHSFNSA
 LQAGRPVTLPDITSVAKSLGAKTVAARTLECAKECEVLSEVVEDREAVSAVQRFLDDERMLVPEACGAAL
 AAIYSGILWRLQAEGRLLSSALASVVVIVCGGNIISSQQLQELKIQLGCS

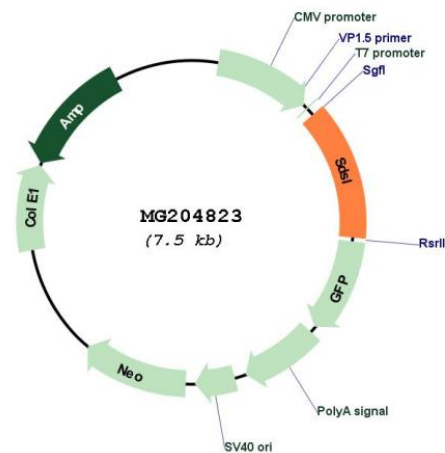
SGPTRTRRLE - GFP Tag - V

Restriction Sites: SgfI-RsrII

Cloning Scheme:



Plasmid Map:



ACCN: NM_133902

ORF Size: 987 bp

OTI Disclaimer:	The molecular sequence of this clone aligns with the gene accession number as a point of reference only. However, individual transcript sequences of the same gene can differ through naturally occurring variations (e.g. polymorphisms), each with its own valid existence. This clone is substantially in agreement with the reference, but a complete review of all prevailing variants is recommended prior to use. More info
OTI Annotation:	This clone was engineered to express the complete ORF with an expression tag. Expression varies depending on the nature of the gene.
Components:	The ORF clone is ion-exchange column purified and shipped in a 2D barcoded Matrix tube containing 10ug of transfection-ready, dried plasmid DNA (reconstitute with 100 ul of water).
Reconstitution Method:	<ol style="list-style-type: none">1. Centrifuge at 5,000xg for 5min.2. Carefully open the tube and add 100ul of sterile water to dissolve the DNA.3. Close the tube and incubate for 10 minutes at room temperature.4. Briefly vortex the tube and then do a quick spin (less than 5000xg) to concentrate the liquid at the bottom.5. Store the suspended plasmid at -20°C. The DNA is stable for at least one year from date of shipping when stored at -20°C.
RefSeq:	NM_133902.3
RefSeq Size:	1223 bp
RefSeq ORF:	990 bp
Locus ID:	257635
UniProt ID:	Q8R238
Cytogenetics:	5 F
Gene Summary:	Has low serine dehydratase and threonine dehydratase activity.[UniProtKB/Swiss-Prot Function]