

Product datasheet for **MG204805**

Dmrt2 (BC027669) Mouse Tagged ORF Clone

Product data:

Product Type:	Expression Plasmids
Product Name:	Dmrt2 (BC027669) Mouse Tagged ORF Clone
Tag:	TurboGFP
Symbol:	Dmrt2
Synonyms:	Terra
Mammalian Cell Selection:	Neomycin
Vector:	pCMV6-AC-GFP (PS100010)
E. coli Selection:	Ampicillin (100 ug/mL)
ORF Nucleotide Sequence:	>MG204805 representing BC027669 Red=Cloning site Blue=ORF Green=Tags(s)

TTTTGTAATACGACTCACTATAGGGCGGCCGGAATTCGTCGACTGGATCCGGTACCGAGGAGATCTGCC
GCC**CGATCGCC**

ATGAGGAAGAGAAGACCTTTGCTGACAAGGAGTTGGAGAACATTATGCTGGAGAGAGAATATAAAGAGA
GGGAGATGTTAGAAACATCTCAAGCTGCTGCCTTATTCTGCCCAACCGTATGGTGCCTGGACCCGAGTA
CAGTTCCTACAAAGGTACCTACAGCCCCACTGCAGGAGAGCTGCCGAGCAAGGACTTCTGTAACCTTTTA
CCTACCTGCCTTGATCTCACCATGCAGTATTCAGGGTCTGGGAATATGGAACCTATTCTCTAACGTC
GTGTGGCCACAACCTACAGACAATATCCCCTGTCTCACGATTTTAGTTTGGCCCAAGTGGGTCAT
TAGTGACACCTTCTCTACCAGCAATATCTGTTAAATGCTACCCTTCTGTCCAAGCTCTGAAGCCGGG
ACCGGCTGGGACTTGAAAGGAACCCGAGTTCAGGATGGGCTTAGCGCAGAGCAAGACATGATGCCACCCA
AACTGGAAGGCTCTCTGGTGCTGCCCATCTGCCAGAGTCCCAGCCTCGAGAACAGACCTTCAGGTTCA
CCAGGTGGTTCAGAGAGGTCTGCCTTCTCCCCACCGGTGCGAATTTCTCTCCATTGTTGATATGGAC
TGCCTGGCAGCTCAAGGGCACGTCTTAACCAAGCTCAGCAAAGAAAACACTAGACCTTCTGCCACTTA
AACTAATCCATTCCACTCAGTATTCCAGCAGACGCTCAGCGACAATCAGGCCCTGAGTTGAACGCACC
ATTTGTCAAAGAAGCCTTTGAAGAGACCCAAAGAACACAGAGAGTGTGGTCAAGGAGAGCCAGAAG
TACACATTTACAATAGACAGATGCGCAAAGACCTTTTGTAGCCAAACAAGTTGGAACGAACTTTTCGG
CGAATGAGCCACTGTCTGCTGTGCAATCTATTCTTAAGAGGCCTTCATCTGCCGTCACCTCACGTCTC
TACG

ACGCGTACGCGGCCGCTCGAG - GFP Tag - GTTTAA



[View online »](#)

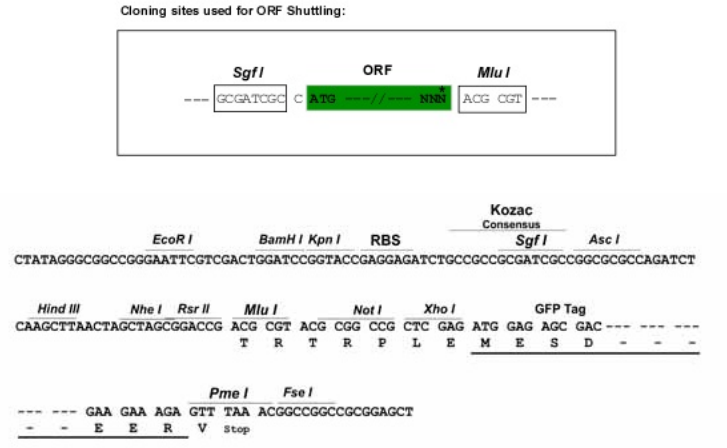
Protein Sequence: >MG204805 representing BC027669
 Red=Cloning site Green=Tags(s)

MRKRRAFADKELENIMLEREYKEREMLETSQAAALFLPNRMVPGPEYSSYKGTYSPTAGELPSKDFCNFL
 PTCLDLTMQYSGSGNMELISSNVSVATTYRQYPLSSRFLVWPKCGPISDTLLYQQYLLNATTSVQALKPG
 TGWDLKGTTRVQDGLSAEQDMMPPKLEGLVLPHLPEVPASRTDLQVHQVVPERSAF SPPGRNFSPIVDM
 CLAAQGHVLTKLKENTRPSLPLKTNPFHSVFQQTLSKSGPELNAPFVKEAFEETPKKHRECLVKESQK
 YFTTIDRCAKDLFVAKQVGTKLSANEPLSFSVESILKRPSSAVTHVSQ

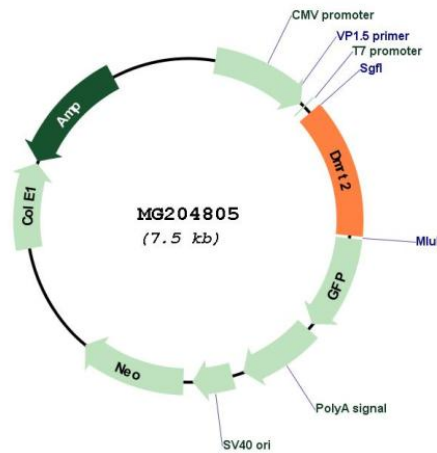
TRTRPLE - GFP Tag - V

Restriction Sites: SgfI-MluI

Cloning Scheme:



Plasmid Map:



ACCN: BC027669

ORF Size: 986 bp

OTI Disclaimer:	The molecular sequence of this clone aligns with the gene accession number as a point of reference only. However, individual transcript sequences of the same gene can differ through naturally occurring variations (e.g. polymorphisms), each with its own valid existence. This clone is substantially in agreement with the reference, but a complete review of all prevailing variants is recommended prior to use. More info
OTI Annotation:	This clone was engineered to express the complete ORF with an expression tag. Expression varies depending on the nature of the gene.
Components:	The ORF clone is ion-exchange column purified and shipped in a 2D barcoded Matrix tube containing 10ug of transfection-ready, dried plasmid DNA (reconstitute with 100 ul of water).
Reconstitution Method:	<ol style="list-style-type: none">1. Centrifuge at 5,000xg for 5min.2. Carefully open the tube and add 100ul of sterile water to dissolve the DNA.3. Close the tube and incubate for 10 minutes at room temperature.4. Briefly vortex the tube and then do a quick spin (less than 5000xg) to concentrate the liquid at the bottom.5. Store the suspended plasmid at -20°C. The DNA is stable for at least one year from date of shipping when stored at -20°C.
RefSeq:	BC027669 , AAH27669
RefSeq Size:	1304 bp
RefSeq ORF:	986 bp
Locus ID:	226049
Cytogenetics:	19 C1
Gene Summary:	Transcriptional activator that directly regulates early activation of the myogenic determination gene MYF5 by binding in a sequence-specific manner to the early epaxial enhancer element of it. Involved in somitogenesis during embryogenesis and somite development and differentiation into sclerotome and dermomyotome. Required for the initiation and/or maintenance of proper organization of the sclerotome, dermomyotome and myotome. Is not required for sex determination and/or differentiation in embryonic development. Also not involved in symmetric somite formation and hence does not regulate the laterality pathway that controls left-right asymmetric organ positioning.[UniProtKB/Swiss-Prot Function]