

Product datasheet for **MG204782**

Fbl (BC003813) Mouse Tagged ORF Clone

Product data:

Product Type:	Expression Plasmids
Product Name:	Fbl (BC003813) Mouse Tagged ORF Clone
Tag:	TurboGFP
Symbol:	Fbl
Synonyms:	FIB, FLRN, RNU3IP1
Mammalian Cell Selection:	Neomycin
Vector:	pCMV6-AC-GFP (PS100010)
E. coli Selection:	Ampicillin (100 ug/mL)
ORF Nucleotide Sequence:	>MG204782 representing BC003813 Red=Cloning site Blue=ORF Green=Tags(s)

TTTTGTAATACGACTCACTATAGGGCGGCCGGAATTCGTCGACTGGATCCGGTACCGAGGAGATCTGCC
GCC**CGATCGCC**

ATGAAGCCAGGTTTCAGCCCCGTGGGGTGGCTTTGGTGGCAGAGGCGGCTTTGGTGACAGAGGCGGTA
GAGGAGGTGGAAGAGGAGGCCGAGGAGGCTTTGGCGGTGGACGAGGAGGCTTTGGCGGTGGAGGTCGAGG
TCGAGGCGGAGGGGGTGGTGGCTTCAGGGGACGAGGAGGTGGCGGTGGCCGAGGTGGGGCTTCCAGTCT
GGGGCAACCGGGTTCGAGGTGGTGGCCGGGAGGCAAGAGAGAAACCAGTCAGGGAAGAATGTGATGG
TGGAGCCGCATCGTCATGAAGGTGTCTTATCTGTGCGGAAAGGAGGATGCCCTTGTCACAAAGAATCT
GGTCCCTGGAGAGTCTGTGTATGGAGAGAAGAGAGTCTCTATTTTCAGAAGGAGATGACAAAATTGAGTAC
AGAGCCTGGAACCCCTTCGCTCCAAGCTGGCAGCAGCTATCCTGGGCGGCTAGACCAGATCCACATCA
AGCCAGGAGCCAAGGTGCTCTACCTTGGGGCAGCCTCAGGCACCACCGTCTCCCACGTCTCTGATATTGT
CGGCCCGGATGGTCTGGTCTACGCAGTTGAGTTCTCCACCGCTCTGGCCGTGACCTCATCAACTTGGCC
AAGAAGAGGACTAACATTATTCCTGTAATTGAAGATGCTCGACACCCACACAAATACCGCATGCTTATCG
CAATGGTGGATGTCATCTTTGCCGATGTGGCCAGCCAGACCAACCCGAATTGTGGCCCTGAACGCCCA
CACCTTCTGCGAATGGAGGACACTTTGTGATTTCCATTAAGGCCAACTGCATTGACTCCACTGCGTCA
GCAGAGGCTGTGTTTGCATCTGAAGTGAAGAAGATGCAGCAGGAGAACATGAAGCCGAGGAGCAGCTGA
CGTAGAGCCTTATGAGCGAGACCACGCCGTGGTTGTGCGGTGTGTACAGGCCACCTCCCAAGGTGAAGAA
C

ACGCGTACGCGGCCGCTCGAG - GFP Tag - GTTTAA



[View online »](#)

Protein Sequence: >MG204782 representing BC003813
 Red=Cloning site Green=Tags(s)

MKPGFSPRGGGF GGRGGF GDRGGRGGGRGGGF GGGRGGF GGGGRGGGGGGFRGRGGGGGRGGGFQS
 GGNRGRGGGRGGKRGNGSGKNMVEPHRHEGVFICRGKEDALVTKNLVPGESVYGEKRVSI SEGDDKIEY
 RAWNPFRSKLAAILGGVDQIHIKPGAKVLYLGAASGTTVSHVSDIVGPDGLVYAVEFSHRSGRDLINLA
 KKRTNIIPVIEDARHPHKYRMLIAMVDVIFADVAQPDQTRIVALNAHTFLRNGGHFVISIKANCIDSTAS
 AEAVFASEVKKMQENMKPQEQLTLEPYERDHAVVVGVYRPPPKVKN

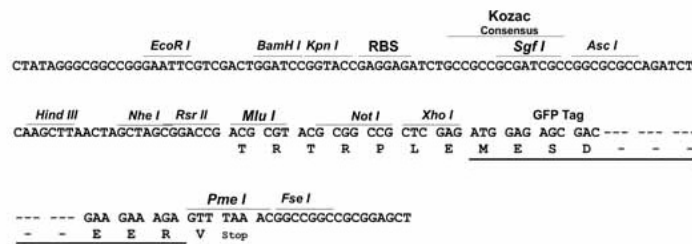
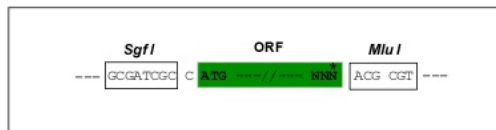
TRTRPLE - GFP Tag - V

Chromatograms: https://cdn.origene.com/chromatograms/ja3088_e08.zip

Restriction Sites: SgfI-MluI

Cloning Scheme:

Cloning sites used for ORF Shuttling:



ACCN: BC003813

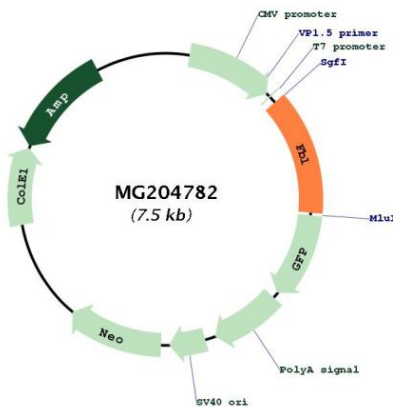
ORF Size: 981 bp

OTI Disclaimer: Due to the inherent nature of this plasmid, standard methods to replicate additional amounts of DNA in E. coli are highly likely to result in mutations and/or rearrangements. Therefore, OriGene does not guarantee the capability to replicate this plasmid DNA. Additional amounts of DNA can be purchased from OriGene with batch-specific, full-sequence verification at a reduced cost. Please contact our customer care team at custsupport@origene.com or by calling 301.340.3188 option 3 for pricing and delivery.

The molecular sequence of this clone aligns with the gene accession number as a point of reference only. However, individual transcript sequences of the same gene can differ through naturally occurring variations (e.g. polymorphisms), each with its own valid existence. This clone is substantially in agreement with the reference, but a complete review of all prevailing variants is recommended prior to use. [More info](#)

OTI Annotation:	This clone was engineered to express the complete ORF with an expression tag. Expression varies depending on the nature of the gene.
Components:	The ORF clone is ion-exchange column purified and shipped in a 2D barcoded Matrix tube containing 10ug of transfection-ready, dried plasmid DNA (reconstitute with 100 ul of water).
Reconstitution Method:	<ol style="list-style-type: none"> 1. Centrifuge at 5,000xg for 5min. 2. Carefully open the tube and add 100ul of sterile water to dissolve the DNA. 3. Close the tube and incubate for 10 minutes at room temperature. 4. Briefly vortex the tube and then do a quick spin (less than 5000xg) to concentrate the liquid at the bottom. 5. Store the suspended plasmid at -20°C. The DNA is stable for at least one year from date of shipping when stored at -20°C.
RefSeq:	BC003813 , AAH03813
RefSeq Size:	1200 bp
RefSeq ORF:	983 bp
Locus ID:	14113
Cytogenetics:	7 A3
Gene Summary:	S-adenosyl-L-methionine-dependent methyltransferase that has the ability to methylate both RNAs and proteins. Involved in pre-rRNA processing by catalyzing the site-specific 2'-hydroxyl methylation of ribose moieties in pre-ribosomal RNA. Site specificity is provided by a guide RNA that base pairs with the substrate. Methylation occurs at a characteristic distance from the sequence involved in base pairing with the guide RNA. Also acts as a protein methyltransferase by mediating methylation of 'Gln-105' of histone H2A (H2AQ104me), a modification that impairs binding of the FACT complex and is specifically present at 35S ribosomal DNA locus (By similarity).[UniProtKB/Swiss-Prot Function]

Product images:



Circular map for MG204782