

Product datasheet for **MG204776**

Mpped1 (NM_172610) Mouse Tagged ORF Clone

Product data:

Product Type: Expression Plasmids
Product Name: Mpped1 (NM_172610) Mouse Tagged ORF Clone
Tag: TurboGFP
Symbol: Mpped1
Synonyms: 6230403M19; AW456965; D15Bwg0669e
Mammalian Cell Selection: Neomycin
Vector: pCMV6-AC-GFP (PS100010)
E. coli Selection: Ampicillin (100 ug/mL)
ORF Nucleotide Sequence: >MG204776 representing NM_172610
Red=Cloning site Blue=ORF Green=Tags(s)

TTTTGTAATACGACTCACTATAGGGCGGCCGGAATTCGTCGACTGGATCCGGTACCGAGGAGATCTGCC
GCC**CGATCGCC**

ATGTGGCGCCCTAGGTGGGATCCTGGCATCCTGAAGGCTGAAGCCCTGGCCCTGCTCCCCTGTGGCCTGG
GCATGGCGTTCTCTCAGTCTCACGTGATGGCCTCTCGACGGCACCAACATGGCCGACTCATCATCGAGGT
GGACGAATACAGTCCAATCCCACCCAGGCCTCACCTTCTACAATATCAACCAGGGCCGCTTCCAGCCA
CCTCACGTGCAGATGGTGGACCCAGTGCCTCACGATGCCCCAAAGCCACCTGGCTACACACGTTTTGTCT
GTGTTTCTGACACTCACTCAAGGACAGATCCCATTCAAATGCCCTACGGCGATGTGCTGATCCACGCTGG
GGACTTCACGGAAGTGGGCTCCCAAGCGAGGTGAAGAAGTTCAATGAATGGCTGGGAGCCTGCCCTAT
GAGTACAAGATCGTGATTGCGGGCAACCACGAGCTGACCTTCGACCAGGAGTTTATGGCCGACCTCATCA
AGCAGGACTTTTATTATTTCCCGTCCGTGTCGAAGCTGAAGCCGGAGAATATGAGAACGTGCAGTCTCT
GCTGACCAACTGCATCTACCTGCAGGACTCAGAGGTACGGTGCCTGGCTTCCGGATCTACGGCTCCCCG
TGGCAGCCCTGGTTCTATGGCTGGGATTCAACCTCCCGAGAGGCCAAGCGCTCCTGGAGAAGTGGAAATC
TCATCCCAGAAGGAGTAGACATCCTTAACTCATGGACCACCACTGGGCTTTCTAGACTGGGTCCCCAA
GAAGATGCAGCGTGTGGGCTGTGTGGAGCTGCTCAACACAGTCCAGAGGGGGTCCAGCCACGGCTGCAC
GTCTTTGGCCACATCCATGAAGGATGGCGTCATGGCAGACGGGACCACCACCTATGTGAACCGCTCGG
TGTGCACTGTGAATATCAGCCTGTGAATCCCCCATAGTCATCGACCTGCCACACCCCGGAATCC

AGCGGACCGACGCGTACGCGGCCGCTCGAG - GFP Tag - GTTTAA



[View online »](#)

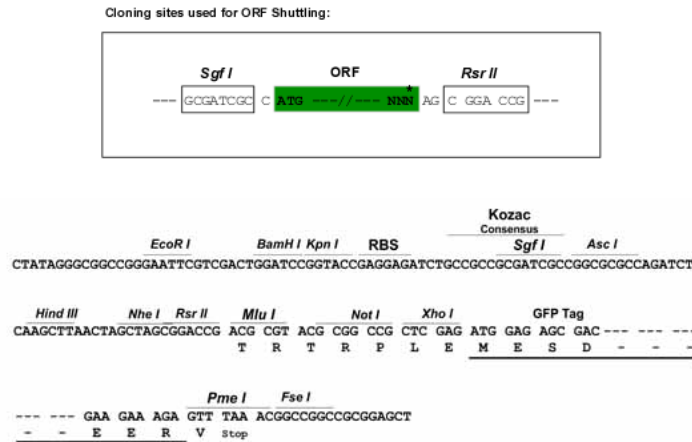
Protein Sequence: >MG204776 representing NM_172610
 Red=Cloning site Green=Tags(s)

MWRPRWDPGILKAEALALLPCGLGMAFSQSHVMASRRHQHGRLIEVDEYSSNPTQAFTFYINIQGRFQP
 PHVQMVDPVPHDAPKPPGYTRFVCVSDTHSRTDPIQMPYGDVLIHAGDFTEGLPSEVKKFNEWLGSLPY
 EYKIVIAGNHELTFDQEFMADLIKQDFYFSPVSKLKPENYENVQSLLTNCIYLQDSEVTVRGFRIYGSP
 WQPWFYGWGFNLPRGQALLEKWNLIPEGVDILITHGPPLGFLDWVPKMQRVGCVELLNTVQRRVQPRHL
 VFGHIHEGYVMADGTTTYVNASVCTVNYQPVNPPIVIDLPTRNS

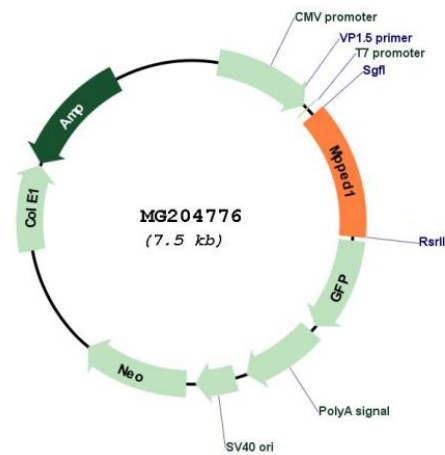
SGPTRRRLE - GFP Tag - V

Restriction Sites: Sgfl-RsrII

Cloning Scheme:



Plasmid Map:



ACCN: NM_172610

ORF Size: 978 bp

OTI Disclaimer:	The molecular sequence of this clone aligns with the gene accession number as a point of reference only. However, individual transcript sequences of the same gene can differ through naturally occurring variations (e.g. polymorphisms), each with its own valid existence. This clone is substantially in agreement with the reference, but a complete review of all prevailing variants is recommended prior to use. More info
OTI Annotation:	This clone was engineered to express the complete ORF with an expression tag. Expression varies depending on the nature of the gene.
Components:	The ORF clone is ion-exchange column purified and shipped in a 2D barcoded Matrix tube containing 10ug of transfection-ready, dried plasmid DNA (reconstitute with 100 ul of water).
Reconstitution Method:	<ol style="list-style-type: none"> 1. Centrifuge at 5,000xg for 5min. 2. Carefully open the tube and add 100ul of sterile water to dissolve the DNA. 3. Close the tube and incubate for 10 minutes at room temperature. 4. Briefly vortex the tube and then do a quick spin (less than 5000xg) to concentrate the liquid at the bottom. 5. Store the suspended plasmid at -20°C. The DNA is stable for at least one year from date of shipping when stored at -20°C.
RefSeq:	NM_172610.3
RefSeq Size:	3256 bp
RefSeq ORF:	981 bp
Locus ID:	223726
UniProt ID:	Q91ZG2
Cytogenetics:	15 39.44 cM
Gene Summary:	May have metallophosphoesterase activity (in vitro).[UniProtKB/Swiss-Prot Function]