

## Product datasheet for **MG204768**

### Rassf2 (NM\_175445) Mouse Tagged ORF Clone

#### Product data:

Product Type:	Expression Plasmids
Product Name:	Rassf2 (NM_175445) Mouse Tagged ORF Clone
Tag:	TurboGFP
Symbol:	Rassf2
Synonyms:	3830431H01Rik; 9030412M04Rik; AI852669; AW495050
Mammalian Cell Selection:	Neomycin
Vector:	pCMV6-AC-GFP (PS100010)
E. coli Selection:	Ampicillin (100 ug/mL)
ORF Nucleotide Sequence:	>MG204768 representing NM_175445 Red=Cloning site Blue=ORF Green=Tags(s)

TTTTGTAATACGACTCACTATAGGGCGGCCGGAATTCGTCGACTGGATCCGGTACCGAGGAGATCTGCC  
GCC**CGATCGCC**

ATGGACTACACTACCAACCTGCCCTAATCCCATGCGGACAAGACAAGTATATGCCCAAGAGTGAACCTC  
TCCTACATCTGAAGACCTACAACCTGTACTATGAAGGTCAAACCTGCAACTCCGACACCGAGAGGAGGA  
AGACGAGTTCATTGTGGAGGGGTACTGAACATCTCTGGGGCTGCGCAGGCCATTTCGGCTGCAGATG  
CAGGATGACCACGAACGCATCCGTCCTCCTCCATCCTCCTCCTCCTGGCACTCCGGCTGTAACCTGGCG  
CACAGGGCACCACACTGAAGCCCTCACCATGCCACTGTTGAGATCTCAGAAGTGGATATGCCAGTTGA  
AGGCCTCGAGACACAGCCCAACAGATTCCAGAGGCCTGAAGCCTGTGCAGGAGGACACCCACAGTTG  
ATGCGCACACGCAGCGATGTTGGGGTGCCTCGCCGTGGCAACGTGAGGACATCCAGTGACCAGCGACGGA  
TCAGACGCCATCGCTTCTCCATCAATGGCCATTCTATAACCACAAGACATCAGTGTTCACACCAGCCTA  
TGGCTCTGTACCAACGTCCGCATCAACAGCACCATGACCACTCCGCAGGTCCTGAAGTTGCTGCTCAAC  
AAGTTAAGATTGAGAACTCGGCAGAGGAGTTTGGCGTGTACGTGGTCCACACCAGCGGTGAAAAGCAGA  
GGCTGAAGAGCTCCGACTACCCTCTGATCGCCGCATCCTCCAGGGCCCTTGTGAACAGATCTCCAAAGT  
TTTCTGATGGAGAAGGACCAGGTGGAGGAGTACCTATGACGTGGCCAGTATATAAAGTTCGAGATG  
CCAGTCTTAAAAGCTTCATTAGAAACTCCAGGAGGAGGAAGACCGGGAGGTGGAGAAGCTGATGCGCA  
AGTACACTGTGCTCCGGTAATGATTCGGCAAAGGCTCGAGGAGATAGCAGAGACCCCGAGACTATC

**ACGCGT**ACGCGGCCGCTCGAG - GFP Tag - GTTTAA



[View online »](#)

**Protein Sequence:** >MG204768 representing NM\_175445  
 Red=Cloning site Green=Tags(s)

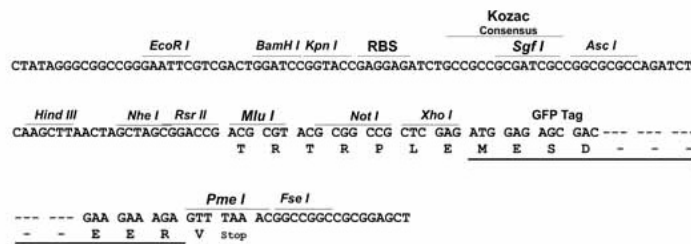
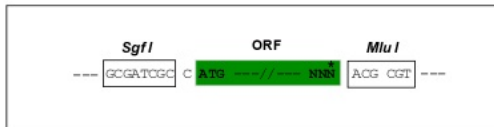
MDYTHQPALIPCGQDKYMPKSELLHLKTYNLYEQNLQLRHREEDEFIVEGLLNI SWGLRRP IRLQM  
 QDDHERIRPPSSSSWHSGCNLGAQGTTLKPLTMPTVQISEVDMPVEGLETHSPTDSRGLKPVQEDTPQL  
 MRTRSDVGVRRRGNVRTSSDQRRIRRRHRSINGHFYNHKTSVFTPAYGSVTNVRINSTMTTPQVLKLLLN  
 KFKIENSAEEFALYVVHTSGEKQRLKSSDYPLIARILQGPCEQISKVFLMEKDQVEEVTYDVAQYIKFEM  
 PVLKSF IQKLQEEEDREVEKLMRKYTVLRLMIRQRLLEEIAETPETI

TRTRPLE - GFP Tag - V

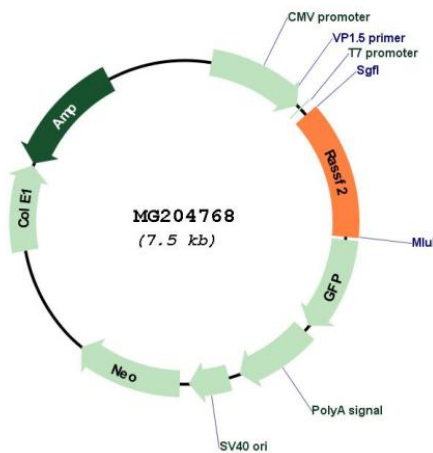
**Restriction Sites:** SgfI-MluI

**Cloning Scheme:**

Cloning sites used for ORF Shuttling:



**Plasmid Map:**



**ACCN:** NM\_175445

**ORF Size:** 978 bp

<b>OTI Disclaimer:</b>	The molecular sequence of this clone aligns with the gene accession number as a point of reference only. However, individual transcript sequences of the same gene can differ through naturally occurring variations (e.g. polymorphisms), each with its own valid existence. This clone is substantially in agreement with the reference, but a complete review of all prevailing variants is recommended prior to use. <a href="#">More info</a>
<b>OTI Annotation:</b>	This clone was engineered to express the complete ORF with an expression tag. Expression varies depending on the nature of the gene.
<b>Components:</b>	The ORF clone is ion-exchange column purified and shipped in a 2D barcoded Matrix tube containing 10ug of transfection-ready, dried plasmid DNA (reconstitute with 100 ul of water).
<b>Reconstitution Method:</b>	<ol style="list-style-type: none"><li>1. Centrifuge at 5,000xg for 5min.</li><li>2. Carefully open the tube and add 100ul of sterile water to dissolve the DNA.</li><li>3. Close the tube and incubate for 10 minutes at room temperature.</li><li>4. Briefly vortex the tube and then do a quick spin (less than 5000xg) to concentrate the liquid at the bottom.</li><li>5. Store the suspended plasmid at -20°C. The DNA is stable for at least one year from date of shipping when stored at -20°C.</li></ol>
<b>RefSeq:</b>	<a href="#">NM_175445.4</a>
<b>RefSeq Size:</b>	4646 bp
<b>RefSeq ORF:</b>	981 bp
<b>Locus ID:</b>	215653
<b>UniProt ID:</b>	<a href="#">Q8BMS9</a>
<b>Cytogenetics:</b>	2 F2
<b>Gene Summary:</b>	Potential tumor suppressor. Acts as a KRAS-specific effector protein. May promote apoptosis and cell cycle arrest. Stabilizes STK3/MST2 by protecting it from proteasomal degradation (By similarity).[UniProtKB/Swiss-Prot Function]