

Product datasheet for **MG204735**

Dbp (NM_016974) Mouse Tagged ORF Clone

Product data:

Product Type: Expression Plasmids
 Product Name: Dbp (NM_016974) Mouse Tagged ORF Clone
 Tag: TurboGFP
 Symbol: Dbp
 Mammalian Cell Selection: Neomycin
 Vector: pCMV6-AC-GFP (PS100010)
 E. coli Selection: Ampicillin (100 ug/mL)
 ORF Nucleotide Sequence: >MG204735 representing NM_016974
 Red=Cloning site Blue=ORF Green=Tags(s)

TTTTGTAATACGACTCACTATAGGGCGGCCGGAATTCGTCGACTGGATCCGGTACCGAGGAGATCTGCC
 GCC**CGATCGCC**

ATGGCGCGCCTCTGAGCGACAGGACCCCGGGCCCCCTGCTGCTGGGTGGCCCGGCTGGGGCCCCCCTG
 GCGGGGAGCGCTGCTTGGGCTGAGGAGCCTTCTGCAGGAAACAGCAAGCCAAAGAACCGCCAGCTG
 TCTCCTGAAGAAAAGGAGCGCAAGGCAACTCTGCCCTCAGCCCCGTCCCGGGACCCGGCCTGAAACG
 GCGGGCCAGCCGATGCCCGAGTGGGGCCGTTAGTGGCGGTGGTCCCCTCGGGGCGCTCAGGGCCTG
 TGGTGGCCCGAGTCTTTTTCGCGCGTGTGTGGGAACGCACTTGCCTTTCGGGGACGTGGAATACGT
 GGACCTGGACGCCTTCTTGTGGAGCACGGGCTACCGCCGAGCCCGCCCGGGGGCCTGTCGCCG
 GCACCCTCTCCAGCGCGCACTCCCGCGCCCTCCCCGGGCGCGGCTCTTGCAGCTCCTCTTCCCCCGCT
 CCTCGCCCGGGCAGCCCCCGCGCGGGCACTCTGGGAGCCGCGGGCCACCGCGCAGGCTTGACATC
 TAGGGACACACCCAGTCTGTGGACCCAGACACCGTGGAGGTGCTAATGACCTTTGAACCTGATCCCGCT
 GATCTCGCCCTGTCAAGCATTCCAGGCCATGAGACTTTTGACCCTCGGAGACACCCTTCTCAGAGGAGG
 AACTGAAGCCTCAACCAATCATGAAGAAGCAAGGAAAGTCCAGGTGCCTGAGGAACAGAAGGATGAGAA
 GTACTGGAGCCGAGGTACAAGAACAATGAAGCAGCCAAGAGGTGAGAGATGCAAGAAGACTCAAGGAG
 AACCAGATATCTGTGCGGGCTGCCTTCTGGAGAAGGAAAACGCCCTGTTGCGGCAGGAGGTGGTGGCTG
 TCGCGCAGGAGCTGTCCCACTACCGTGTGTGCTTTCACGCTACCAGGCCAGCATGGGACACTG

ACGCGTACGCGGCCGCTCGAG - GFP Tag - GTTTAA



[View online »](#)

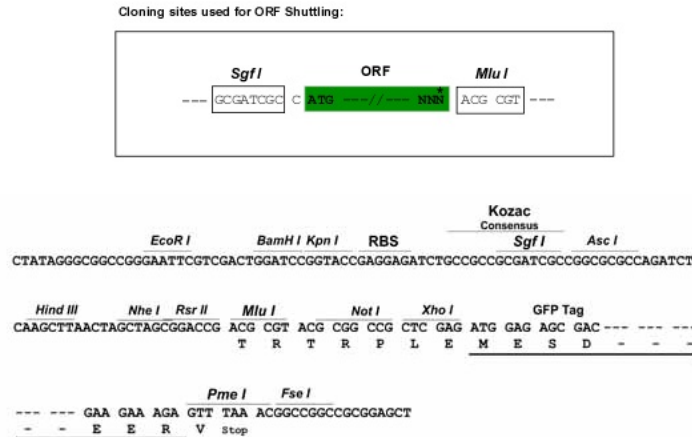
Protein Sequence: >MG204735 representing NM_016974
Red=Cloning site Green=Tags(s)

MARPLSDRTPGPLLLGGPAGAPPGGGALLGLRSLQGNPKPEASCLLKEKERKATLPSAPVPGPGLT
 AGPADAPSGAVSGGGSPRGRSGPVAGPSLFAPLLWERTLPFGDVEYVDLDAFLLEHGLPPSPPPGGLSP
 APSPARTPAPSPGPGSCSSSSPRSSPGHAPARATLGAAGGHRAGLTSRDTPSPVDPDTVEVLMTFEPDPA
 DLALSSIPGHETFDRRHRFSEEELKPQIMKKARKVQVPEEQKDEKYWSRRYKNNEAAKRSRDARRLKE
 NQISVRAAFLEKENALLRQEVVAVRQELSHYRAVL SRYQAQHGTL

TRTRPLE - GFP Tag - V

Restriction Sites: SgfI-MluI

Cloning Scheme:



ACCN: NM_016974

ORF Size: 975 bp

OTI Disclaimer: The molecular sequence of this clone aligns with the gene accession number as a point of reference only. However, individual transcript sequences of the same gene can differ through naturally occurring variations (e.g. polymorphisms), each with its own valid existence. This clone is substantially in agreement with the reference, but a complete review of all prevailing variants is recommended prior to use. [More info](#)

OTI Annotation: This clone was engineered to express the complete ORF with an expression tag. Expression varies depending on the nature of the gene.

Components: The ORF clone is ion-exchange column purified and shipped in a 2D barcoded Matrix tube containing 10ug of transfection-ready, dried plasmid DNA (reconstitute with 100 ul of water).

Reconstitution Method:

1. Centrifuge at 5,000xg for 5min.
2. Carefully open the tube and add 100ul of sterile water to dissolve the DNA.
3. Close the tube and incubate for 10 minutes at room temperature.
4. Briefly vortex the tube and then do a quick spin (less than 5000xg) to concentrate the liquid at the bottom.
5. Store the suspended plasmid at -20°C. The DNA is stable for at least one year from date of shipping when stored at -20°C.

RefSeq: [NM_016974.3](#), [NP_058670.2](#)

RefSeq Size: 1678 bp

RefSeq ORF: 978 bp

Locus ID: 13170

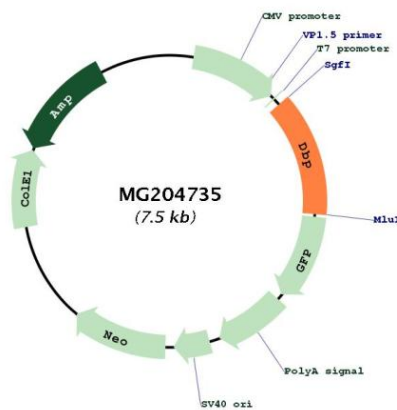
UniProt ID: [Q60925](#)

Cytogenetics: 7 29.45 cM

MW: 34.4 kDa

Gene Summary: The protein encoded by this gene is a member of the Par bZIP transcription factor family and binds to specific sequences in the promoters of several genes, such as albumin, Cyp2a4, and Cyp2a5. The encoded protein can bind DNA as a homo- or heterodimer and is involved in the regulation of some circadian rhythm genes. [provided by RefSeq, Feb 2014]

Product images:



Circular map for MG204735