

## Product datasheet for **MG204721**

### Cyc1 (NM\_025567) Mouse Tagged ORF Clone

#### Product data:

Product Type:	Expression Plasmids
Product Name:	Cyc1 (NM_025567) Mouse Tagged ORF Clone
Tag:	TurboGFP
Symbol:	Cyc1
Synonyms:	2610002H19Rik; AA408921; Cyct1
Mammalian Cell Selection:	Neomycin
Vector:	pCMV6-AC-GFP (PS100010)
E. coli Selection:	Ampicillin (100 ug/mL)
ORF Nucleotide Sequence:	>MG204721 representing NM_025567 Red=Cloning site Blue=ORF Green=Tags(s)

TTTTGTAATACGACTCACTATAGGGCGGCCGGAATTCGTCGACTGGATCCGGTACCGAGGAGATCTGCC  
GCC**CGATCGCC**

ATGGCGGCGGGCGGCTTCGCTTCGCCGGACGGTACTGGGCCCGGGGCGTGGGGCTCCAGGTGCAA  
GTGCTCCGGTCTGTGGGCGGCGCGGTCCCGCAGCTCCATTGCGGACACCGCAGGCAGTGCCTT  
GTCCTCGAAGTCTGGCCCTTCTCGAGGCCGAAAGGTGATGCTGTCAGCGTTGGGCATGCTGGCCGCGGG  
GGTGCAGGGCTAGCTGTGGCCCTCATTCTGCCGTGAGTGCCAGTGACCTGGAGCTGCACCCCCCAGCT  
ACCCATGGTCTCATCGTGGCCTCCTCCTCCTTGGACCACACCAGCATTCCGAGGGGTTCCAGGTATA  
CAAGCAGGTGTGCTTCTCCTGCCACAGCATGGATTATGTGGCGTACCGCCACCTGGTGGGAGTGTGCTAC  
ACGGAGGAAGAAGCCAAGGCGCTGGCTGAGGAGGTGGAGGTCCAGGATGGCCCTAATGATGATGGGAGA  
TGTTTCATGCGGCCAGGAAGTTGTCTGACTATTTTCCAAAACCATACCCTAACCTGAGGCTGCAAGAGC  
TGCTAACAAATGGAGCTTTACCCCTGACCTCAGCTACATCGTTCGAGCTAGGCATGGTGGTGGAGACTAC  
GTATTTCCCTGCTCACTGGCTACTGTGAGCCCCCACTGGGGTGTTCATTGCGAGAAGGCCCTATTTCA  
ACCCTTACTTTCCCGGCCAGGCCATTGGCATGGCTCCTCCCATCTACACAGAAGTCTTGGAGTATGATGA  
TGGACCCCAGCTACCATGTCACAAGTAGCTAAGGATGTCGCCACCTTCTTCGCTGGGCATCAGAACCA  
GAGCATGACCATCGAAAACGCATGGGTCTCAAGATGTTGTTGATGATGGGCCTGCTGCTGCCCTGACCT  
ATGCCATGAAGCGCATAAGTGGTCAGTCTGAAGAGTCGAAAGCTGGCTTATCGCCACCCAAG

**ACGCGT**ACGCGGCCGCTCGAG - GFP Tag - GTTTAA



[View online »](#)

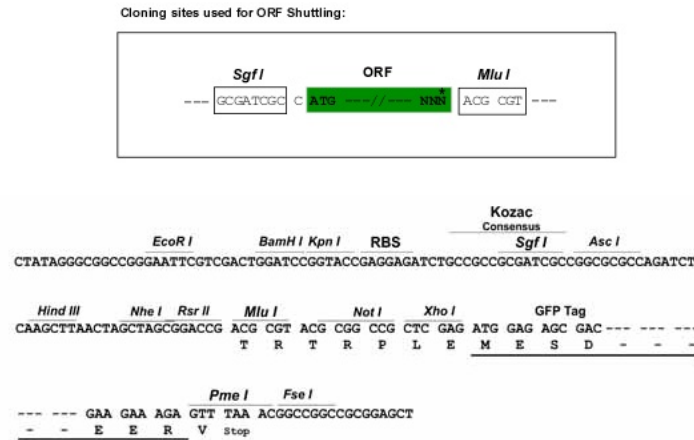
**Protein Sequence:** >MG204721 representing NM\_025567  
 Red=Cloning site Green=Tags(s)

MAAAAASLRRTVLGPRGVGLPGASAPLLGGARSRLPLRTPQAVSLSSKSGPSRGRKVMLSALGMLAAG  
 GAGLAVALHSASDLELHPPSPYWSHRGLLSSLDHTSIRRGFQYKQVCSSCHSMDYVAYRHLVGVCY  
 TEEAKALAAEEVEVDGPNDGEMFMRPGKLSDYFPKYPNPEAARAANNALPPDLSYIVRARHGGEDY  
 VFSLLTGYCEPPTGVSLREGLYFNPFYFGQAIGMAPPIYTEVLEYDDGTPATMSQVAKDVATFLRWASEP  
 EHDHRKRMGLKMLLMMGLLLLPLTYAMKRHKWSVLKSRKLAYRPPK

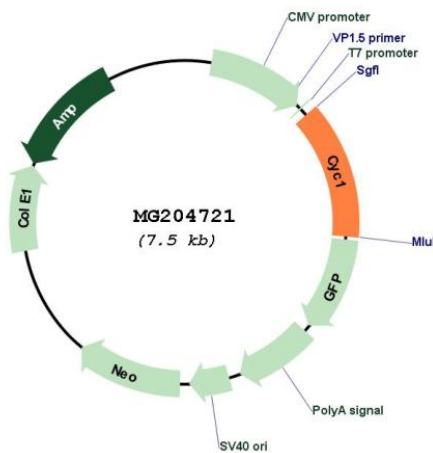
TRTRPLE - GFP Tag - V

**Restriction Sites:** SgfI-MluI

**Cloning Scheme:**



**Plasmid Map:**



**ACCN:** NM\_025567

**ORF Size:** 975 bp

<b>OTI Disclaimer:</b>	The molecular sequence of this clone aligns with the gene accession number as a point of reference only. However, individual transcript sequences of the same gene can differ through naturally occurring variations (e.g. polymorphisms), each with its own valid existence. This clone is substantially in agreement with the reference, but a complete review of all prevailing variants is recommended prior to use. <a href="#">More info</a>
<b>OTI Annotation:</b>	This clone was engineered to express the complete ORF with an expression tag. Expression varies depending on the nature of the gene.
<b>Components:</b>	The ORF clone is ion-exchange column purified and shipped in a 2D barcoded Matrix tube containing 10ug of transfection-ready, dried plasmid DNA (reconstitute with 100 ul of water).
<b>Reconstitution Method:</b>	<ol style="list-style-type: none"><li>1. Centrifuge at 5,000xg for 5min.</li><li>2. Carefully open the tube and add 100ul of sterile water to dissolve the DNA.</li><li>3. Close the tube and incubate for 10 minutes at room temperature.</li><li>4. Briefly vortex the tube and then do a quick spin (less than 5000xg) to concentrate the liquid at the bottom.</li><li>5. Store the suspended plasmid at -20°C. The DNA is stable for at least one year from date of shipping when stored at -20°C.</li></ol>
<b>RefSeq:</b>	<a href="#">NM_025567.3</a>
<b>RefSeq Size:</b>	1194 bp
<b>RefSeq ORF:</b>	978 bp
<b>Locus ID:</b>	66445
<b>UniProt ID:</b>	<a href="#">Q9D0M3</a>
<b>Cytogenetics:</b>	15 D3
<b>Gene Summary:</b>	This is the heme-containing component of the cytochrome b-c1 complex, which accepts electrons from Rieske protein and transfers electrons to cytochrome c in the mitochondrial respiratory chain.[UniProtKB/Swiss-Prot Function]