

Product datasheet for **MG204681**

Mafb (NM_010658) Mouse Tagged ORF Clone

Product data:

Product Type: Expression Plasmids
Product Name: Mafb (NM_010658) Mouse Tagged ORF Clone
Tag: TurboGFP
Symbol: Mafb
Synonyms: kr; Kreisler; Krml; Krml1
Mammalian Cell Selection: Neomycin
Vector: pCMV6-AC-GFP (PS100010)
E. coli Selection: Ampicillin (100 ug/mL)
ORF Nucleotide Sequence: >MG204681 representing NM_010658
 Red=Cloning site Blue=ORF Green=Tags(s)

TTTTGTAATACGACTCACTATAGGGCGGCCGGAATTCGTCGACTGGATCCGGTACCGAGGAGATCTGCC
 GCC**CGATCGCC**

ATGGCCGCGGAGCTGAGCATGGGGCAAGAGCTGCCACCAGCCCGCTGGCCATGGAGTACGTCAACGACT
 TCGACCTTCTCAAGTTCGACGTGAAGAAGGAGCCCTGGGGCGCGGAGCGTCCGGGCCGGCCATGCAC
 ACGCCTGCAGCCTGCTGGCTCGGTGTCGTCCACCCGCTCAGCACTCCGTGCAGTCCGTGCCTTCTTCT
 CCCAGCTTCAGTCCGACTGAACCGAAGACCCATCTCGAGGACCTGTACTGGATGGCGAGCAACTACCAGC
 AGATGAACCCCGAGGCACTCAACCTGACGCCCGAGGACGCGGTGGAGGCGCTCATCGGTTGCACCCAGT
 GCCCAGCCGCTGCAGAGCTTCGACGGCTTCCGTAGTGCACACCACCATACCACCACCACCACCCAT
 CCGCACCACGGGTACCCAGGAGCAGGTGTGACTCACGATGACCTGGGCCAGCACGCTCACCCGACCATC
 ACCATCATCACCAAGCGTCGCCCCCGCCGTCCAGCGCTGCCAGTCCCGCGCAACAGCTACCCACTAGCCA
 CCCGGGGCCGGGACCGCACGCAACAGCCGCGGCGACGGCTGCGGGCGGCAACGGTAGTGTGGAGGACCGC
 TTCTCTGATGACCAGCTGGTGTCCATGTGCGTGCGTGAGCTGAACCGCCACCTGCGGGGCTTACCAAGG
 ACGAGGTGATCCGCTGAAGCAGAAGCGGCGGACCCTGAAGAACCGGGGTACGCCAGTCGTGCAGGTA
 TAAACGCTCCAGCAGAAACATCACCTGGAGAACGAGAAGACGCAGCTCATTAGCAGGTGGAGCAGCTT
 AAGCAGGAGGTGTCCCGCTGGCCGCGAGAGACGCCTACAAGTCAAGTGCAGAACTCGCCAAC
 CCGGCTTCAGGGAGGCGGGCTCCACCAGCGACGCCCTCCTCTCTGAGTTCCTTCTG

AGCGGACCGACGCGTACGCGCCGCTCGAG - GFP Tag - GTTTAA



[View online »](#)

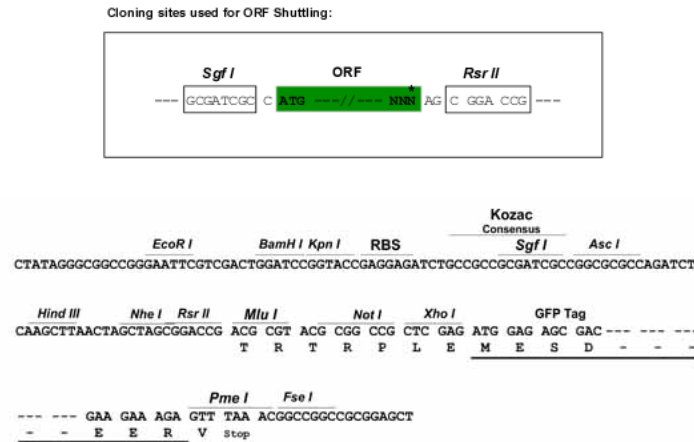
Protein Sequence: >MG204681 representing NM_010658
Red=Cloning site Green=Tags(s)

MAAELSMGQELPTSPLAMEYVNDFDLLKFDVKKEPLGRAERPGRPCTRLQPAGSVSSTPLSTPCSSVPSS
 PSFSPTEPKTHLEDLYWMASNYQQMNPEALNLTPEDAVEALIGSHPVPQPLQSFDFGRSAHHHHHHHHPH
 PHHGYPGAGVTHDDLQQAHPHHHHHHQASPPSSAASPAQQLPTSHPGPGPHATAAATAAGNGSVEDR
 FSDDQLVSMVRELNRHLRGFTKDEVIRLKQKRRTLKNRGYAQSCRYKRVQKHHLENEKTLIQQVEQL
 KQEVSRRLARERDAYKVKCEKLANSGFREAGSTSDSPSSPEFFL

SGPTRRRLE - GFP Tag - V

Restriction Sites: SgfI-RsrII

Cloning Scheme:



ACCN: NM_010658

ORF Size: 969 bp

OTI Disclaimer: The molecular sequence of this clone aligns with the gene accession number as a point of reference only. However, individual transcript sequences of the same gene can differ through naturally occurring variations (e.g. polymorphisms), each with its own valid existence. This clone is substantially in agreement with the reference, but a complete review of all prevailing variants is recommended prior to use. [More info](#)

OTI Annotation: This clone was engineered to express the complete ORF with an expression tag. Expression varies depending on the nature of the gene.

Components: The ORF clone is ion-exchange column purified and shipped in a 2D barcoded Matrix tube containing 10ug of transfection-ready, dried plasmid DNA (reconstitute with 100 ul of water).

Reconstitution Method:

1. Centrifuge at 5,000xg for 5min.
2. Carefully open the tube and add 100ul of sterile water to dissolve the DNA.
3. Close the tube and incubate for 10 minutes at room temperature.
4. Briefly vortex the tube and then do a quick spin (less than 5000xg) to concentrate the liquid at the bottom.
5. Store the suspended plasmid at -20°C. The DNA is stable for at least one year from date of shipping when stored at -20°C.

RefSeq: [NM_010658.3](#), [NP_034788.1](#)

RefSeq Size: 3389 bp

RefSeq ORF: 972 bp

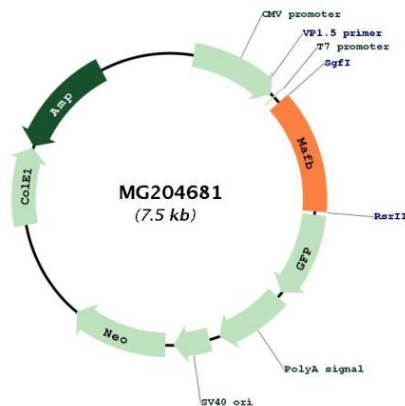
Locus ID: 16658

UniProt ID: [P54841](#)

Cytogenetics: 2 80.92 cM

Gene Summary: Acts as a transcriptional activator or repressor. Plays a pivotal role in regulating lineage-specific hematopoiesis by repressing ETS1-mediated transcription of erythroid-specific genes in myeloid cells. Required for monocytic, macrophage, osteoclast, podocyte and islet beta cell differentiation. Involved in renal tubule survival and F4/80 maturation. Activates the insulin and glucagon promoters. Together with PAX6, transactivates weakly the glucagon gene promoter through the G1 element. SUMO modification controls its transcriptional activity and ability to specify macrophage fate. Binds element G1 on the glucagon promoter. Involved either as an oncogene or as a tumor suppressor, depending on the cell context. [UniProtKB/Swiss-Prot Function]

Product images:



Circular map for MG204681