

Product datasheet for **MG204648**

Parp16 (NM_177460) Mouse Tagged ORF Clone

Product data:

Product Type:	Expression Plasmids
Product Name:	Parp16 (NM_177460) Mouse Tagged ORF Clone
Tag:	TurboGFP
Symbol:	Parp16
Synonyms:	ARTD15; BC055447; C79952; PARP-16
Mammalian Cell Selection:	Neomycin
Vector:	pCMV6-AC-GFP (PS100010)
E. coli Selection:	Ampicillin (100 ug/mL)
ORF Nucleotide Sequence:	>MG204648 representing NM_177460 Red=Cloning site Blue=ORF Green=Tags(s)

TTTTGTAATACGACTCACTATAGGGCGGCCGGAATTCGTCGACTGGATCCGGTACCGAGGAGATCTGCC
GCC**CGATCGCC**

ATGCAGCTCTCCAACAGGGCAGCAGCCAGGGAGGCAGCGAGCCGCGACGTGCTGGCTGCGGACCTCCGCT
GCAGCCTCTTCGCCTCGGCGCTGCAGAGCTACAAGCGGGACTCGGTGCTGCGGCCCTCCCCGCCTCCTA
CGCCCGCCACGACTGTAAGGACTTCGAGGCCCTGCTTGCAGACTGGCAGGTTACCAACTTGAAGGAA
CTTCTACAGTCTCCAGAGACACAGACAAACAGGCCTGGGACCTGGTGAGCTGGATTTTATCCTCCAAGA
TCCTGACAATCCACAGTGCCAAGAAGGCAGAGTTTGAAGATCCAGCAGCTGACCGCGCCCTCACAC
ACCTGTCCCACCCGGATTTCTATTTGAAATTGAGTACTTTGACCCGCGCAACTCCAGATTTTATGAG
ACCAAAGGAGAACGAGACCTAATCTATGCCTTCCATGGTAGCCGCTAGAGAACTTCCACTCCATCATT
ACAATGGCCTGCACTGCCACCTGAACAAGACTTCTCTGTTGGAGAGGGGACCTACCTCACAAGTGACTT
GAGCCTGGCCCTCATTTATAGTCCTCATGGCCACGGGTGGCAACATAGCCTTCTTGGCCCGATCCTGAGC
TGCGTAGCTGTGTGTGAGGTGATCGATCATCCAGATGTCAAGTGCCAAATCAAGAAGAAGGATCCAAGG
AAATAGACCGCAGCCGAGCAAGAATCAAGCACAGCGAGGGGGAGAGATCCCCCTAAGTACTTTGTAGT
CACCAATAACAGCTTCTGCGGGTGAAGTACCTGCTGGTGTATCCAGAAAGCAGCCCAAGAGGGCCTCG
AGCCAGCTCTCCTGGTTGTCAGCCACTGGTTCGTGATCATGATGCCCTGTATCTGCTGCTGCTGCTCA
TCGTGAGTGTACCAACTCCTCTGCGTTCACCACTTCTGGAATCGTGTGAAGAGA

ACGCGTACGCGGCCGCTCGAG - GFP Tag - GTTTAA



[View online »](#)

Protein Sequence: >MG204648 representing NM_177460
 Red=Cloning site Green=Tags(s)

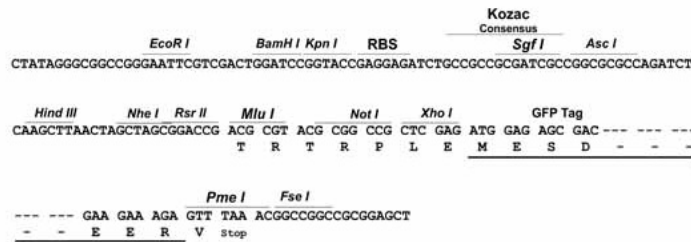
MQLSNRAAAREAASRDVLAADLRCSLFFASALQSYKRDSVLRPFPPASARHDKDFEALLADTGRLPNLKE
 LLQSSRDTDKQAWDLVSWILSSKILTIHSAKKAEFEKIQLTGAPHTPVPTPDFLFEIEYFDPANSRFYE
 TKGERDLIYAFHGSRLNFHFSIIHNLHCHLNKTSLFGEGTYLTDLSLALIYSPHGHGWQHSLLGPILS
 CVAVCEVIDHDPVKCQIKKKDSKEIDRSRARIKHSEGGGEIPPKYFVVTNNQLLRVKYLLVYSQKQPKRAS
 SQLSWLSSHWFVIMMSLYLLLLLIVSVTNSSAFHHFWNRVKR

TRTRPLE - GFP Tag - V

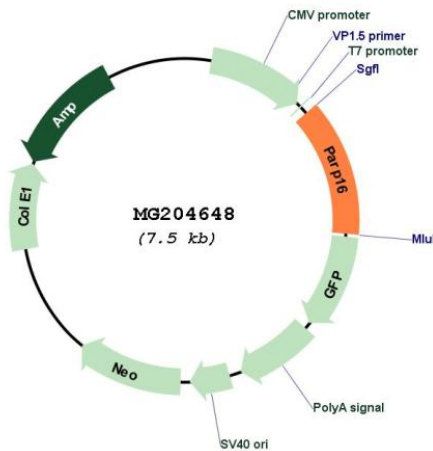
Restriction Sites: SgfI-MluI

Cloning Scheme:

Cloning sites used for ORF Shuttling:



Plasmid Map:



ACCN: NM_177460

ORF Size: 966 bp

OTI Disclaimer:	The molecular sequence of this clone aligns with the gene accession number as a point of reference only. However, individual transcript sequences of the same gene can differ through naturally occurring variations (e.g. polymorphisms), each with its own valid existence. This clone is substantially in agreement with the reference, but a complete review of all prevailing variants is recommended prior to use. More info
OTI Annotation:	This clone was engineered to express the complete ORF with an expression tag. Expression varies depending on the nature of the gene.
Components:	The ORF clone is ion-exchange column purified and shipped in a 2D barcoded Matrix tube containing 10ug of transfection-ready, dried plasmid DNA (reconstitute with 100 ul of water).
Reconstitution Method:	<ol style="list-style-type: none">1. Centrifuge at 5,000xg for 5min.2. Carefully open the tube and add 100ul of sterile water to dissolve the DNA.3. Close the tube and incubate for 10 minutes at room temperature.4. Briefly vortex the tube and then do a quick spin (less than 5000xg) to concentrate the liquid at the bottom.5. Store the suspended plasmid at -20°C. The DNA is stable for at least one year from date of shipping when stored at -20°C.
RefSeq:	NM_177460.3 , NP_803411.2
RefSeq Size:	2464 bp
RefSeq ORF:	969 bp
Locus ID:	214424
UniProt ID:	Q7TMM8
Cytogenetics:	9 C
Gene Summary:	Intracellular mono-ADP-ribosyltransferase that may play a role in different processes through the mono-ADP-ribosylation of proteins involved in those processes. May play a role in the unfolded protein response (UPR), by ADP-ribosylating and activating EIF2AK3 and ERN1, two important UPR effectors. May also mediate mono-ADP-ribosylation of karyopherin KPNB1 a nuclear import factor. May not modify proteins on arginine or cysteine residues compared to other mono-ADP-ribosyltransferases.[UniProtKB/Swiss-Prot Function]