

Product datasheet for **MG204641**

Gjd2 (NM_010290) Mouse Tagged ORF Clone

Product data:

Product Type:	Expression Plasmids
Product Name:	Gjd2 (NM_010290) Mouse Tagged ORF Clone
Tag:	TurboGFP
Symbol:	Gjd2
Synonyms:	connexin36; cx36; Gja9
Mammalian Cell Selection:	Neomycin
Vector:	pCMV6-AC-GFP (PS100010)
E. coli Selection:	Ampicillin (100 ug/mL)
ORF Nucleotide Sequence:	>MG204641 representing NM_010290 Red=Cloning site Blue=ORF Green=Tags(s)

TTTTGTAATACGACTCACTATAGGGCGGCCGGAATTCGTCGACTGGATCCGGTACCGAGGAGATCTGCC
GCC**CGATCGCC**

ATGGGGGAATGGACCATCTTGGAGAGGCTGCTGGAAGCCGCGGTGCAGCAGCACTCCACTATGATTGGGA
GGATCCTGTTGACTGTGGTGGTATCTCCGGATACTCATTGTGGCCATTGTAGGGGAGACGGTGTACGA
TGATGAGCAGACCATGTTTGTGTGCAACACCCTACAGCCCGCTGTAACCGGCTGCTATGACCGCGCC
TTCCCATCTCCATATACGTTACTGGTCTTCCAGATCATAATGGTGTGCACCCCACTCTGTTTTA
TCACCTATTCTGTGCACCAATCCGCCAAGCAGCAGAGAACGCCGACTCTACTGTCTTCTAGCCCTGGA
CAGAGACCCTGTGAGTCTATAGGGGACCTGGAGGAACCTGGGGTGGGGCAGCGGAGGAGCAACGA
GAAGATAAGAAGTTGAAAATGCCATTGTCAATGGGGTGTGCAGAACACAGAGACCACCAAGGAGA
CAGAACCAGATTGCTTAGAGGTTAAAGAGCTGACTCCACATCCATCTGGGCTGCGCACAGCAGCAAGGTC
CAAGCTCCGAAGACAGGAAGGTATCTCCCGCTTACATCATCCAAGTGGTGTTCGAAATGCTCTGGAG
ATTGGGTTTCTGGTGGCCAGTACTTTCTATATGGCTTCACTGTTCCAGGGTGTATGAGTGAACCGTT
ACCCCTGCATCAAGGAGGTAGAATGTTATGTGTCTAGACCTACCGAGAAGACAGTCTTTCTGGTGTTCAT
GTTTGTGTGAGCGGCATTTGTGTGGTGTCAATCTGGCTGAACCTAACCATCTGGGATGGCGGAAGATC
AAACTGGCTGTCCGGGAGCCCAGGCCAAGAGGAAGTCAGTCTATGAGATACGTAACAAAGATCTGCCTC
GAGTCAGTGTCCCAATTTCCGGCAGGACTCAGTCCAGTACTCTGCCTATGTG

ACGCGTACGCGGCCGCTCGAG - GFP Tag - GTTTAA



[View online »](#)

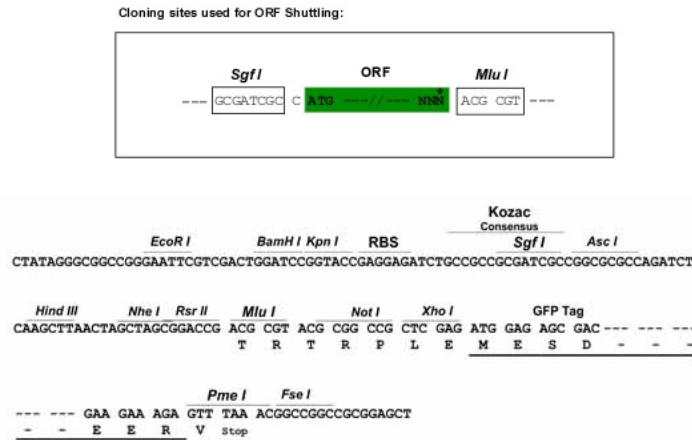
Protein Sequence: >MG204641 representing NM_010290
 Red=Cloning site Green=Tags(s)

MGEWTLERLLEAAVQQHSTMIGRILLTVVVIFRILIVAIVGETVYDDEQTMFVCNTLQPGCNQACYDRA
 FPI SHIRYVWFQIIMVCTPCLCFITYSVHQSAQRERRYSTVFLALDRDPAESIGGPGGTGGGSGGSKR
 EDKKLQNAIVNGVLQNTETTSKETEPDCLVEVKELTPHPSGLRTAARSKLRRQEGISRFYIIQVVF RNALE
 IGFLVGQYFLYGFVSPGLYECNRYPCIKEVECYVSRPTEKTVFLVFMFAVSGICVVLNLAE LNHLGWRKI
 KLA VRGAQAKRKSYYEIRNKDLPRVSVPNFGRTQSSDSAYV

TRTRPLE - GFP Tag - V

Restriction Sites: SgfI-MluI

Cloning Scheme:



ACCN: NM_010290

ORF Size: 963 bp

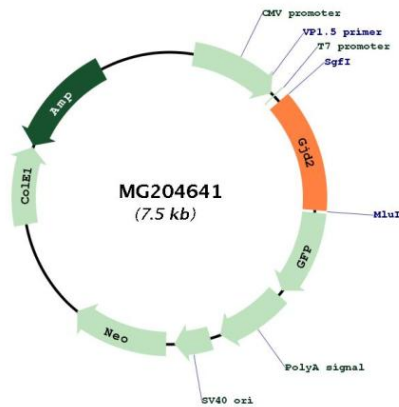
OTI Disclaimer: Due to the inherent nature of this plasmid, standard methods to replicate additional amounts of DNA in E. coli are highly likely to result in mutations and/or rearrangements. Therefore, OriGene does not guarantee the capability to replicate this plasmid DNA. Additional amounts of DNA can be purchased from OriGene with batch-specific, full-sequence verification at a reduced cost. Please contact our customer care team at custsupport@origene.com or by calling 301.340.3188 option 3 for pricing and delivery.

The molecular sequence of this clone aligns with the gene accession number as a point of reference only. However, individual transcript sequences of the same gene can differ through naturally occurring variations (e.g. polymorphisms), each with its own valid existence. This clone is substantially in agreement with the reference, but a complete review of all prevailing variants is recommended prior to use. [More info](#)

OTI Annotation: This clone was engineered to express the complete ORF with an expression tag. Expression varies depending on the nature of the gene.

- Components:** The ORF clone is ion-exchange column purified and shipped in a 2D barcoded Matrix tube containing 10ug of transfection-ready, dried plasmid DNA (reconstitute with 100 ul of water).
- Reconstitution Method:**
1. Centrifuge at 5,000xg for 5min.
 2. Carefully open the tube and add 100ul of sterile water to dissolve the DNA.
 3. Close the tube and incubate for 10 minutes at room temperature.
 4. Briefly vortex the tube and then do a quick spin (less than 5000xg) to concentrate the liquid at the bottom.
 5. Store the suspended plasmid at -20°C. The DNA is stable for at least one year from date of shipping when stored at -20°C.
- RefSeq:** [NM_010290.2](#), [NP_034420.2](#)
- RefSeq Size:** 2907 bp
- RefSeq ORF:** 966 bp
- Locus ID:** 14617
- UniProt ID:** [O54851](#)
- Cytogenetics:** 2 E4
- Gene Summary:** One gap junction consists of a cluster of closely packed pairs of transmembrane channels, the connexons, through which materials of low MW diffuse from one cell to a neighboring cell.[UniProtKB/Swiss-Prot Function]

Product images:



Circular map for MG204641