

Product datasheet for **MG204638**

Tsta3 (NM_031201) Mouse Tagged ORF Clone

Product data:

Product Type: Expression Plasmids
Product Name: Tsta3 (NM_031201) Mouse Tagged ORF Clone
Tag: TurboGFP
Symbol: Tsta3
Synonyms: A1256181; FX; Tstap35b
Mammalian Cell Selection: Neomycin
Vector: pCMV6-AC-GFP (PS100010)
E. coli Selection: Ampicillin (100 ug/mL)
ORF Nucleotide Sequence: >MG204638 representing NM_031201
Red=Cloning site Blue=ORF Green=Tags(s)

TTTTGTAATACGACTCACTATAGGGCGGCCGGAATTCGTCGACTGGATCCGGTACCGAGGAGATCTGCC
GCC**CGATCGCC**

ATGGGCGAACCCCATGGATCCATGAGGATCCTAGTGACAGGGGGCTCTGGACTGGTGGGTAGAGCCATCC
AGAAGGTGGTTGCAGATGGGGCCGGCTTACCTGGAGAGGAATGGGTGTTGTCTCCTCAAAGATGCAGA
TCTGACGGATGCAGCCAAACCAAGCACTTCCAGAAAGTACAGCCACCCACGTCATCCATCTCGCT
GCAATGGTAGGCGGCCTTTCCGGAATATCAAATAACAACCTGGATTTCTGGCGGAAAAACGTGCACATCA
ATGACAACGTCTGCATTCGGCCTTCGAGGTGGGCGCTCGCAAGTGGTCTCCTGCCTGTCCACCTGCAT
CTTCCCTGACAAGACCACCTATCCTATTGACGAGACAATGATCCACAACGGCCGCTCACAGCAGCAAT
TTCGGGTACTCATACGCCAAGAGGATGATTGACGTGCAGAACAGAGCCTACTTCCAGCAGCACGGTGT
CCTTACC CGCCTCATCCCTACCAATGTCTTTGGGCCTTATGACAACTTCAACATCGAAGATGGCCACGT
GCTACCCGGCCTCATCCATAAGGTGCACCTGGCCAAGAGTAGTGACTCGGCCCTGACGGTGTGGGTACA
GGGAAGCCGCGGAGGCAGTTCATCTACTCACTGGACCTCGCCCGCTCTCATCTGGTCTACGGGAGT
ACAGTGAGGTGGAGCCCATCCTCTCAGTGGGTGAGGAAGTGAAGTGCCATCAAGGAGGCAGCTGA
GGCTGTAGTGGAGCCATGGACTTCAATGGGGAAGTCACTTTTGATTCAACAAAGTCAGATGGGCAATAT
AAGAAGACAGCCAGCAATGGCAAGTTGCGGTCTACTTGCCCGACTTCCGTTTCACACCCCTCAAGCAGG
CTGTGAAGGAAACCTGCACCTTGGTTCACCGACAACCTATGAGCAGGCCCGGAAG

ACGCGTACGCGGCCGCTCGAG - GFP Tag - GTTTAA



[View online »](#)

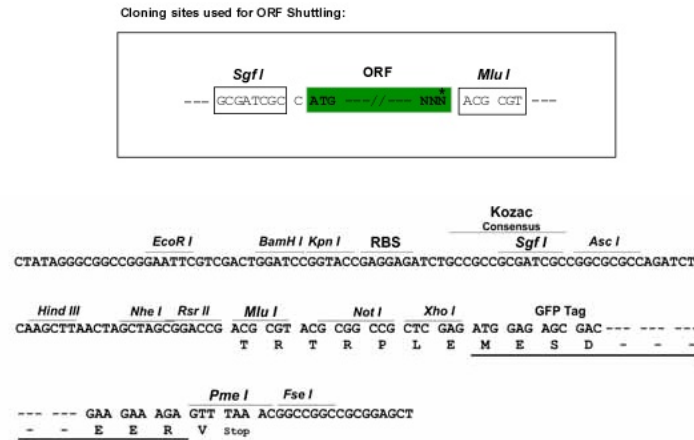
Protein Sequence: >MG204638 representing NM_031201
 Red=Cloning site Green=Tags(s)

MGEPHGSMRILVTGGSLVGRAIQKVVADGAGLPGEWVFVSSKDADLTDAAQQTALFQKVQPTHVIHLA
 AMVGGFLFRNIKYNLDFWRKNVHINDNVLHSAFVVGARKVVSCLSTCIFPKTTYPIDETMIHNGPPHSSN
 FGYSYAKRMIDVQNRAYFQQHGCTFTAVIPTNVFGPYDNFNIEDGHVLPGLIHKVHLAKSSDSALTWWT
 GKPRRQFIYSLDLARLFIWVLEIYSEVEPIILSVGEEDEVSIKEAAEAVVEAMDFNGEVTFDSTKSDGQY
 KKTASNGKLRSYLPDFRFTPFKQAVKETCTWFTDNYEQARK

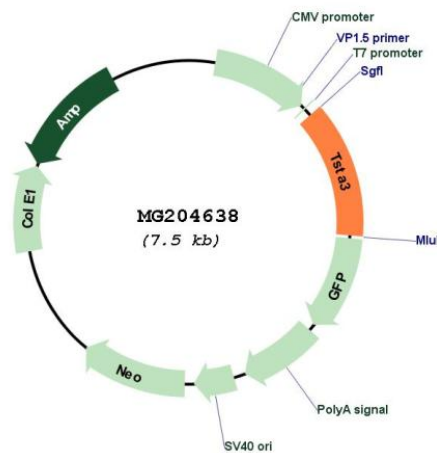
TRTRPLE - GFP Tag - V

Restriction Sites: SgfI-MluI

Cloning Scheme:



Plasmid Map:



ACCN: NM_031201

ORF Size: 963 bp

OTI Disclaimer:	The molecular sequence of this clone aligns with the gene accession number as a point of reference only. However, individual transcript sequences of the same gene can differ through naturally occurring variations (e.g. polymorphisms), each with its own valid existence. This clone is substantially in agreement with the reference, but a complete review of all prevailing variants is recommended prior to use. More info
OTI Annotation:	This clone was engineered to express the complete ORF with an expression tag. Expression varies depending on the nature of the gene.
Components:	The ORF clone is ion-exchange column purified and shipped in a 2D barcoded Matrix tube containing 10ug of transfection-ready, dried plasmid DNA (reconstitute with 100 ul of water).
Reconstitution Method:	<ol style="list-style-type: none">1. Centrifuge at 5,000xg for 5min.2. Carefully open the tube and add 100ul of sterile water to dissolve the DNA.3. Close the tube and incubate for 10 minutes at room temperature.4. Briefly vortex the tube and then do a quick spin (less than 5000xg) to concentrate the liquid at the bottom.5. Store the suspended plasmid at -20°C. The DNA is stable for at least one year from date of shipping when stored at -20°C.
RefSeq:	NM_031201.1 , NP_112478.1
RefSeq Size:	1329 bp
RefSeq ORF:	966 bp
Locus ID:	22122
UniProt ID:	P23591
Cytogenetics:	15 35.1 cM
Gene Summary:	Catalyzes the two-step NADP-dependent conversion of GDP-4-dehydro-6-deoxy-D-mannose to GDP-fucose, involving an epimerase and a reductase reaction.[UniProtKB/Swiss-Prot Function]