

Product datasheet for **MG204611**

Cryl1 (NM_030004) Mouse Tagged ORF Clone

Product data:

| | |
|---------------------------|---|
| Product Type: | Expression Plasmids |
| Product Name: | Cryl1 (NM_030004) Mouse Tagged ORF Clone |
| Tag: | TurboGFP |
| Symbol: | Cryl1 |
| Synonyms: | 1110025H08Rik; A230106J09Rik; C85932; gul3dh |
| Mammalian Cell Selection: | Neomycin |
| Vector: | pCMV6-AC-GFP (PS100010) |
| E. coli Selection: | Ampicillin (100 ug/mL) |
| ORF Nucleotide Sequence: | >MG204611 representing NM_030004 Red=Cloning site Blue=ORF Green=Tags(s) |

TTTTGTAATACGACTCACTATAGGGCGGCCGGAATTCGTCGACTGGATCCGGTACCGAGGAGATCTGCC
GCC**CGATCGCC**

ATGGCGTCCCCAGCAGCGGGCGGGTGGTATCGTAGGCAGTGGGCTCATTGGTCGGAGCTGGGCTATGC
TGTTTGCAGTGGAGGCTTCAAGGTGAACTCTATGACATTGAGCAACAGCAGATAACAGACGCCCTGGA
AAATATCAGGAAGGAGATGAAATCCCTGGAGCAGTCTGGTTCTCTCAAAGGCTCCTTGAGCGCAGAGCGG
CAGCTGTCTCTCATCAGTGGCTGTGGCAACCTGGCCGAAGCAGTAGAGGGCGCTGTGCACATTCAGGAGT
GTGTTCCAGAGAACCTAGAACTGAAAAAGAAGATCTTTGCCAGCTGGACCGCATTGTGGATGACCGGT
TATCCTAAGCAGCTCCAGCTCTTGTCTGCTGCCTTCCAAGCTGTTCTCGGGCTTGCTCATGTGAAGCAG
TGCAATTGTGGCTCATCCTGTCAATCCACCATATTATGTCCCCCTGGTTGAGCTAGTGCCCCACCCAGAGA
CAGCTCCAGCCACAATGGACAGAACCTATGCCTTGATGAAGAAGATTGGGCAGTCCCCAGTGAGAGTCTT
GAAGGAGATTGACGGCTTCGTCTGAACCGTCTGCAGTACGCCGTCATCAGTGAGGCTGGAGACTGGTG
GAGGAAGAAATAGTATCTCCTAGCGACCTGGACCTGGTCATGTGACAGCGGCTGGGCATGCGGTACGCGT
TCATCGGACCCTTGAGACTATGCACCTCAATGCTGAAGGTGTGATTAGCTACTGTGAGAGATACAGTGA
AGGGATGAAGCACGTCTCAGTACTTTCGGGCCGTCCAGAGTTCTCAGGGGCCACGGTGGAGAGAGTT
AGTGAGGACATGTGCATGAAGGTTCTGATGATCCGGAGCACTTAGCTGCCAGGAGCAGTGAGGGGACG
ACTGCCTCATGAAGCTCTCCATACTGAAGTACCAGATGCAGCCCAAG

AGCGGACCGACGCGTACGCGGCCGCTCGAG - GFP Tag - GTTTAA



[View online »](#)

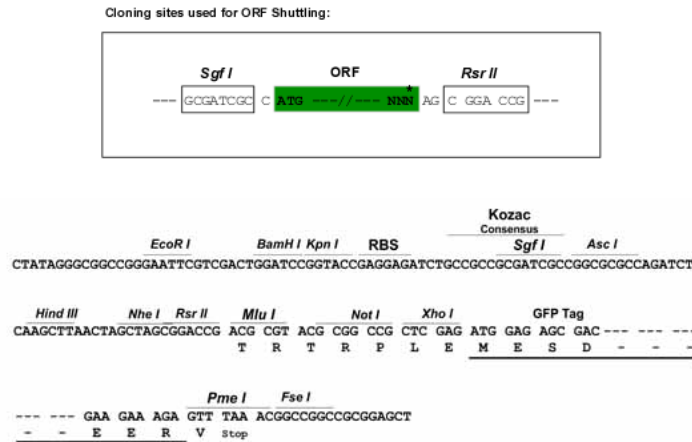
Protein Sequence: >MG204611 representing NM_030004
 Red=Cloning site Green=Tags(s)

MASPAAGGVVIVGSLIGRSWAMLFASGGFKVKLYDIEQQQITDALENIRKEMKSLEQSGSLKGSLSAER
 QLSLISGCGNLAEAVEGAVHIQECVPENLELKKKIFAQLDRIVDDRVLSSSSCLLPSKLFSGLAHVKQ
 CIVAHPVNPYYVPLVELVPHPETAPATMDRTYALMKKIGQSPVRVLKEIDGFVLNRLQYAVISEAWRLV
 EEEIVSPSDLDLVMSDGLGMRYAFIGPLETMHLNAEGVISYCERYSEGMKHVLSTFGPVPPEFSGATVERV
 SEDMCMKVPDDPEHLAARRQWRDDCLMKLSILKYQMCPK

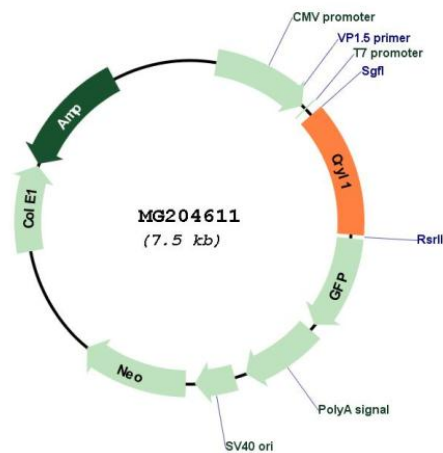
SGPTRTRRLE - GFP Tag - V

Restriction Sites: SgfI-RsrII

Cloning Scheme:



Plasmid Map:



ACCN: NM_030004

ORF Size: 957 bp

| | |
|-------------------------------|---|
| OTI Disclaimer: | The molecular sequence of this clone aligns with the gene accession number as a point of reference only. However, individual transcript sequences of the same gene can differ through naturally occurring variations (e.g. polymorphisms), each with its own valid existence. This clone is substantially in agreement with the reference, but a complete review of all prevailing variants is recommended prior to use. More info |
| OTI Annotation: | This clone was engineered to express the complete ORF with an expression tag. Expression varies depending on the nature of the gene. |
| Components: | The ORF clone is ion-exchange column purified and shipped in a 2D barcoded Matrix tube containing 10ug of transfection-ready, dried plasmid DNA (reconstitute with 100 ul of water). |
| Reconstitution Method: | <ol style="list-style-type: none">1. Centrifuge at 5,000xg for 5min.2. Carefully open the tube and add 100ul of sterile water to dissolve the DNA.3. Close the tube and incubate for 10 minutes at room temperature.4. Briefly vortex the tube and then do a quick spin (less than 5000xg) to concentrate the liquid at the bottom.5. Store the suspended plasmid at -20°C. The DNA is stable for at least one year from date of shipping when stored at -20°C. |
| RefSeq: | NM_030004.2 |
| RefSeq Size: | 1410 bp |
| RefSeq ORF: | 960 bp |
| Locus ID: | 68631 |
| UniProt ID: | Q99KP3 |
| Cytogenetics: | 14 30.1 cM |