

Product datasheet for **MG204562**

Arbp (BC011106) Mouse Tagged ORF Clone

Product data:

Product Type:	Expression Plasmids
Product Name:	Arbp (BC011106) Mouse Tagged ORF Clone
Tag:	TurboGFP
Symbol:	Arbp
Synonyms:	36B4; Arbp; L10E
Mammalian Cell Selection:	Neomycin
Vector:	pCMV6-AC-GFP (PS100010)
E. coli Selection:	Ampicillin (100 ug/mL)
ORF Nucleotide Sequence:	>MG204562 representing BC011106 Red=Cloning site Blue=ORF Green=Tags(s)

TTTTGTAATACGACTCACTATAGGGCGGCCGGAATTCGTCGACTGGATCCGGTACCGAGGAGATCTGCC
GCC**CGATCGCC**

ATGCCAGGGAAGACAGGGCGACCTGGAAGTCCAACACTTCTCAAGATCATCCAACCTTTGGATGATT
ATCCAAAATGCTTCATTGTGGGAGCAGACAACGTGGGCTCCAAGCAGATGCAGCAGATCCGCATGTCCT
CCGAGGGAAGGCCGTGGTGTGATGGGCAAGAACCATTGATGCGCAAGGCCATCAGGGCCACCTGGAG
ACAACCCAGCTCTGGAGAACTGCTGCCTCACATCCGGGGAACGTGGGCTTCGTGTTACCAAGGAGG
ACCTCACTGAGATTCGGGATATGCTGTTGGCCAATAAGGTGCCAGCTGCTGCTCGGGCTGGTCCATCGC
CCCGTGTGAGGTCAGTGTCCAGCTCAGAACACTGGTCTGGGGCCGAGAAGACCTCCTTCTCCAGGCT
TTGGGCATCACCACGAAAATCTCCAGAGGCACCATTGAAATTCTGAGTGTGTGCAGCTGATAAAGACTG
GAGACAAGGTGGGAGCCAGCGAGGCCACACTGCTGAACATGCTGAACATCTCCCCCTTCTCTTCGGGCT
GATCATCCAGCAGGTGTTTGACAACGGCAGCATTATAACCTGAAGTGCTCGACATCACAGAGCAGGCC
CTGCACTCTCGTTTCTGGAGGGTGTCCGCAACGTGGCCAGTGTGTGTCTGCAGATCGGGTACCCAACTG
TTGCCTCGGTGCCACACTCCATCATCAATGGGTACAAGCGCTCCTGGCATTGTCTGTGGAGACTGAGTA
CACCTTCCCACTTGCTGAAAAGGTCAAGGCCTTCTGGCTGATCCATCTGCATTTGGGGCTGCTGCCCT
GCAGCTGCTGCCACCACTGCTGCCCTGCGGCTGCTGCAGCCCTGCCAAAGCTGAAGCAAAGGAAGAGT
CGGAGGAATCAGATGAGGATATGGGATTCGGTCTCTTCGAC

ACGCGTACGCGGCCGCTCGAG - GFP Tag - GTTTAA



[View online »](#)

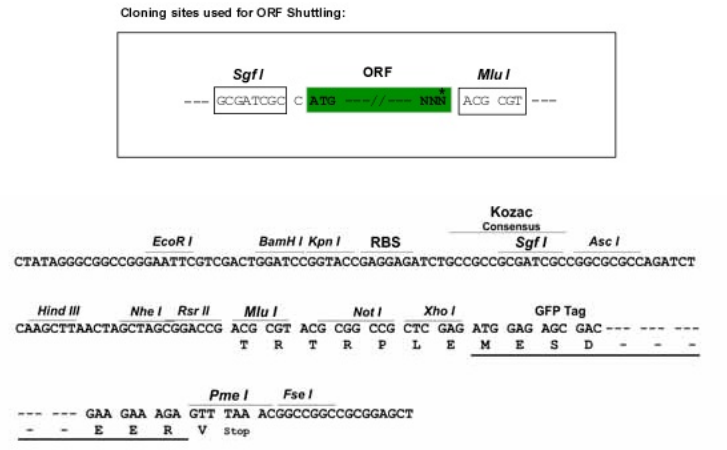
Protein Sequence: >MG204562 representing BC011106
Red=Cloning site Green=Tags(s)

MPREDRATWKSNYFLKIIQLDDYPKCFIVGADNVGSKQMQQIRMSLRGKAVVLMGKNTMMRKAIRGHLE
 NNPALAKLLPHIRGNVGFVFTKEDLTEIRDMLLANKVPAAARAGAIAPCEVTVP AQNTGLGPEKTSFFQA
 LGITTKISRGTIEILSDVQLIKTGDKVGASEATLLNMLNISPFSFGLIIQQVFDNGSIYNPEVLDITEQA
 LHSRFLEGVRNVASVCLQIGYPTVASVPHSIINGYKRVLALSVETEYTFPLAEKVKAFADPSAFAAAAAP
 AAAATTAAPAAAAAPAKAEAKEESESEDEDMGFGFLFD

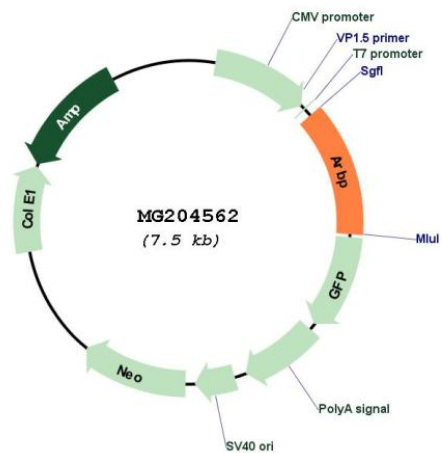
TRTRPLE - GFP Tag - V

Restriction Sites: SgfI-MluI

Cloning Scheme:



Plasmid Map:



ACCN: BC011106

ORF Size: 953 bp

OTI Disclaimer:	The molecular sequence of this clone aligns with the gene accession number as a point of reference only. However, individual transcript sequences of the same gene can differ through naturally occurring variations (e.g. polymorphisms), each with its own valid existence. This clone is substantially in agreement with the reference, but a complete review of all prevailing variants is recommended prior to use. More info
OTI Annotation:	This clone was engineered to express the complete ORF with an expression tag. Expression varies depending on the nature of the gene.
Components:	The ORF clone is ion-exchange column purified and shipped in a 2D barcoded Matrix tube containing 10ug of transfection-ready, dried plasmid DNA (reconstitute with 100 ul of water).
Reconstitution Method:	<ol style="list-style-type: none">1. Centrifuge at 5,000xg for 5min.2. Carefully open the tube and add 100ul of sterile water to dissolve the DNA.3. Close the tube and incubate for 10 minutes at room temperature.4. Briefly vortex the tube and then do a quick spin (less than 5000xg) to concentrate the liquid at the bottom.5. Store the suspended plasmid at -20°C. The DNA is stable for at least one year from date of shipping when stored at -20°C.
RefSeq:	BC011106 , AAH11106
RefSeq Size:	1138 bp
RefSeq ORF:	953 bp
Locus ID:	11837
Cytogenetics:	5 F
Gene Summary:	Ribosomal protein P0 is the functional equivalent of E.coli protein L10.[UniProtKB/Swiss-Prot Function]